



MOUNTVIEW

PROSPECTUS 2019/20

A dramatic scene featuring a man in a dark cap on the left, looking towards the right. On the right, a hand is raised, illuminated by a bright red light. The background is dark with a blue light source on the right. The word "DRAMATIC" is written in large, white, bold, sans-serif capital letters across the center of the image.

DRAMATIC



TRAINING

Mountview Academy of Theatre Arts
120 Peckham Hill Street, London SE15 5JT
020 8881 2201 · admissions@mountview.org.uk · mountview.org.uk





WELCOME

As President of Mountview it gives me real pleasure to introduce you to this fine drama school which enjoys a worldwide reputation for excellence.

This is the first step on your stimulating journey to entering a complex and exciting industry. Of course there is no easy route to success and there can be no guarantees, but professional training will prepare you for the start of what I hope will be a long, fulfilling and fruitful career.

If you come to Mountview you will attend a world-class drama school where the staff is dedicated to helping you get the very best out of your training no matter your background. This prospectus beautifully details the courses available to you whether you want to train for performance or the production arts.

With very best wishes,

DAME JUDI DENCH CH, DBE

President

Mountview is amazing.

We think it's one of the best places you could possibly train if you want to work in theatre – whether it's on stage or backstage.

Mountview's staff is a group of passionate specialists with years of professional experience who are committed to making sure each student has the best possible practical training for their future career. We work in what is perhaps the most competitive of all occupations and are dedicated to ensuring students leave Mountview 'industry-ready' as creative, independent, dynamic artists.

We are a community of practitioners who value inclusive hard work, a familial atmosphere, mutual respect and artistic excellence.

We are incredibly pleased to introduce Mountview's new home in Peckham. Completed in 2018, the stunning building offers the best possible facilities and location. The building includes 21 acting, dance and rehearsal studios, two theatres, two TV studios, a radio studio, production workshops, specialist teaching rooms, music practice rooms and social spaces. There is also a commercial rehearsal space in use by professional companies. Mountview is also right at the heart of one of the most vibrant, diverse and creative communities in London: Peckham, south London.

STEPHEN JAMESON **SARAH PREECE**

Principal & Artistic Director *Executive Director*

To succeed in this industry you need talent, dedication and a broad range of skills. You need to learn to be adaptable and prepared for anything.

A diverse and detailed training is vital and at Mountview you will benefit from experienced and inspiring teachers as well as from regular visits by working professionals.

Everything required is here to help you prepare for what I think is the best career in the world.

VIKKI HEYWOOD CBE

Chairman

The University of East Anglia is proud to validate Mountview's undergraduate and postgraduate degrees.

Mountview's vocational training is a perfect complement to UEA's global reputation for study in the creative arts. We place a strong emphasis on the importance of the student experience, and the significant contact through teaching time and personal support that all students receive at Mountview is very much in harmony with this ethos.

PROFESSOR DAVID RICHARDSON

Vice-Chancellor, University of East Anglia

CONTENTS

- 7 DRAMATIC TRAINING**
- 21 ACTING**
 - Foundation (Part-time)
 - Foundation (Full-time)
 - BA (Hons) / Trinity Diploma
 - MA
- 33 ACTOR MUSICIAN**
 - BA (Hons) / Trinity Diploma
- 39 MUSICAL THEATRE**
 - Foundation (Part-time)
 - Foundation (Full-time)
 - BA (Hons) / Trinity Diploma
 - MA
- 51 CREATIVE PRODUCING**
 - MA
- 53 MUSICAL DIRECTION**
 - PG Diploma
 - MA
- 55 SITE-SPECIFIC PERFORMANCE**
 - MA
- 59 THEATRE FOR COMMUNITY AND EDUCATION**
 - MA
- 61 THEATRE DIRECTING**
 - MA
- 65 SCENIC ART AND PROP MAKING**
 - FdA
 - BA (Hons) Top-up
- 69 THEATRE PRODUCTION ARTS - LIGHTING**
 - FdA
 - BA (Hons)
 - Mountview Diploma
- 73 THEATRE PRODUCTION ARTS - SOUND**
 - FdA
 - BA (Hons)
 - Mountview Diploma
- 77 THEATRE PRODUCTION ARTS - STAGE MANAGEMENT**
 - FdA
 - BA (Hons)
 - Mountview Diploma
- 83 HOW TO APPLY**
 - Admissions & Applications
 - Auditions & Interviews
 - Fees & Funding
 - Accommodation
- 88 ABOUT MOUNTVIEW**
 - Alumni
 - Staff & Trustees
 - Artistic Associates & Guest Artists
 - Made at Mountview

A group of performers on stage, illuminated by blue lighting. The performers are in various poses, some looking towards the camera, others looking away. The background is dark, and the lighting creates a dramatic atmosphere.

**MOUNTVIEW IS ONE OF THE UK'S FOREMOST DRAMA
SCHOOLS AND IS RECOGNISED AS ONE OF THE BEST
PLACES IN THE WORLD TO TRAIN IN MUSICAL THEATRE**

PERFORMING ON THE WORLD'S STAGE

We provide the highest quality training for actors, directors, producers and theatre production artists and have a strong commitment to the specialised requirements of TV, film and radio.

We offer intensive, practical training with all full-time students receiving over 30 hours of contact teaching each week, 36 weeks per year in our studios and theatres. You will be taught in small groups and also receive regular one-to-one sessions with personal tutors and specialist practitioners.







GETTING RESULTS

The hands-on, intensive coaching you'll receive at Mountview nurtures thought, energy and commitment. It provides the tools needed to succeed in a competitive industry.

The results speak for themselves: 95% of students work professionally within one year of graduation.

As well as being taught by our experienced, full-time staff you will also work with current theatre practitioners: directors, designers, choreographers, musical directors, producers, actors, stage and production managers. This provides fantastic professional contacts on completion of the course.

TRAINING:

**36 WEEKS PER YEAR
30+ HOURS PER WEEK**

EMPLOYMENT:

95% OF STUDENTS WORKING WITHIN ONE YEAR

STANDARDS:

**OFSTED RATING: OUTSTANDING
94% OVERALL SATISFACTION IN NATIONAL
STUDENT SURVEY 2018**

OPEN TO ALL

We encourage applications from everyone.

Along with our partners The Diversity School Initiative, we are striving to ensure that there are no barriers to entering drama school.

We hold auditions across the UK and internationally and our nationwide scouting partners identify talented people from low-income or marginalised backgrounds and offer them free auditions. Our admissions department will work with you to access available grants and financial assistance, and talk you through the support in place for accessing and feeling safe in our building.

Our day-long auditions include workshop classes and meet-and-greet sessions with current students to ensure that you can get a feel for life and training at Mountview and so we can see you at your relaxed best. Find out more on p83.







LOOKING AFTER YOU

Your welfare and happiness are of prime importance and great emphasis is placed on pastoral care. Each week there are timetabled wellbeing classes placing mental and physical health at the heart of your training. You will be assigned a personal tutor who can advise you throughout your course and first years are teamed up with a second year "buddy" to provide support through your first terms with us. Our dedicated Student Welfare Manager works alongside the personal tutors and provides support and guidance to students with disabilities, mental health difficulties and specific learning difficulties such as dyslexia and dyspraxia.

Mountview provides access to free counselling as well as induction sessions on stress management and nutrition. If you are eligible for funding through the Disabled Students Allowance you will be guided through the application process and we'll make reasonable adjustments if you have learning support needs.

With only just over 400 students (including Foundation, Undergraduate and Postgraduate students) Mountview is a supportive and nurturing environment.





MASTERCLASSES AND MORE

Students often receive tickets to West End shows and benefit from masterclasses and Q&A events from leading actors and theatre creatives. Graham Norton, Sir Michael Boyd, Rosalie Craig, Mike Leigh, Topher Campbell and Dame Judi Dench have all given recent masterclasses.

Mountview students have recently performed at the BBC Proms with the John Wilson Orchestra, on *Michael Ball and Alfie Boe TV Special*, *The Elaine Paige Show* on Sky Arts, at Almeida Theatre gala performances, at the Sam Wanamaker Festival, *Magic at the Musicals* at the Royal Albert Hall and have toured to the World Shakespeare Festival in Germany.

London is the best possible city for training actors and technical theatre artists and the world outside the rehearsal room undoubtedly plays as important a part in shaping students as the work within. During the course you'll work in our theatres as well as a range of professional venues across the city.

MOUNTVIEW IN PECKHAM

In September 2018 we opened our doors to our brand new home in the heart of Peckham in south London.

Just 12 minutes from London Bridge and 15 from Victoria Station, Peckham is London's new creative heart. Our neighbours include Camberwell College of Arts, Bold Tendencies, South London Gallery and the Bussey Building as well as Shakespeare's Globe, the Bridge Theatre, Siobhan Davies Dance Company and the Old and Young Vics.

In 2015 Vogue described Peckham as 'London's cultural epicentre' and Time Out listed Peckham in its Top 10 Places To Be 2017.

You'll be surrounded by a wealth of owner-run bars, restaurants and coffee shops. Like Mountview, Peckham is fiercely independent and proud of taking its own path.

Our building is edged on one side by Surrey Canal Walk, a greenway leading to the 140-acre Burgess Park. Opposite us are the Stirling Prize-winning library and Peckham Pulse with its swimming pool and gym. Entertainment, exercise, education and relaxation are at your fingertips.



The building is being designed by Carl Turner Architects with theatre consultants Charcoal Blue.

Facilities include:

- 200-seat Mountview Theatre
- 80-seat Backstage Theatre
- 21 rehearsal, acting and dance studios
- Two TV studios and a radio suite
- 12 singing and music practice rooms
- Specialist library and learning resource centre
- Production workshops
- Student common room and communal social areas
- Wellbeing suite
- Cafés and bars



I love Peckham for its creativity and its diversity...
I can't think of a better place for a theatre school.

OLIVIA COLMAN

Campaign Ambassador

Mountview would like to thank all those who have supported our new home and move to Peckham.







ACTING

FOUNDATION IN ACTING

ONE YEAR **PART-TIME**

THIS PART-TIME EVENING FOUNDATION COURSE DELIVERS THE CORE ELEMENTS OF SKILLS TRAINING WHILE DEVELOPING CREATIVITY AND ARTISTIC IDENTITY

Not everyone is in a position to commit to full-time training. With classes taking place three evenings a week this course enables students to study alongside their work. This structure, combined with competitive course fees, makes it one of the most accessible Foundation courses in the UK.

You will receive nine hours of contact teaching each week over two terms. The course is taught from September to April over three evenings each week.

Skills classes focus on the core discipline areas of acting, voice and movement and the course is a balance of 45% skills training, 30% audition preparation and 25% performance-based work.

While the course is part-time in its delivery its content, intensity and the demands on the student mirror its full-time counterpart. Students develop technique and repertoire for future drama school auditions.

Skills-based classes and performance work throughout the training will include:

TERM 1	TERM 2
Skills	
Acting	Improvisation
Actor & text	Classical monologues
Improvisation	Contemporary monologues
Voice	
Movement	
Audition preparation	
Performance Project Work	
Final show	



Mountview not only gave me invaluable lessons to improve my craft, they also helped prepare me for life. The support of the staff moulded me from a boy into a man.

ASAN N’JIE

Mountview Alumnus (Ready Player One, Mount Pleasant)

HOW TO APPLY

Entry is based on performance at audition and previous academic qualifications are not essential.

Application and audition information p83.

VALIDATED BY MOUNTVIEW

2019/20 TERM DATES

30 weeks' training over two terms
September – December
January – April

2019/20 FEES

UK/EU Students: £2,680

This is a non-accredited course which does not attract government funding. All students offered places on the foundation course are required to fund both the annual fee and all living costs.

OTHER COSTS

Include black active wear for workshops and dance shoes – allow around £180.

ACTING

FOUNDATION IN ACTING FOR STAGE AND SCREEN PERFORMANCE

ONE YEAR **FULL-TIME**

MOUNTVIEW'S FULL-TIME FOUNDATION-LEVEL TRAINING FOCUSES ON THREE KEY AREAS OF ARTISTIC DEVELOPMENT: CREATIVITY, TECHNIQUE AND READINESS

It is the equal focus on these three pillars that allows you to find and develop your own artistic identity and process.

Our Foundation in Acting is led by the same full-time training team as our BA (Hons) course and is designed to prepare students to become self-led creative artists as well as to develop the skills needed to embark on further vocational acting training.

Students receive 30 to 35 hours of contact teaching each week over two 15-week terms. The training includes a focused audition preparation module allowing students to develop technique and repertoire for future drama school auditions.

The course is made up of 55% skills training, including TV, film and radio, and 45% project and performance-based work.

COURSE MODULES AND COMPONENTS

TERM 1	TERM 2
Skills	
Acting	Acting
TV, film and radio	TV, film and radio
Improvisation	Improvisation
Actor & text	Actor & text
Voice	Voice
Movement	Movement
Singing	Singing
Dance	Dance
	Verbatim theatre
	Classical & contemporary monologues
Performance Project Work	
Truth & connection	Research & development
Physical expression	Audition preparation
Verbal/vocalisation	Final show
Shakespeare	
Audition preparation	



Mountview's Foundation in Acting delivers a balance of preparing for future drama school auditions and preparing for a life-long career. It is not just about how to deliver a two-minute monologue – it is about unlocking creative impulse and developing performance technique.

HOW TO APPLY

Entry is based on performance at audition and previous academic qualifications are not essential.

Application and audition information p83.

VALIDATED BY MOUNTVIEW

TERM DATES

30 weeks' training over two terms
September – December
January – April

2019/20 FEES

UK/EU Students: £8,160

This is a non-accredited course which does not attract government funding. All students offered places on the foundation course are required to fund both the annual fee and all living costs.

One of the most beloved of our national drama schools, Mountview's commitment to diversity has made it vital to the future not just of British theatre, but film and TV industries.

STEPHEN DALDRY CBE

Director

(The Crown, The Inheritance)

OTHER COSTS

Include black active wear for workshops and dance shoes – allow around £180.

ACTING

BA (HONS) IN PERFORMANCE - ACTING TRINITY DIPLOMA IN PROFESSIONAL ACTING

THREE YEARS **FULL-TIME**

MOUNTVIEW'S VOCATIONAL ACTOR TRAINING WILL THOROUGHLY PREPARE YOU FOR A CAREER IN THEATRE, TV, FILM AND RADIO

The course develops technical skills through workshops and performances. Classes are designed to inspire imaginative engagement and develop practical experience. They are places where you can take risks, expand your range and develop your strengths.

There are only 34 places available each year. Taught in two groups, you'll receive 36 hours of contact teaching time each week.

Study takes place over three 12-week terms per year.

The first half of each term is devoted to skills classes whilst in the second half you work on a range of performance projects encompassing British, American and world writers.

In your second year you also work closely with Mountview's Industry Liaison Manager to understand and prepare for life as a working actor.

The focus of the third year is film and public performance. You'll work with professional directors to present a range of productions in Mountview's theatres and a West End showcase as well as creating a voice and film showreel. Audiences include agents, casting directors and other industry figures as well as the general public. If you have a USA work visa you also have the option of a New York showcase (flights and accommodation costs apply).



This is a fantastic school. They gave me a place when all the others rejected me and changed my life.

EDDIE MARSAN

Mountview Alumnus

(Ray Donovan, Happy-Go-Lucky)

COURSE MODULES AND COMPONENTS

YEAR 1	YEAR 2	YEAR 3
Skills		
Acting	Acting	Audition technique
Acting for camera	Acting for camera	Reflection on acting practice
Improvisation	Singing & musical theatre	
Actor & text	Actor & text	
Voice	Voice	
Speech	Sight reading	
Singing	Movement & dance	
Movement & dance	Singing & music	
Sight reading	Radio	
Verse	Stage combat	
Alexander Technique	Career development	
Research	Reflection on acting practice	
Reflection on acting practice		
Performance		
Realism project	Shakespeare	Three public productions
Ensemble project	Comedy of Manners	Industry showcase
Contemporary play	20th Century Realism	TV showreel
	American	Recorded voicereel
	Verbatim theatre	

All modules are compulsory. This is a practical, vocational course which is assessed both continuously and through specific assignments. You are required to write a reflection on acting practice during each year of the course which supports your ability to interrogate and reflect upon your learning. There are also supporting classes that are unassessed elements of the training including: Alexander Technique, audition technique and the third year professional showcase.

You have the opportunity to undertake the Diploma in Professional Acting (validated by Trinity College London) whilst following the degree training.

If you secure professional work in your final year you may, subject to approval, be assessed on this in place of one of the public productions and still receive a Degree/Trinity Diploma.

HOW TO APPLY

Entry is based on performance at audition. Previous formal academic qualifications are not essential.

Application and audition information p83.

Students who receive a Dance and Drama Award (DaDA) will work towards the Trinity College London Diploma in Professional Acting in addition to completing the BA (Hons) in Performance. An additional registration fee for the BA will apply.

From the first audition, I knew that Mountview was the school for me. It has been the most incredible three years. I've met friends that I will hold dear for the rest of my life.

ARIAN NIK

*Mountview Alumnus
(Artemis Fowl, The Village)*

**BA VALIDATED BY UNIVERSITY OF EAST ANGLIA
DIPLOMA VALIDATED BY TRINITY COLLEGE LONDON**



2019/20 TERM DATES

Autumn: September – December
Spring: January – April
Summer: May – July

2019/20 FEES

UK/EU Students: £13,160
International Students: £17,165
Fees are subject to annual review and may increase in years 2 and 3 in line with inflation. One term's notice will be given of any increases.

OTHER COSTS

Include black active wear for workshops and dance shoes – allow around £180. In year 3 there will be additional costs for headshots and Spotlight membership – allow £350.

ACTING

MA IN PERFORMANCE - ACTING

ONE YEAR **FULL-TIME**

Mountview's MA in Performance – Acting is designed to give students with a previous degree or relevant practical experience the skills and contacts to succeed as an actor.

THE COURSE DEVELOPS CREATIVE AND PRACTICAL SKILLS OVER AN INTENSIVE THREE-TERM PROGRAMME OF TRAINING AND STUDY


There are only 32 places available each year. With over 36 hours of contact teaching time each week and taking place with a maximum of 16 students per class this postgraduate acting course delivers focused, hands-on training.

Over the first two terms you will take skills classes. These are complemented by performance projects including contemporary writing, Shakespeare, European and American drama and original devised work.

In the final term, you'll present a fully-staged public production and professional showcase attended by agents, casting directors and other prominent industry professionals. If you have a USA work visa you will also have the option of a New York showcase (flights and accommodation costs apply).

In your third term you'll also work closely with Mountview's Industry Liaison Manager to understand and prepare for life as a working actor.

TERM 1	TERM 2	TERM 3
Skills		
Acting Acting for camera Improvisation Voice Movement & dance Singing	Classical scene work Acting for camera Recorded voice Voice Movement & dance Singing	Audition technique Career development
Performance		
Open space Contemporary play 1	Shakespeare Contemporary play 2	Showcase Public production Television & film
MA Creative Project		
Lectures Seminars Tutorials	Lectures Seminars Tutorials	Creative project Presentation & written submission

A photograph of two women embracing. The woman on the left has grey hair and is wearing a purple floral patterned top. The woman on the right has dark hair and is wearing a bright yellow ribbed sweater. She is holding a wine glass and has several colorful bracelets and rings on her hands. The background is softly blurred, showing what appears to be an indoor setting with warm lighting and some decorative elements.

Training at Mountview was both the most challenging and rewarding experience I've had. The support and guidance I received whilst facing fears and insecurities that performing naturally brings was fantastic.

VARUN SHARMA

Mountview Alumnus

Assessment is based on work throughout the course. If you wish to complete the MA you will attend a series of seminars and prepare a creative project. The MA is not compulsory and if you don't take it you'll be awarded a Postgraduate Diploma.

HOW TO APPLY

Entry is based on performance at audition. If you don't hold an undergraduate degree you will need to undertake an access assignment to establish suitability for undertaking the MA.

Application and audition information p83.

VALIDATED BY UNIVERSITY OF EAST ANGLIA

2019/20 TERM DATES

Autumn: September – December
Spring: January – April
Summer: May – July

2019/20 FEES

UK/EU Students: £16,660
International Students: £18,720

OTHER COSTS

Include black active wear for workshops and dance shoes – allow around £180. Headshots and Spotlight membership – allow £350.





ACTOR MUSICIAN

BA (HONS) IN PERFORMANCE - ACTOR MUSICIAN

TRINITY DIPLOMA IN PROFESSIONAL ACTING

THREE YEARS **FULL-TIME**

THERE IS AN EVER-INCREASING DEMAND FOR PERFORMERS WHO COMBINE FIRST-RATE ACTING ABILITY WITH A HIGH LEVEL OF MUSICIANSHIP

Mountview's Actor Musician course develops these dual skills to the highest level, creating graduates who combine skills in acting and music in their professional lives.

Whilst a high level of prior musical experience is a pre-requisite, it is not necessary to have achieved formal music qualifications.

There is a maximum of 16 places each year. Teaching mirrors Mountview's actor training but with specialised music elements and you'll receive 36 hours of contact teaching time each week including one-to-one singing and instrumental lessons.

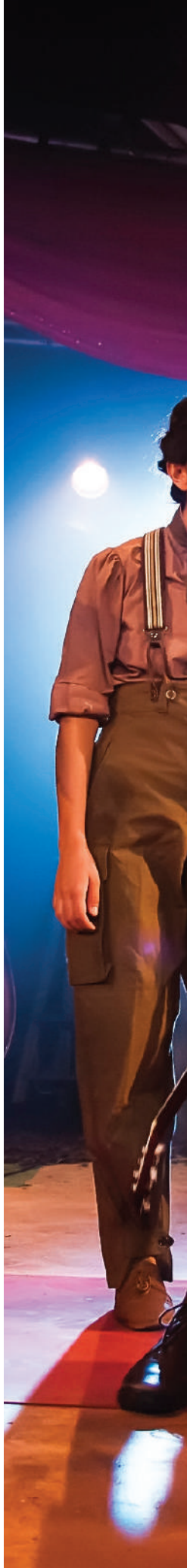
The course develops technical skills through workshops and performance opportunities. During the course you'll engage in a range of actor musician projects, working on Shakespeare, contemporary plays, world theatre and musicals as well as devising original work.

Study takes place over three 12-week terms a year.

The first half of each term is devoted to skills classes whilst in the second half of each term you will work on performance projects which are presented in-house to fellow students and staff.

In the second year you'll also work closely with Mountview's Industry Liaison Manager to understand and prepare for life as a working actor.

The focus of the third year is public performance and you'll work with professional directors to present a range of productions and a West End showcase and create a voice and film showreel. Audiences include agents, casting directors and other industry figures as well as the general public. If you have a USA work visa you will also have the option of a New York showcase (flights and accommodation costs apply).





COURSE MODULES AND COMPONENTS

YEAR 1	YEAR 2	YEAR 3
Skills		
Acting	Acting	Audition technique
Improvisation	Acting for camera	Reflection on acting practice
Actor & text	Actor & text	
Voice	Voice	
Speech	Sight reading	
Singing	Movement & dance	
Solo & ensemble music	Singing	
Musicality	Solo & ensemble music	
Music theory & repertoire	Music theory & repertoire	
Movement & dance	Stage combat	
Alexander Technique	Career development	
Research	Reflection on acting practice	
Reflection on acting practice		
Performance		
Realism project	Classic book musical	Three public productions
Ensemble project	Modern play	Showcase
Music & text project	Shakespeare	TV showreel
	Modern book musical	Recorded voicereel
	Devised dance	

All modules are compulsory. This is a practical, vocational course which is assessed both continuously and through specific assignments. You are required to write a reflection on acting practice during each year of the course which supports your ability to interrogate and reflect upon your learning. There are also supporting classes that are unassessed elements of the training including: Alexander Technique, musicality, audition technique and the third year professional showcase.

You have the opportunity to undertake the Diploma in Professional Acting (validated by Trinity College London) whilst following the degree training.

If you secure professional work in the final year you may, subject to approval, be assessed on this in place of one of the public productions and still receive a Degree/Trinity Diploma.

Students who are advanced instrumental players have the opportunity to sit ABRSM or Trinity Grade 8 and Diploma through independent arrangement with

their instrumental tutors. (Additional fees apply.)

HOW TO APPLY

Entry is based on performance at audition. Previous formal academic qualifications are not essential.

Application and audition information p83.

Students who receive a Dance and Drama Award (DaDA) will work towards the Trinity College London Diploma in Professional Acting in addition to completing the BA (Hons) in Performance. An additional registration fee for the BA will apply.

**BA VALIDATED BY UNIVERSITY OF EAST ANGLIA
DIPLOMA VALIDATED BY TRINITY COLLEGE LONDON**

Mountview has taught me to be brave,
to trust in the beauty of imagination and
play, to feel safe in knowing there are no
wrong choices, just choices.

TAYLA BUCK

Mountview Alumna



2019/20 TERM DATES

Autumn: September – December
Spring: January – April
Summer: May – July

2019/20 FEES

UK/EU Students: £13,160
International Students: £17,165
*Fees are subject to annual review and
may increase in years 2 and 3 in line
with inflation. One term's notice will
be given of any increases.*

OTHER COSTS

Include black active wear for workshops and
dance shoes – allow around £180. In year 3
there will be additional costs for headshots
and Spotlight membership – allow £350.





MUSICAL THEATRE

FOUNDATION IN MUSICAL THEATRE

ONE YEAR **PART-TIME**

MOUNTVIEW'S PART TIME FOUNDATION IN MUSICAL THEATRE COVERS THE CORE ELEMENTS OF TRIPLE THREAT TRAINING: ACTING, SINGING AND DANCE

With classes taking place three evenings per week students are able to work alongside their studies to support themselves financially. This ability to work combined with competitive course fees makes this one of the most accessible Musical Theatre Foundation courses in the UK.

The course promises a rigorous introduction to the performance skills required in the musical theatre discipline. The training is equally focussed on acting, singing and dance with a balance of 40% skills, 35% audition preparation and 25% performance-based work.

Demands on the students are high and the course will develop core technique and creativity and prepare students for further training and auditions.

The training includes a focused audition preparation module allowing students to develop technique and repertoire for future drama school auditions.

The course is taught from September to April, with 9 hours each week over three evenings.

COURSE MODULES AND COMPONENTS

TERM 1	TERM 2
Skills	
Acting: actor & text, improvisation	Classical monologues
Singing: ensemble, musicality	Contemporary monologues
Dance: Ballet/Jazz	Acting through song
	Dance routine
Performance Project Work	
Final show	



The course at Mountview has been fantastic preparation for working in the industry.

SIMBI AKANDE

Mountview Alumna
(Fiddler on the Roof, Company)

HOW TO APPLY

Entry is based on performance at audition and previous academic qualifications are not essential.

Application and audition information p83.

VALIDATED BY MOUNTVIEW

TERM DATES

30 weeks' training over two terms
September – December
January – April

2019/20 FEES

UK/EU Students: £3,060
This is a non-accredited course which does not attract government funding. All students offered places on the foundation course are required to fund both the annual fee and all living costs.

OTHER COSTS

Include black active wear for workshops, dance shoes and dancewear – allow around £250.

MUSICAL THEATRE

FOUNDATION IN MUSICAL THEATRE

ONE YEAR **FULL-TIME**

MOUNTVIEW'S FOUNDATION FINELY BALANCES CORE TECHNIQUE TRAINING ACROSS ACTING, SINGING AND DANCE WHILE DEVELOPING CREATIVITY AND ARTISTIC IDENTITY

Led by the same full-time training team as our BA (Hons) course, the full-time Foundation in Musical Theatre is focused equally on the triple threat disciplines of acting, singing and dance.

The course is all about helping you find your own creative voice and developing the technique needed to progress onto further vocational training.

There are 32 places available each year. You will receive 30 to 36 hours of contact teaching each week over two 15-week terms.

The training includes a focused audition preparation module allowing students to develop technique and repertoire for future drama school auditions.

The course is made up of 60% skills training and 40% project-based work.

COURSE MODULES AND COMPONENTS

TERM 1	TERM 2
Skills	
Acting	Acting
Actor & text	Improvisation
Creative practice	Classical monologue
Dance: jazz & ballet	Dance: jazz & ballet
Singing: ensemble, repertoire, technique & musicality	Singing: ensemble, acting through song, technique
Individual singing lessons	Individual singing lessons
Voice	Voice
Movement	Movement
Performance Project Work	
Truth & connection	Audition preparation
Classic book musical	Research & development
Contemporary musical	Final show
Audition preparation	



This course delivers a balance of preparing for future drama school auditions and preparing for a life-long career. It is not just about a single discipline, it is laying the rigorous foundations of the triple-threat performer.

HOW TO APPLY

Entry is based on performance at audition and previous academic qualifications are not essential.

Application and audition information p83.

The Foundation in Musical Theatre was one of the best years of my life – full of fantastic opportunities and the chance to experiment and prepare for the challenges ahead. My mind was constantly blown away by information and discoveries!

HEATHER PORTE

Former Foundation in Musical Theatre student, currently completing BA (Hons) in Performance (Musical Theatre)

VALIDATED BY MOUNTVIEW

TERM DATES

30 weeks' training over two terms
September – December
January – April

2019/20 FEES

UK/EU Students: £10,150

The Leverhulme Trust Scholarship funds one full-time Musical Theatre Foundation student each year. *This is a non-accredited course which does not attract government funding. All students offered places on the foundation course are required to fund both the annual fee and all living costs.*

OTHER COSTS

Include black active wear for workshops, dance shoes and dancewear – allow around £250.

MUSICAL THEATRE

BA (HONS) IN PERFORMANCE - MUSICAL THEATRE

TRINITY DIPLOMA IN PROFESSIONAL MUSICAL THEATRE

THREE YEARS **FULL-TIME**

OVER 25 YEARS AGO MOUNTVIEW CREATED THE UK'S FIRST SPECIALIST THREE-YEAR MUSICAL THEATRE TRAINING AND OUR ALUMNI CONTINUE TO DOMINATE THE INDUSTRY

There is a maximum of 38 places available each year and you'll receive 36 hours' contact teaching time – including one-to-one singing lessons – each week.

The course develops technical skills through practical classes, workshops and performances and is split equally between the three essential musical theatre skills: acting, singing and dance.

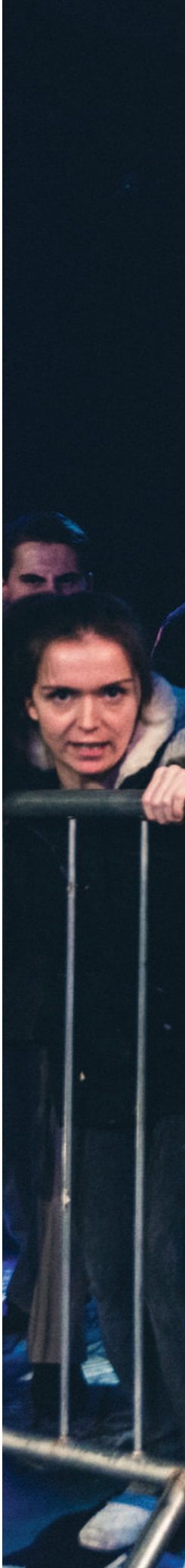
Study takes place over three 12-week terms a year.

The first half of each term is devoted to skills classes whilst in the second half of each term you'll work on in-house performance projects.

In the second year you'll also work closely with Mountview's Industry Liaison Manager to understand and prepare for life as a working actor.

The focus of the third year is film and public performance and you'll present a range of productions in Mountview's theatres and a West End showcase as well as create a voice and film showreel.

Audiences include agents, casting directors and other industry figures as well as the general public. If you have a USA work visa you also have the option of a New York showcase (flights and accommodation costs apply).





COURSE MODULES AND COMPONENTS

YEAR 1	YEAR 2	YEAR 3
Skills		
Acting	Acting	Jazz
Improvisation	Acting for camera	Ballet
Actor & text	Actor & text	Tap
Voice	Stage combat	Singing
Speech	Voice	Devising
Singing	Sight reading	Audition technique
Music theory	Singing	Reflection on Acting Practice
Jazz	Jazz	
Ballet	Ballet	
Tap	Tap	
Movement	Movement	
Alexander Technique	Music theory	
Research	Acting through song	
Reflection on Acting Practice	Career development	
	Reflection on Acting Practice	
Performance		
Realism project	Classic book musical	Three public productions
Ensemble project	Modern play	Showcase
Song & dance project	Shakespeare	TV showreel
	Modern book musical	Recorded voicereel
	Devised dance	

All modules are compulsory. This is a practical, vocational course which is assessed both continuously and through specific assignments. You are required to write a reflection on acting practice during each year of the course which supports your ability to interrogate and reflect upon your learning. There are also supporting classes that are unassessed elements of the training including: Alexander Technique, devising, audition technique and the third year professional showcase.

You have the opportunity to undertake the Diploma in Professional Musical Theatre (validated by Trinity College London) whilst following the degree training.

If you secure professional work in the final year you may, subject to approval, be assessed on this in place of one of the public productions and still receive a Degree/Trinity Diploma.


HOW TO APPLY

Entry is based on performance at audition and previous academic qualifications are not essential.

Application and audition information p83.

Students who receive a Dance and Drama Award (DaDA) will work towards the Trinity College London Diploma in Professional Musical Theatre in addition to completing the BA (Hons) in Performance. An additional registration fee for the BA will apply.

**BA VALIDATED BY UNIVERSITY OF EAST ANGLIA
DIPLOMA VALIDATED BY TRINITY COLLEGE LONDON**



Mountview is the drama school that gave me all. Today more than ever when young, scrappy and hungry artists from all backgrounds need their authentic voice heard this school's work means more to me than anything.

GILES TERERA

Mountview Alumnus

(2018 Olivier Award Winner, Hamilton)

2019/20 TERM DATES

Autumn: September – December
Spring: January – April
Summer: May – July

2019/20 FEES

UK/EU Students: £14,410

International Students: £17,165

Fees are subject to annual review and may increase in years 2 and 3 in line with inflation. One term's notice will be given of any increases

OTHER COSTS

Include black active wear for workshops, dance shoes and dancewear – allow around £250. In year 3 there will be additional costs for headshots and Spotlight membership – allow £350.

MUSICAL THEATRE

MA IN PERFORMANCE - MUSICAL THEATRE

ONE YEAR **FULL-TIME**

MOUNTVIEW IS RECOGNISED AS ONE OF THE BEST PLACES IN THE WORLD TO TRAIN FOR A CAREER IN MUSICAL THEATRE

Our MA is aimed at students with a previous degree (in any subject) and some experience in musical performance. There are only 32 places available each year and you'll receive over 36 hours' contact teaching time each week in groups of 16 or fewer.

The MA develops practical skills through classes, workshops and performances and is split equally between the three essential musical theatre skills: singing, acting and dance. You will receive one-to-one singing classes each week.

Over the first two terms you'll take skills classes. These are complemented by

performance projects including work on a non-musical modern text and contemporary and classic book musicals.

In the final term, you'll present a fully-staged public production and professional showcase attended by agents, casting directors and other prominent industry professionals. American students have the option of a showcase in New York (flights and accommodation costs apply).

In the third term you will also work closely with Mountview's Industry Liaison Manager to prepare for life as a working actor.

TERM 1	TERM 2	TERM 3
Skills		
Acting Improvisation Approaches to text Voice Dance & movement Singing & music	Classical scene work Acting for camera Recorded voice Voice Dance & movement Singing & music	Audition technique Career development
Performance		
Open space Modern text Book musical 1	Scene into song Book musical 2	Devised musical workshop Showcase Public production
Creative Project		
Lectures Seminars Tutorials	Lectures Seminars Tutorials	Creative project Presentation & submission of project map



Assessment is based on work throughout the course. If you wish to complete the MA you'll prepare for a creative project through a series of seminars. The MA module is not compulsory and if you don't wish to take it you will be awarded a Postgraduate Diploma.

HOW TO APPLY

Entry is based on performance at audition. If you don't hold an undergraduate degree you will need to undertake an access assignment to establish suitability for undertaking the MA.

Application and audition information p83.

VALIDATED BY UNIVERSITY OF EAST ANGLIA

2019/20 TERM DATES

Autumn: September – December
Spring: January – April
Summer: May – July

2019/20 FEES

UK/EU Students: £17,700
International Students: £20,275

OTHER COSTS

Include black active wear for workshops, dance shoes and dancewear – allow around £250. Headshots and Spotlight membership – allow £350.

St Olaves
Ch Yd

BEhold the





CREATIVE PRODUCING

MA IN CREATIVE PRODUCING

ONE YEAR **FULL-TIME**

MOUNTVIEW'S MA IN CREATIVE PRODUCING EXPLORES AND PROVIDES EXPERIENCE AND THE SKILLS NEEDED TO BE A SUCCESSFUL THEATRE PRODUCER

Running since 2015, almost all graduates have already gone on to work professionally in the UK and internationally, both on their own projects and with companies including Headlong, Theatre Royal Stratford East, Live Theatre in Newcastle, Park Theatre and Jermyn Street Theatre.

Theory and case study work over the first two terms are combined with practical experience and a series of guest lectures. You will create your own public work and produce a production as part of Mountview's Directors/Producers Season in the third term.

There is a maximum of 14 places available each year.

COURSE MODULES AND COMPONENTS

TERM 1	TERM 2	TERM 3
	Skills	Creative Practice
Arts ecology Arts business Licencing & royalties Dramatic critical practice & commissioning Theatre making & producing in the not-for-profit sector	Finance & fundraising Marketing & audience development Commercial producing & general management Touring Digital futures Understanding technical theatre International collaboration & presentation	Solo play as part of Creative Producers' festival and collaboration with MA Theatre Directors on larger scale work Reflective evaluation



The MA in Creative Producing provides students with invaluable skills and networking opportunities to place them firmly within the theatre industry.

ELLIE CLAUGHTON

*Mountview Alumna
(Producer, Lung Theatre)*

All modules are compulsory. There is assessment throughout based on essays and presentations.

Teaching days are Tuesday and Wednesday. There are eight hours of lectures and two hours' tutorials and seminars each week. In addition, you will be expected to carry out two days per week of self-led study.

The course is led by Pam Fraser Solomon, an award-winning producer/director of theatre (Theatre Royal Stratford East, Young Vic), TV (*EastEnders*, *Holby City*), radio

drama and documentaries, accompanied by a programme of seminars featuring the UK's leading independent producers/theatremakers.

HOW TO APPLY

Entry is based on an interview with the Head of Course. If you don't hold an undergraduate degree you will need to undertake an access assignment to establish suitability for undertaking the MA.

Application and interview information p83.

VALIDATED BY UNIVERSITY OF EAST ANGLIA

2019/20 TERM DATES

Autumn: September – December
Spring: January – April
Summer: May – July

2019/20 FEES

UK/EU Students: £8,450
International Students: £17,165

OTHER COSTS

There will be additional costs for cultural trips – allow around £100.

MUSICAL DIRECTION

PG DIPLOMA/MA IN MUSICAL DIRECTION

ONE YEAR **FULL-TIME**

THIS IS INTENSIVE PROFESSIONAL TRAINING FOR HIGHLY SKILLED MUSICIANS EMBARKING ON A CAREER AS A MUSICAL DIRECTOR

Mountview is one of the UK's leading musical theatre trainers and the ideal springboard for a career in musical direction. The course is suited to advanced pianists, accompanists and conductors who have proven experience working with singers, actors and instrumentalists. There is a maximum of six places available each year.

The course takes place over 45 weeks split into three terms.

Throughout the year you'll participate in tutorials with leading practitioners and industry specialists. You will assist professional musical directors on in-house and public musical productions and lead musically on selected performances.

Assessment is based on work throughout the course. If you solely want to develop practical skills and make industry contacts you may opt to take the PG Diploma. If you wish to explore an additional analytical pathway you can prepare for a creative MA project through a series of seminars.

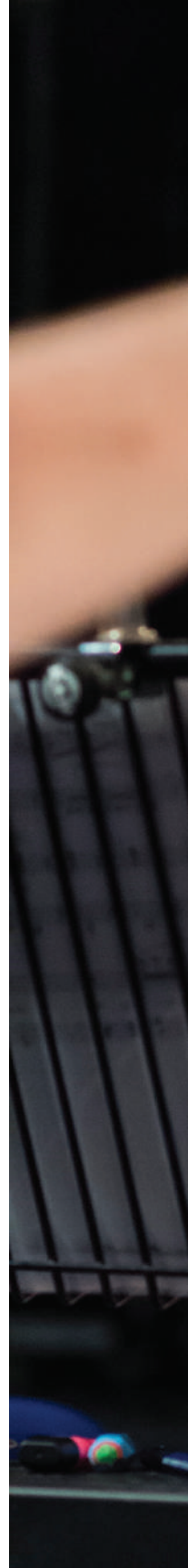
HOW TO APPLY

Entry is based on interview with the Head of Course. If you don't hold an undergraduate degree will need to undertake an access assignment to establish suitability for undertaking the MA.

Application and interview information p83.

COURSE MODULES AND COMPONENTS

TERM 1	TERM 2	TERM 3
	Skills	Performance
One-to-one keyboard technique Playing orchestral reductions Accompanying Arranging & orchestration Conducting & cueing Acting through song Reflective journal	One-to-one keyboard technique Audition rep Keyboard programming Voice & singing technique Coaching a singer Reflective journal	Assistant MD or MD on public musical Reflective journal MA presentation
	Performance	
Assistant MD on in-house or public musical	Concert, in-house project or public show	





My time at Mountview has been demanding, exciting, bundles of fun and most importantly extremely rewarding. Every day brought a new challenge, a new person to meet and a new experience.

LAUREN RONAN

Mountview Alumna

VALIDATED BY UNIVERSITY OF EAST ANGLIA

2019/20 TERM DATES

Autumn: September – December
Spring: January – April
Summer: May – July

2019/20 FEES

PG Dip UK/EU Students: £8,770
MA UK/EU Students: £10,355
International Students: £17,165

OTHER COSTS

There will be additional costs for cultural trips – allow around £100.

SITE-SPECIFIC THEATRE PRACTICE

MA IN SITE-SPECIFIC THEATRE PRACTICE

ONE YEAR **FULL-TIME** JANUARY ENTRY

GERALDINE PILGRIM IS THE REASON SITE-SPECIFIC WORK IS KNOWN AND LOVED IN THE UK - WHENEVER YOU SEE SITE-SPECIFIC OR 'IMMERSIVE' THEATRE, YOU'RE SEEING THE INFLUENCE OF HER GROUNDBREAKING WORK.

POPPY KEELING *Producer (Creative Learning, Complicite)*

Mountview's MA in Site-Specific Theatre Practice is delivered in partnership with Shoreditch Town Hall. The first course of its kind in the UK, the MA will be led by Geraldine Pilgrim, a leading practitioner in the creation of site-specific theatre installations. The course is for students interested in highly specialised training across all elements of site-specific practice.

There is a maximum of seven students per cohort.

Site-specific theatre has captured the imagination of theatre and fine art practitioners throughout the UK and internationally. True site-specific theatre engages with a chosen site's history, atmosphere and architecture to underpin devised or text-based narratives. Site-specific theatre is an art form in its own right, allowing a space to inform the final performance and acknowledging that the performance can only happen in the specific site.

Geraldine Pilgrim has been making site-specific performances and installations for over twenty years in sites including empty office blocks, schools, hotels, swimming pools, factories, hospitals, stately homes and parks. Her connections to companies including Complicite, Punchdrunk, DreamThinkSpeak, Secret Cinema and National Theatre Studio ensure that you will have access to a rich network of contacts as well as fine-tuned expertise.

The course is aimed at practitioners with an art or drama background wanting to diversify their artistic skills. Applications are also welcomed from those who are currently studying at BA level.

Learning will cover practical skills and creative realisation as well as theoretical and methodological investigation. The three terms will break down as follows:



TERM 1	TERM 2	TERM 3
<p>SITE REQUIREMENTS AND PRACTICE</p> <ul style="list-style-type: none"> Site practicalities Production planning Licensing Design, including space, lighting, sound & visual effects Inspirational site visits 	<p>CONTEXT</p> <ul style="list-style-type: none"> Lectures & open seminars from leading practitioners, focussing on methodologies, practice & innovation Shadowing: work-based learning & personal engagement 	<p>SITE-SPECIFIC PRACTICAL DISSERTATION</p> <ul style="list-style-type: none"> Research, development & production of a substantive piece of site-specific theatre Presentation of an interim exhibition with critical support and feedback
<p>SKILLS</p> <ul style="list-style-type: none"> Practical workshops from the course leader, Mountview staff & visiting practitioners A short, London-based collaborative site-specific performance 	<p>DIRECTING & SITE RESIDENCY</p> <ul style="list-style-type: none"> Individual short self-devised site-specific project directing other students A UK or overseas residency working collaboratively to create & realise a site-specific performance 	<ul style="list-style-type: none"> Production of written materials towards the practical dissertation

Teaching will take place both at Mountview's Peckham home and at Shoreditch Town Hall. Mountview's collaboration with Shoreditch Town Hall will root you in a professional space enabling practical experimentation with the site-specific form and connection to established artists.

Strong emphasis is placed on learning through practice.

HOW TO APPLY

Entry is based on an interview at which you will be invited to talk about previous experience, interests and inspiration. You will be required to provide a digital portfolio demonstrating your interests, influences and/or prior learning or experience.

Application information p83.





VALIDATED BY UNIVERSITY OF EAST ANGLIA

2019/20 TERM DATES

Autumn: September – December
Spring: January – April
Summer: May – July

2019/20 FEES

UK/EU Students: £10,355
International Students: £17,165

OTHER COSTS

There will be additional costs for cultural trips and site residency – allow around £180.

THEATRE FOR COMMUNITY AND EDUCATION

MA IN THEATRE FOR COMMUNITY AND EDUCATION

TWO YEARS **PART-TIME** **EASTER ENTRY**

A CREATIVE AND CHALLENGING ENSEMBLE EXPERIENCE IN THE TRANSFORMATIONAL POWER OF THEATRE AND THEATRE MAKING

In a society where access to the arts is at risk of being marginalised, this course develops the next generation of interdisciplinary theatre practitioners who will lead the way in providing meaningful arts experiences for all.

The course is aimed at theatre artists interested in the potential of theatre practices to address social, political and educational issues in a broad range of settings.

It is a professional training, vocational preparation and an education. It welcomes those practicing in youth, community and/or education settings, and actors and performers looking to develop and diversify their career.

Working in a maximum cohort of 12 learning and teaching will involve a dynamic relation of practice and theory through workshops, lectures, seminars and independent practice. Throughout the course you will learn and develop skills in

teaching, leading and facilitating creatively and imaginatively.

Teaching is led by Iain Tidbury, an interdisciplinary theatre-maker who previously led the artist development programme at Bristol Old Vic. Teaching takes place on Mondays allowing you to work during the rest of the week. There is also one long study weekend each term.

Strong emphasis is placed on learning through practice with continuous assessment across all the compulsory modules. Assessment modes include essays, funding application, education pack, research presentation, portfolio of case studies, performance and dissertation.

Students will define an area of interest that will lead them to creating a viable practice-based or written dissertation.

COURSE MODULES

APPLIED THEATRE PRACTICE AND PEDAGOGIES

Theatre training & theatre-making applied
Pedagogies: theory & practice

THE THEORY AND PRACTICE OF LEARNING THROUGH THEATRE

Context & critique
Theatre in education
Models of education
Practice & application
Workshop skills
Education resources

BUSINESS AND MANAGEMENT

Administration & compliance
Organisation & operations
Marketing & communications
Funding & planning

POLICIES AND AGENDAS

Diversity & inclusion
Failure & development
Local & global perspectives
Culture & cultures

CONTEMPORARY ARENAS AND PRAXES OF APPLIED THEATRE

Sites & situations
Participation groups

CREATIVE AND CULTURAL LEARNING

Design thinking
Microlearning
Cultural learning
Heritage & home
Pedagogy of the drum

DISSERTATION PROJECT (PRACTICAL OR WRITTEN)

HOW TO APPLY

Entry is based on an interview at which you will be invited to talk about previous experience, interests and inspiration.

Application information p83.



VALIDATED BY UNIVERSITY OF EAST ANGLIA

2019/20 TERM DATES

Autumn: September – December
Spring: January – April
Summer: May – July

2019/20 FEES

UK/EU Students: £10,355
International Students: £17,165

OTHER COSTS

There will be additional costs for cultural trips – allow around £100.

THEATRE DIRECTING

MA IN THEATRE DIRECTING

ONE YEAR **FULL-TIME**

AN INTENSIVE, PRACTICAL COURSE FOR PROSPECTIVE THEATRE DIRECTORS

Mountview's Theatre Directing students have gone on to work for the UK's leading theatre companies, in the West End and on Broadway. Graduates have a reputation for clarity, imaginative engagement and leadership and include Michael Longhurst – Artistic Director of the Donmar Warehouse, Maria Aberg (*Dr Faustus* RSC, *Little Shop of Horrors* Regent's Park), Joe Murphy (*Woyzeck* Old Vic) and Iqbal Khan (*Antony and Cleopatra* RSC).

Teaching is led by Peter James CBE, co-founder of Liverpool Everyman, former Artistic Director of Sheffield Theatres, Lyric Hammersmith and Principal Emeritus of LAMDA. Peter is supported by resident and freelance staff and leading professional theatre practitioners from various disciplines.

The core principle is to develop the unique voice of each student director.

My time at Mountview was inspiring, challenging and empowering: I started the year with a very raw and uninformed passion for directing – and finished it well prepared to enter the profession.

MICHAEL LONGHURST

Mountview Alumnus (Artistic Director Donmar Warehouse)

The course takes place over 45 weeks split into three terms. It blends lectures, seminars and workshops with practical work as a director – both assisting professional directors and leading on film and theatre projects. What makes Mountview's course stand out is that in the third term you will direct your own public showcase production working with a producer, designer and cast.

All modules are compulsory. There is continuous assessment and you will have regular tutorials with the course leader throughout the course, supporting module elements and working towards your self-developed MA public directing project. This project is backed up with a written dissertation.



TERM 1	TERM 2	TERM 3
The actor's process	Rehearsal techniques (devising)	Rehearsal techniques (staging)
Rehearsal techniques (actor & text)	Working with movement	Interpretation & realisation
Structure of dramatic writing	Developing an approach	Collaborating with design & production
Developing an approach	Theatre history project	Dramaturgy project
Theatre history project	Interpretation & realisation	Public production 2
	Collaborating with design & production	
	Production planning & processes	
	Public production 1	
	Dramaturgy project	

HOW TO APPLY

Entry is based on an interview at which you will be invited to talk about previous experience, interests and inspiration. Application information p83.

VALIDATED BY UNIVERSITY OF EAST ANGLIA

2019/20 TERM DATES

Autumn: September – December
 Spring: January – April
 Summer: May – July

2019/20 FEES

UK/EU Students: £14,000
 International Students: £17,165

OTHER COSTS

There will be additional costs for cultural trips – allow around £100.





Keep out

↑
THIS WAY UP

SCENIC ART AND PROP MAKING

FDA IN SCENIC ART AND PROP MAKING

TWO YEARS **FULL-TIME**

BA (HONS) TOP-UP IN SCENIC ART AND PROP MAKING

THREE YEARS **FULL-TIME**

SCENIC ARTS HAVE BEEN AN ESSENTIAL PART OF MOUNTVIEW'S PRODUCTION ARTS TRAINING FOR 40 YEARS

Two programmes offer specialist vocational training in scenic art and prop making for theatre, film, TV and related industries such as theming and heritage.

A two-year Foundation Degree (FdA) in Scenic Art and Prop Making provides a fast-track training, and a one-year top-up allows FdA graduates to gain a BA (Hons).

There is a maximum of eight places available each year with practical training running over 30 hours per week, 36 weeks per year.

The range of public productions Mountview produces gives a vast array of learning opportunities.

The FdA programme places a strong emphasis on developing specialist skills and practical problem solving. You'll learn a range of skills and processes from traditional and established methods and materials to new and future-facing technologies. The course has strong links with the industry and opportunities for work-based learning.



As an FdA graduate you will be prepared to enter the workplace, with a broad range of skills making you highly employable.

A BA (Hons) top-up year allows you to explore more advanced creative and management roles. You will take on a minimum of two major roles on productions through the year. A specialist research project requires you to apply advanced research skills to extend knowledge in a particular area of interest.

Training covers:

- Puppetry and puppet making
- Prosthetics and special effects make-up
- Painting scenic cloths and gauzes
- Specialist paint finishes and effects
- Mould making and casting
- Fantasy character costume construction
- Upholstery and furniture making
- Sculpting and modelling using specialist materials
- Working with timber, plastics, metals, resins, foams and fabrics
- Career development and entrepreneurial skills

Strong emphasis is placed on learning through practice, and the majority of work across all the modules is continuously assessed. Skills modules will be assessed through coursework and practice modules through assessment of production roles.

HOW TO APPLY

Entry is based on an interview at which you will present a portfolio of art and design work and will be invited to talk about previous experience, interests and inspirations. There are no academic entry requirements.

Application and interview information p83.

FDA/BA COURSE MODULES AND COMPONENTS

YEAR 1 FDA	YEAR 2 FDA	YEAR 3 - BA (HONS) TOP-UP
Skills		
Introduction to skills, processes & materials fundamental to prop making & scenic art	Introduction to project management, career development planning & entrepreneurial skills.	Taught classes & project work covering advanced scenic art & prop making skills, project & team management
Application of skills & processes to production	Applied craft skills include: life casting, costume cutting, figurative painting, prosthetics, makeup, fantasy & sci-fi themes	Masterclasses & seminars
Craft skills include: working with fabrics, furniture making, large-scale scenic cloths, soft props, puppetry & painting gauzes		Specialist Research Project
Practice		
Assistant level role/s on public productions	Deputy & Assistant level roles on public productions	Lead roles on public productions

VALIDATED BY UNIVERSITY OF EAST ANGLIA



2019/20 TERM DATES

Autumn: September – December
Spring: January – April
Summer: May – July

2019/20 (FDA/BA) FEES

UK/EU Students: £9,360
International Students: £17,165
Fees are subject to annual review and may increase in years 2 and 3 in line with inflation. One term's notice will be given of any increases.

OTHER COSTS

Additional costs include a basic tool kit and personal protective equipment (boots, hard hat, gloves, reflective bibs) – allow around £250.

LIGHTING

FDA IN THEATRE PRODUCTION ARTS - LIGHTING

TWO YEARS **FULL-TIME**

BA (HONS) IN THEATRE PRODUCTION ARTS - LIGHTING

THREE YEARS **FULL-TIME**

MOUNTVIEW DIPLOMA IN THEATRE PRODUCTION ARTS - LIGHTING

ONE YEAR **FULL-TIME**



MOUNTVIEW HAS BEEN TRAINING LIGHTING DESIGNERS AND TECHNICIANS FOR OVER 40 YEARS

Our vocational, hands-on course has seen graduates go on to be Chief Electrician at the Royal Shakespeare Company, freelance production electricians, and notable lighting designers.

We offer three training levels: a two-year Foundation Degree (FdA) which provides

fast-track training and a three-year BA (Hons) bringing greater experience and the possibility of design roles. For students with previous experience who are looking to formalise their skills and develop industry contacts we also offer a one-year Diploma in Theatre Production Arts specialising in lighting.



Our practical training runs over 30 hours per week, 36 weeks per year. It begins with workshops covering core skills in all areas of Production Arts in small cohorts with training from experienced industry professionals. You then move quickly on to practical show roles in lighting. Mountview produces around 26 plays and musicals each year giving you a vast array of learning experiences.

Strong emphasis is placed on learning through practice. There is continuous assessment across all the compulsory modules. Assessment is based on coursework covering the skills elements of the course and marking of practical show roles. Students gain first-hand experience of working alongside professional lighting designers, technicians and programmers.

Lighting training covers:

- Hands-on training with contemporary lighting equipment, both generic and moving lights
- Lighting systems and supporting paperwork
- Understanding and designing of temporary power systems
- Rigging and focusing to industry standard
- Construction of electrical practicals
- Programming and operating industry standard lighting consoles
- Computerised drafting and visualisation across a range of industry standard software
- Networking, soldering and other skills needed by the modern production professional
- Lighting design for plays and musicals (BA only)

FDA/BA COURSE MODULES AND COMPONENTS

YEAR 1	YEAR 2	YEAR 3 - BA (HONS) ONLY
Skills		
Introduction to key practical & research skills	Masterclasses & advanced technical lessons further developing key lighting production skills	Professional development: career planning, websites, CV writing, mock interviews & work placements
Production skills: lighting, sound, stage management & applied arts	Professional career development	Specialist practical research project
Scenography & applied practice	Work placed learning (FdA only)	
Professional career development		
Practice		
Assistant level role/s on public productions	Deputy level role/s on four to six public productions	Lead lighting roles on public productions including lighting design work if appropriate

FDA AND BA VALIDATED BY UNIVERSITY OF EAST ANGLIA DIPLOMA VALIDATED BY MOUNTVIEW

2019/20 TERM DATES

Autumn: September – December
Spring: January – April
Summer: May – July

2019/20 FEES (FDA/BA)

UK/EU Students: £9,360
International Students: £17,165

(DIPLOMA)

UK/EU Students: £6,760

DIPLOMA COURSE MODULES

TERM 1	TERM 2	TERM 3
Skills		
Pathway Studies 1 Pathway Studies 2	Research Project	Professional Development
Practice		
	Production Practice Industrial Placement Professional Practice 1	Professional Practice 2

HOW TO APPLY

Entry is based on an interview at which you will be invited to talk about previous experience, interests and inspiration.

Application and interview information p83.



Training supported by
White Light Ltd



Fees are subject to annual review and may increase in years 2 and 3 in line with inflation. One term's notice will be given of any increases.

OTHER COSTS

Additional costs include a basic tool kit and personal protective equipment (boots, hard hat, gloves, reflective bibs) – allow around £250.

SOUND

FDA IN THEATRE PRODUCTION ARTS - SOUND

TWO YEARS **FULL-TIME**

BA (HONS) IN THEATRE PRODUCTION ARTS - SOUND

THREE YEARS **FULL-TIME**

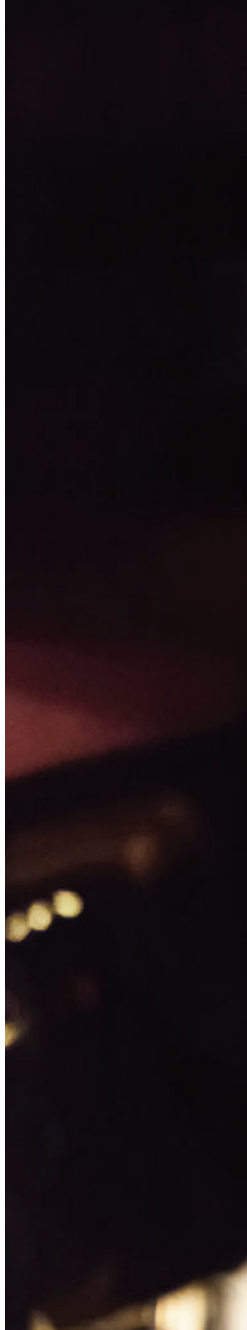
MOUNTVIEW DIPLOMA IN THEATRE PRODUCTION ARTS - SOUND

ONE YEAR **FULL-TIME**

MOUNTVIEW'S VOCATIONAL, HANDS-ON COURSES IN SOUND HAVE SEEN GRADUATES GO ON TO BE PRODUCTION SOUND ENGINEERS AND SOUND DESIGNERS IN THE WEST END, ACROSS THE UK AND INTERNATIONALLY

We offer three training levels: a two-year Foundation Degree (FdA) which provides a fast-track training and a three-year BA (Hons) with greater experience and the possibility of design roles. For students

with previous experience who are looking to formalise their skills and develop industry contacts we also offers a one-year Diploma specialising in sound.





Our practical training runs over 30 hours per week, 36 weeks per year. You'll begin with workshops covering core skills in all areas of production arts before moving quickly on to practical show roles. What sets training in sound at Mountview apart from other drama schools is that you get vast experience working on large musicals, mixing sound for West End-scale casts.

Strong emphasis is placed on learning through practice. There is continuous assessment of coursework and practical show roles throughout. All modules are compulsory.

Students gain first-hand experience of working alongside industry professionals including sound designers, engineers, radio mic fitters and programmers.

Sound training covers:

- Hands-on training with contemporary sound equipment
- Studio skills including recording and editing technology and techniques
- Understanding and designing sound systems
- Rigging and balancing sound systems
- Prepping, fitting and monitoring radio mic systems
- Programming and mixing industry standard sound desks on plays and musicals
- Networking, soldering and other skills needed by the modern production professional
- Sound design for plays and musicals (BA only)

FDA/BA COURSE MODULES AND COMPONENTS

YEAR 1	YEAR 2	YEAR 3 - BA (HONS) ONLY
Skills		
Introduction to key practical and research skills	Masterclasses and advanced technical lessons further developing key sound production skills	Professional development: career planning, websites, CV writing, mock interviews and work placements
Production skills: lighting, sound, stage management and applied arts	Professional career development	Specialist practical research project
Scenography and applied practice	Work placed learning (FdA only)	
Professional career development		
Practice		
Assistant level role/s on public productions	Deputy level role/s on four to six public productions	Lead sound roles on public productions (if appropriate) including sound design work and mixing

DIPLOMA COURSE MODULES

TERM 1	TERM 2	TERM 3
Skills		
Pathway Studies 1 Pathway Studies 2	Research Project	Professional Development
Practice		
	Production Practice Industrial Placement Professional Practice 1	Professional Practice 2

2019/20 TERM DATES

Autumn: September – December
Spring: January – April
Summer: May – July

2019/20 FEES (FDA/BA)

UK/EU Students: £9,360
International Students: £17,165

(DIPLOMA)

UK/EU Students: £6,760



HOW TO APPLY

Entry is based on an interview at which you will be invited to talk about previous experience, interests and inspiration.

Application and interview information p83.



AUTOGRAPH

Training supported by
Autograph Sound Recording Ltd

FDA AND BA VALIDATED BY UNIVERSITY OF EAST ANGLIA DIPLOMA VALIDATED BY MOUNTVIEW

Fees are subject to annual review and may increase in years 2 and 3 in line with inflation. One term's notice will be given of any increases.

OTHER COSTS

Additional costs include a basic tool kit and personal protective equipment (boots, hard hat, gloves, reflective bibs) – allow around £250.

STAGE MANAGEMENT

FDA IN THEATRE PRODUCTION ARTS - STAGE MANAGEMENT

TWO YEARS **FULL-TIME**

BA (HONS) IN THEATRE PRODUCTION ARTS - STAGE MANAGEMENT

THREE YEARS **FULL-TIME**

MOUNTVIEW DIPLOMA IN THEATRE PRODUCTION ARTS - STAGE MANAGEMENT

ONE YEAR **FULL-TIME**

MOUNTVIEW PRODUCES AROUND 26 PLAYS AND MUSICALS IN THEATRES ACROSS LONDON EACH YEAR GIVING STAGE MANAGEMENT STUDENTS A VAST ARRAY OF LEARNING EXPERIENCES

Our vocational, hands-on course has seen graduates go on to be Deputy Stage Manager for New Adventures/Matthew Bourne, Senior Stage Manager at the London Olympics and Assistant Stage Manager on *Matilda The Musical*.

We offer three training levels: a two-year Foundation Degree (FdA) which provides a fast-track training and a three-year BA (Hons) with greater experience. For further study there is a one-year Mountview Diploma in Theatre Production Arts specialising in stage management.



Our practical training runs over 30 hours per week, 36 weeks per year. It begins with workshops covering core skills in all areas of production arts with training from experienced industry professionals. Students then move quickly on to practical show roles in stage management.

- Co-ordination and project management
- Cueing to music
- Prop making and sourcing
- Stage managing musicals, Shakespeare and new writing
- Working at some of London's leading West End theatres

Stage Management training covers:

- Prompt book and show calling
- Creative research including period-specific work
- Working with pyrotechnics and blank-firing weapons

Strong emphasis is placed on learning through practice. There is continuous assessment across all the compulsory modules. Assessment is based on coursework covering the skills elements of the course and marking of practical show roles.

FDA/BA COURSE MODULES AND COMPONENTS

YEAR 1	YEAR 2	YEAR 3 - BA (HONS) ONLY
Skills		
Introduction to key practical & research skills	Masterclasses & advanced technical lessons further developing key skills	Professional development: career planning, websites, CV writing, mock interviews & work placements
Production skills: lighting, sound, stage management & applied arts	Professional career development	Specialist practical research project
Scenography & applied practice	Work placed learning (FdA only)	
Professional career development		
Practice		
Assistant level role/s on public productions	Deputy level roles on four to six public productions	Lead roles on public productions

DIPLOMA COURSE MODULES

TERM 1	TERM 2	TERM 3
Skills		
Pathway Studies 1	Research Project	Professional Development
Pathway Studies 2		
Practice		
Assistant level roles on public productions	Deputy level roles on public productions	Lead level roles on public productions

FDA AND BA VALIDATED BY UNIVERSITY OF EAST ANGLIA DIPLOMA VALIDATED BY MOUNTVIEW

2019/20 TERM DATES

Autumn: September – December
Spring: January – April
Summer: May – July

2019/20 FEES (FDA/BA)

UK/EU Students: £9,360
International Students: £17,165

(DIPLOMA)

UK/EU Students: £6,760



HOW TO APPLY

Entry is based on an interview at which you will be invited to talk about previous experience, interests and inspiration.

Application and interview information p83.

Fees are subject to annual review and may increase in years 2 and 3 in line with inflation. One term's notice will be given of any increases.

OTHER COSTS

Additional costs include a basic tool kit and personal protective equipment (boots, hard hat, gloves, reflective bibs) – allow around £250.





ADMISSIONS AND APPLICATIONS

Mountview is committed to offering training to people from a wide variety of backgrounds.

To reflect this our admissions policy is focused on performance at audition or interview rather than on academic qualifications. The process is designed to explore your current and potential abilities, and your suitability for a career in the profession.

Auditions and interviews are open to students who will be 18 or over (Foundation and Undergraduate courses) or 21 and over (Postgraduate courses) at the time of course entry.

Students applying from overseas may submit a DVD for their first round audition or interview via Skype. All BA performance candidates will be expected to attend final round auditions at Mountview.

Early application is advised. To apply, for details of deadlines, audition/interview dates and requirements visit mountview.org.uk/applying

LONDON AUDITIONS

At Mountview we believe passionately that you can't spot a student's real potential through just a three-minute monologue or song. You've taken the time to apply and prepare and we want to see you at your best. Therefore at first round performance auditions at Mountview in Peckham you will be with us for the full day. You will take part in classes and meet students and tutors as well as performing your audition pieces.

UK-WIDE AUDITIONS

We understand that traveling to London for auditions can be expensive. Therefore we hold first round performance auditions in cities across the UK including Swansea, Bristol, Birmingham, Belfast, Edinburgh and Newcastle. These include warm-ups, Q&As and panel auditions. Unfortunately due to space and time constraints we are unable to offer workshops at these auditions. If however you are invited to recalls you will come to Mountview for a full day's experience.

FEE

At £45 Mountview's audition fees are among the lowest nationally and we offer a number of free places for students unable to afford the cost. There are no fees for interviews for Theatre Production Arts, Creative Producing, Musical Direction, Site-Specific Theatre Practice, Theatre for Community and Education or Theatre Directing courses.

AUDITIONS AND INTERVIEWS

FOUNDATION

ACTING

You will take part in a movement/improvisation workshop and present classical and contemporary monologues (see Undergraduate Acting/Actor Musician for monologue criteria). There will also be an informal interview.

MUSICAL THEATRE

During the morning session you'll take part in acting, singing and dance auditions (see Undergraduate Musical Theatre for song selection and dance audition format and Undergraduate Acting/Actor Musician for monologue criteria).

You may be invited to stay on for the afternoon to take part in a further round of acting and singing workshops and an interview.

UNDERGRADUATE

ACTING/ACTOR MUSICIAN

You will take movement and improvisation workshops, demonstrating your ability to think creatively, as well as performing your prepared monologues and spending time with current students getting the inside track on what life and study is like at Mountview.

You are asked to prepare a monologue from a play written after 1997 and a classical speech in verse (not prose) that was written prior to 1800.

This may be from Shakespeare or from Elizabethan, Jacobean, Ancient Greek, Roman, Restoration or international equivalent periods. We are interested in seeing you perform a dramatic speech with complex language that is character led. If you are selecting a play in translation please ensure that it is written in verse and remains poetic rather than choosing a modern adaptation that simplifies the form and content. **You may choose a speech from either gender.**

Actor Musicians must also prepare two contrasting pieces (of any genre) on your preferred instrument/s.

We invite a limited number of candidates back for second round auditions. These include further workshops and panel auditions. Further details about recalls will be provided at your audition.

MUSICAL THEATRE

You will take part in a dance class, starting with a full-body warm up and corner exercises before learning and performing a short jazz/modern dance routine. You will also perform one of your chosen songs and speeches. We always see all three disciplines – singing, acting and dance – as we think this is imperative in order to see your potential as a musical theatre actor.

Please prepare classic and contemporary monologues following the same criteria as the Acting/Actor Musician auditions.

You are asked to prepare two contrasting songs. These can either both be from musicals or one can be from a musical and one from a genre of your choice. Please note that songs must allow you to show two contrasting vocal approaches, one of which should be the more classical style associated with musical theatre.

The six volumes of The Singer's Musical Theatre Anthology provide excellent selections and can be downloaded for free, but you may choose work from any musical.

We invite a limited number of candidates back for second round auditions. These include further workshops and panel auditions. Further details about recalls will be provided at your audition.

SCENIC ART AND PROP MAKING / THEATRE PRODUCTION ARTS

You will visit Mountview for a half-day of workshop experiences. As part of this there is a short interview at which you can talk about your production arts experience. There is no application fee.

POSTGRADUATE ACTING

You will take part in a morning of movement/improvisation workshops and present classic and contemporary monologues (see Undergraduate Acting/Actor Musician). There is a recall audition on the same day with selected candidates invited to stay on for further workshops, monologue sessions and an interview in the afternoon.

MUSICAL THEATRE

You will have a morning of singing, acting and dance auditions (see Undergraduate Musical Theatre for song and speech criteria). Select candidates are asked to stay for second round auditions and an interview in the afternoon.

CREATIVE PRODUCING/THEATRE DIRECTING/ MUSICAL DIRECTION/SITE-SPECIFIC THEATRE PRACTICE/ THEATRE FOR COMMUNITY AND EDUCATION

You will be invited to Mountview for an interview with the Head of Course at which you will discuss your previous experience, interests and influences. Some courses require a portfolio of work. There is no application fee.

FEES AND FUNDING

We understand that securing funding can be difficult. Our Registry team can offer advice on the various paths available, please email admissions@mountview.org.uk

DANCE AND DRAMA AWARDS

Dance and Drama Awards (also known as DaDAs) are scholarships offering income-assessed support for course fees and living expenses and are given to students thought most likely to succeed in the profession. Only students taking an approved Trinity College London Diploma are eligible to apply for a DaDA and students wishing to apply will need to complete a form outlining their and their parents'/guardians' financial details. Students completing a diploma are, subject to assessment and a fee payment of £505*, eligible to complete a BA (Hons) in Performance.

For further information about the awards and eligibility, visit gov.uk/dance-drama-awards

*rate as of 2018

STUDENT LOANS

Undergraduate students studying at Mountview and who are not in receipt of a Dance and Drama Award are eligible to apply to the Student Loans Company for support. Full-time students can apply for tuition fee and maintenance loans. However please note the student loan does not cover the whole tuition fee, visit gov.uk/student-finance

Postgraduates can apply for Career Development visit gov.uk/career-development-loans and Postgraduate Loans, visit gov.uk/postgraduate-loan

SCHOLARSHIPS

The Watermill/Mountview Bursary is available to Actor Musician students and covers 50% of the course fees for three years. It is awarded based on talent and financial need but does not include a maintenance grant.

The Andrew Lloyd Webber Foundation Scholarship covers full fee for one BA (Hons) in Musical Theatre student. Eligible students are invited to audition.

The Peter Coxhead Bursary is available for FdA and BA (Hons) students in Theatre Production Arts and provides two students a bursary of £3,250 per year towards course fees for three years. This bursary is based on financial need.

Further scholarships are confirmed during the audition process. Mountview students are also able to apply for a number of scholarships during their time of study including the Lilian Baylis Award, Ian Fleming Award and Laurence Olivier Bursary as well as for support from the Sir John Gielgud Charitable Trust.

For more information about funding, loans and scholarships, visit mountview.org.uk/applying

ACCOMMODATION

We work with Unite Student Accommodation to provide halls of residence for Mountview students.

Bernard Myers Hall is a 20-minute walk from Mountview's new home and has 123 self-catering rooms. Flats of six/eight ensuite rooms share a kitchen/dining space. There are also two self-contained studio flats. Rates are around £190 per week and include wifi and utilities.

There is also a range of shared student housing options in Peckham and south east London. The cost of shared housing can vary, starting from around £500 per month excluding bills.

Peckham is incredibly well connected by public transport making travel from neighboring areas such as New Cross, Elephant and Castle, Catford and South Bermondsey very easy.

Please note rooms and rates for Bernard Myers Hall are subject to availability and will be confirmed in Spring 2019.



NOTABLE ALUMNI

Mountview alumni include Artistic Director of the Donmar Warehouse Michael Longhurst, Artistic Director of Hampstead Theatre Ed Hall, 2018 Olivier Award winner Giles Terera (*Hamilton*), 2017 Olivier Award winner Rebecca Trehearn (*Show Boat*), 2017 Evening Standard Award winner Tyrone Huntley (*Jesus Christ Superstar*) and Eddie Marsan, Lindsey Coulson, Ken Stott, Douglas Henshall and Mina Anwar.

Maria Aberg
Kelly Adams
Simbi Akande
Paul Anderson
Mina Anwar
Julie Atherton
Brontë Barbé
Glynis Barber
Callum Blue
Alecky Blythe
Rikki Chamberlain
Lois Chimimba
Joanna Christie
Lindsey Coulson
Brendan Coyle
Josh Dallas
Tim Downie
Tim Dutton
Sally Dynevor
Justin Edwards
Akintunde Esuruoso
Michael Fentiman
Connie Fisher

Michael French
Joseph Gatt
Don Gilet
Edward Hall
Douglas Henshall
Helen Hobson
Amanda Holden
Nick Holder
Jim Howick
Tyrone Huntley
Leanne Jones
Iqbal Khan
Ayub Khan Din
Emma Kingston
Beverley Klein
Ashley Kumar
Leigh Lawson
Perryn Leech
Michael Longhurst
Charlotte Loughnane
Eddie Marsan
Rhona Mitra
Nick Moran

Joe Murphy
Anna-Maria Nabirye
Asan N'Jie
Jack North
Craig Parkinson
Kane Oliver Parry
Laura Pitt-Pulford
Dan Poole
James Powell
Kelly Price
Matt Rawle
David Seadon Young
Matthew Seadon Young
Cleve September
Sharon Small
Rhashan Stone
Ken Stott
Giles Terera
Emily Tierney
Oliver Thornton
Rebecca Trehearne
James Tucker
Annette Yeo

RECENT GRADUATE DESTINATIONS

Almeida Theatre
Arcola Theatre
Book of Mormon
Bush Theatre
Chichester Festival Theatre
Clwyd Theatr Cymru
Curve, Leicester
Donmar Warehouse
ENO
Gate Theatre
Glasgow 2014 Commonwealth
Games
Hamilton
Headlong Theatre Company
Kinky Boots

Leeds Playhouse
Les Misérables
London 2012 Olympics &
Paralympics
Mamma Mia!
Manchester International
Festival
Manchester Royal Exchange
Menier Chocolate Factory
Michael Grandage Company
National Theatre
National Theatre of Scotland
National Theatre of Wales
Octagon Theatre Bolton
Old Vic

Open Air Theatre Regent's Park
Phantom of the Opera
Royal Court Theatre
RSC
Shakespeare's Globe
Sheffield Crucible
Sochi 2014 Winter Olympics
Sony Creative
Southwark Playhouse
Theatre Royal Stratford East
Union Theatre
Welsh National Opera
Wicked
Young Vic

BOARD OF TRUSTEES

Vikki Heywood CBE (Chair)

Chair of 14-18 NOW and the RSA. Vikki was Executive Director of the Royal Shakespeare Company from 2003 to 2012 and formerly Joint Chief Executive of the Royal Court Theatre. She recently led the Warwick Commission on the Future of Cultural Value.

Sir Brendan Barber

Chairman of Acas and General Secretary of the TUC from 2003 – 2012. A Visiting Fellow at the Said Business School, Oxford University, Sir Brendan was knighted in the 2013 Birthday Honours for services to employment relations.

Dame Colette Bowe

Dame Colette has worked in Whitehall and the City. She is Chairman of the Banking Standards Board and the Associated Board of the Royal Schools of Music.

Lady Susan Chinn

Lady Susan is a former Public Relations Consultant for Edelma. She is a Trustee of The Silver Line and was a volunteer at Great Ormond Street Children's Hospital for several years working in a day unit for children under five with cerebral palsy. Susan was Chair of the Development Council and a Board member of the National Theatre for 10 years.

Laura Gander-Howe

Laura is Director of Public Engagement and Culture at London College of Fashion, University of the Arts London. She was previously National Director of Children and Young People and Learning for Arts Council England.

Arian Mirzaali

Arian is the graduate representative to Mountview's Board having graduated in 2016 with a BA (Hons) in Acting. His professional credits include *Doctor Who* (BBC), *The Village* (Theatre Royal Stratford East) and *Artemis Fowl* (Disney).

Andrew Parker

Andrew is Bursar of Somerville College, Oxford and was formerly Director of Finance and Administration at the RSC.

André Ptaszynski

Andre is Producer of *Groundhog Day* and *Matilda the Musical*. He was Chief Executive of the Really Useful Group from 2005 to 2011. He is a Past President of Society of London Theatres and a former Trustee of the National Theatre.

Paul Roberts OBE

Chair of Innovation Unit board of directors, Paul was previously Managing Director of the Improvement and Development Agency (IDeA) for local government.

Johnson Situ

Johnson is Cabinet Member for Growth, Development and Planning at Southwark Council. He was born and raised in Peckham where he serves as a Labour councillor.

Patrick Spottiswoode

Patrick joined Shakespeare's Globe in 1984 and became Founding Director, Globe Education in 1989. He is an Honorary Fellow of King's College, London.

Ben Sumner

Ben is Director of Technical Theatre at the Guildhall School of Music and Drama and a Senior Fellow of the Higher Education Authority. In 2015 he was made a National Teaching Fellow.

Giles Terera

Giles trained at Mountview. His career includes *Candide*, *Troilus and Cressida*, *Hamlet* and *Honk* (National Theatre). He was in the original casts of *Avenue Q* and *Book of Mormon*. In 2017 he originated the role of Aaron Burr in the London production of *Hamilton*, for which he won the 2018 Olivier Award for Best Actor in a Musical.

Vincent Wang

An architect/developer, Vincent was a founder member of Stanhope Properties Plc. He was previously Chair of Hampstead Theatre and managed a major capital development project for the Donmar Warehouse.

STAFF

Principal & Artistic Director Stephen Jameson
Executive Director Sarah Preece
Chief Operating Officer Jeremy Smeeth
Director of Academic Affairs & Head of Undergraduate Performance Sally Ann Gritton
Commercial Director Matthew Turnbull
Venue & Estates Director Andy Franks
Executive Assistant Amy Lockley

Head of Acting Steve Grihault
Head of Creative Producing
Pam Fraser Solomon
Head of Dance Aaron Francis
Heads of Movement
Meredith Dufton · Ruth Naylor-Smith
Head of Music Lyndall Dawson
Heads of Postgraduate Performance
Sherrill Gow · Merryn Owen
Head of Screen Acting & Recorded Media
Stuart Parkins
Head of Site-Specific Theatre Practice
Geraldine Pilgrim
Head of Singing Martin Leberman
Head of Theatre for Community and Education
Iain Tidbury
Head of Theatre Directing Peter James CBE
Head of Voice Cath Baxter

Senior Acting Tutors Carol Harvey · Dan Herd
Senior Dance Tutor Grace Harrington
Senior Movement Tutor Martin Coles
Senior Music Tutor Nicholas Chave
Senior Singing Tutor Marco Morbidelli
Senior Voice Tutors
Sterre Maier · Lottie Williams-Burrell

Head of Production Arts Geraint Pughe
Head of Design & Applied Arts Alison Taylor
Head of Lighting & Sound Gareth J. Evans
Head of Stage Management Helen Barratt

Production Managers
Sarah Barton · Oliver Savidge
Senior Stage Management Tutors
Ella Bolton · Martin Hope
Senior Sound Tutor Robin Nash
Senior Scenic Art Tutor Clare Jose
Senior Prop Making Tutor Aurelie Clark

Deputy Scenic Construction Manager
Tom Barnett
Interim Deputy Scenic Construction Manager
Milo McGrath
Wardrobe Manager Kate Page
Wardrobe Supervisors
Rachael Higham · Rachel Perry
Lighting & Sound Assistant Amauri Crepaldi
Stage Management Assistant Hannah Swindell

Head of Short Courses Eddie Gower
Short Courses Co-ordinator Annie Hodson

Senior Programme Manager Kathy Allman
Industry Liaison Manager Neil Rutherford
Programme Manager Becky Shaw
Student Welfare Manager Amy Barber
Student Services Assistant Maame Atuah
Academic Quality Administrator Alice Warby

Academic Registrar Karen Kingston
Registry Manager Harriet Tabley
Admissions Administrator Alice Moore
Registry Assistant Michaela Carberry

Head of Press & Marketing Tessa Gillett
Box Office Manager Liz Wheeler
Company Manager Angela Riddell
Design & Website Manager Chi-Zeng Nim
Sales Development Manager Matt Noble
Marketing Assistant Alister Dunk

Campaign Director Nicky Jones
Development Manager Clare McCulloch
Development Officer Julia Mucko

Interim Management Accountant Niyi Ogunsola
Financial Controller Adekemi Adebayo
HR Administrator Alistair Owen

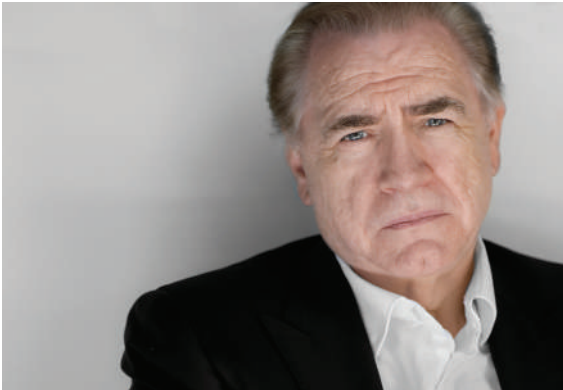
Venue Manager George Moustakas
Duty Manager Sam Beal
Interim Resources Manager Bethany Davies
Facilities Manager Steve Baker
Deputy Facilities Manager Mirko Valli
Venue Assistant Tom Walker
Night Security Barry De La Bertouche

Librarian Anthony Teague
Library Officers Robert Wells · Alix Robinson

ARTISTIC ASSOCIATES

Maria Aberg *Director*
Annabel Arden *Actor and director*
Paul Arditti *Sound designer*
Neil Austin *Lighting designer*
Alecky Blythe *Playwright*
Paul Clay *Producer*
Lindsey Coulson *Actor*
Brian Cox CBE *Actor*
Martin Duncan *Director*
David Edelstein *Theatre mechanics producer*
Alasdair Flint *Theatrical chandler*
Howard Goodall CBE *Composer*
Rob Halliday *Lighting designer*
Douglas Henshall *Actor*
Amanda Holden *Actor and presenter*

Stephen Jeffreys *Playwright*
Terry Johnson *Director and playwright*
Kwame Kwei-Armah OBE *Actor, playwright and director*
Leigh Lawson *Actor and director*
Twiggy Lawson *Model and actor*
Eddie Marsan *Actor*
Elaine Paige OBE *Actor*
Michael Pennington *Actor*
Tom Piper OBE *Designer*
Ken Stott *Actor*
Sarah Travis *Orchestrator and musical supervisor*
Roy Williams OBE *Playwright*
Anton Woodward OBE *Animatronics designer*



GUEST ARTISTS

Mike Alfreds
Analogue
Julie Atherton
Rachel Bagshaw
Max Barton
Robert Bathurst
Hedda Beeby
Simon Beck
Ned Bennet
Jo Blatchley
Nicky Bligh
Alecky Blythe
Kate Bone
Dan Bowling
John Brant
Matthew Brind
Tom Brooke
Jonathan Butterell
Marina Caldarone
Topher Cambell
Richard Cant
Jason Carr
Paul Clarkson
Brian Cox CBE
Rosalie Craig
Tinuke Craig
Stephen Crockett
Alistair David
Dame Judi Dench
Monica Dolan
Maxine Doyle
Stella Duffy
Martin Duncan
Jan Dunn
Isabelle Dupres
Simon Dvorak
George Dyer
Mike England

Roger Evans
Sir Richard Eyre
Stella Feehily
Hadley Fraser
Rebecca Frecknall
Toby Frow
Abigail Graham
Jimmy Grimes
Carol Harvey
Tamara Harvey
Joanne Harris
Katie Henry
Jim Henson
Kit Hesketh-Harvey
Paul Hewitt
Jonathan Holloway
Kelly Hunter
Nick Hutchison
Trevor Jackson
Andrew Jarvis
Hannah Joss
Fiona Keddie-Ord
Dennis Kelly
Max Key
Russell Labey
Antony Lau
Darren Lawrence
Jason Lawson
Mike Leigh
Caroline Leslie
Nigel Lilley
Tim Luscombe
Anders Lustgarten
Steve Marmion
James McConnel
Hannah Miller
Tim Minchin
Mischief Theatre

Stuart Morley
Supple Nam
Deborah Paige
Elaine Paige OBE
Craig Parkinson
Michael Pennington
Perfect Pitch
Peter Polycarpou
James Powell
Mark Ravenhill
Nadine Rennie
Philip Ridley
Ferdy Roberts
Ashley Robinson
Adam Rowe
Jenna Russell
Matt Ryan
Simon Scardifield
Josh Seymour
Showstoppers
Duke Special
Max Stafford-Clark
Ed Stambollouian
Michael Strassen
Imogen Stubbs
Jessica Swale
Danielle Tarento
Sarah Travis
Guy Unsworth
Zubin Varla
Rachel Wagstaff
Barnaby Welch
Charlotte Westenra
Jen Whyte
Roy Williams OBE
Robin Winfield-Smith
Abbey Wright
Jared Zeus



MADE AT MOUNTVIEW



Made at Mountview is our new writing programme through which students work with leading writers, composers and directors to create new work.

Understanding the collaborative process is a vital part of training and provides students with professional development opportunities and an insight into how to create their own work.

Previous projects have included *The Martyr* by Rachel Wagstaff and Matt Brind which was directed by Steve Marmion at Soho Theatre, *Yusupov* by Kit Hesketh-Harvey and James McConnel, *Karagula* by Philip Ridley directed by Max Barton at Shoreditch Town Hall, *Buster's* by Roy Williams, *Hoods* by Chris Blackwood, Shirley Jameson and Drew Jaymson and *Fanatical* by Matt Board and Reina Hardy. In 2016 Mountview developed and premiered *Lockhart* by Ashley Robinson and Jason Carr.

Most recently, Mountview commissioned *Gidea Park* by Dan Murphy and a pair of one-act plays *Trenches* and *Parlour Games* (pictured above) by Richard Vincent and James Hartnell.

PHOTO CREDITS

All photos © John Hunter at RULER thisruler.net except headshots and:

© Sheila Burnett pp56/58

© Darc Studios pp17

© Max Lacombe pp22/24

© Katherine Leedale pp7/30/34/52/66/72/74/78/80/87/93/94

© Robin Savage pp28/48/54/62/68/70/76

© Robert Workman pp37/42

This prospectus is available in large font formats if required. Please email admissions@mountview.org.uk

Mountview provides creative vocational training for actors, directors, producers and theatre production artists.

Training may involve working with a play, musical or other text that has a challenging subject matter, that questions orthodoxy or requires physical engagement or actions. Students must be prepared to engage with the material and present it in workshop and/or public performances. By accepting a place at Mountview students are confirming their acceptance of this policy.

This is a guide to Mountview and its courses. It does not constitute a contract between Mountview and its students.

For fuller details of courses visit mountview.org.uk or consult course handbooks. Mountview will inform students of changes to courses, their structure and content, teaching staff and facilities.

In the unlikely event that a force majeure results in Mountview having to close no compensation or return of fees is payable.

Courses are subject to external accreditation/validation and are provided on the assumption that this accreditation/validation will continue.

Mountview has taken every effort to ensure that photography in this prospectus is correctly credited.

© 2018 Mountview

Registered Charity No: 274166 · Incorporated in England No: 01019858

Registered Office: 120 Peckham Hill Street, London SE15 5JT

mountview.org.uk