

**MOUNTVIEW**

# Mother Clap's Molly House

Written by **Mark Ravenhill** with music by **Matthew Scott**



Directed by **Philip Engleheart** - Musical Director **David Keefe**

Movement Direction by **Emily Holt** - Set and Costume Design by **Dora Schweitzer**

Lighting Design by **Mark Dymock** - Sound Design by **Michael Livermore**

Performed by **Mountview's Third Year Musical Theatre students**

Technical Roles by **Mountview's Theatre Production Arts students**

**23 - 26 June 2021** Backstage Theatre, Peckham



Photo by RULER

## ABOUT MOUNTVIEW

Excellence, Access and Innovation in dramatic training are at the heart of our work. Since 1945, we have trained the very best performers, directors, theatre production artists and producers. We are committed to ensuring our community of over 500 students is representative and that drama training is accessible to all.

Opened in 2018, our home in Peckham was conceived in partnership with Southwark Council as a truly 21st-century drama school and a creative arts hub for all. Our state-of-the-art facilities include the 200-seat Mountview Theatre (made possible by a £1m donation from Sir Cameron Mackintosh), the 80-seat Backstage Theatre, 21 acting/dance studios, TV and radio suites and production workshops. In recognition of their extraordinary work in establishing Mountview's new home and for their commitment to promoting inclusivity, Joint Chief Executives Stephen Jameson and Sarah Preece were presented with Olivier Awards in 2020.

Shortlisted for the RIBA London Regional Awards and Stage Awards Theatre Building of the Year, our new home is not only a vital resource for our students, but also an emerging centre of excellence for accessibility in the arts. Our fully accessible building is home to leading disability arts practitioners Candoco Dance Company amongst a number of other resident professional companies.

Today's students will join a constellation of graduates making their mark on the profession. Actor Noah Thomas (*Everybody's Talking About Jamie*), Actor/Writer Amy Trigg (winner, inaugural Women's Prize for Playwriting 2020), Olivier Award-winning Actor/Writer Giles Terera MBE (*Hamilton*) and Michael Longhurst, Artistic Director of the Donmar Warehouse are just a few of our notable alumni.



**THE STAGE**

The Backstage Theatre was made possible by the generosity of Lady Susie Sainsbury and the Backstage Trust. It is named in honour of their extraordinary founding gift in support of Mountview's new home. Susie understood and committed to the vision of a new Mountview in Peckham from the outset, and we will always be deeply grateful to her for championing the project and supporting the next generation of performers and theatre makers at Mountview.

**BACKSTAGE  
THEATRE**



## Judi Dench Fund

— FOR ACCESS TO DRAMA TRAINING —

### THE JUDI DENCH FUND

We believe that all young people with the talent and drive to succeed should be supported to pursue lifelong careers in the arts.

The Judi Dench Fund for Access to Drama Training invests in initiatives that break down barriers to drama training, including a nationwide talent scouting network, scholarships, hardship grants and wellbeing and welfare support.

Like charities everywhere, Mountview is facing unprecedented challenges and the Judi Dench Fund has never been more vital. Financial need amongst students is at an all-time high and help at this critical moment could make the difference between a young artist flourishing and being unable to sustain themselves through their training.

If you enjoy this performance, please consider donating what you would have paid for a ticket. Together we can directly alter the prospects of young people at a pivotal moment in their lives.

### THANK YOU

Mountview extends a sincere thank you to the individuals and organisations who generously support our work, including the following major donors,

**The Mackintosh Foundation**

**The Backstage Trust**

**Southwark Council**

**The Leverhulme Trust**

**Sir Trevor and Lady Susan Chinn**

**André and Judith Ptaszynski**

**Mr Peter Williams and Ms Heather Acton**

**Andrew Lloyd Webber Foundation**

**Elaine Paige OBE**

**Mr Jamie Lonsdale**

**Sir Clive Jones and Dame Vikki Heywood**

**Scops Arts Trust**

**Noël Coward Foundation**

**Harold Hyam Wingate Foundation**

**The Arts Society Greater London Area**

*And those who wish to remain anonymous.*

To make a gift or find out more, we warmly invite you to visit our [website](#) or [get in touch](#) with the Development team. Thank you.



'Mountview was the only school willing to give someone like me a chance. I was going through the homeless system when I applied and I thought going to drama school was going to be an impossible mission, but then Mountview offered me a place and a full scholarship - it changed my life. Knowing the Judi Dench Fund will help future students in my position is amazing.'

**CHARLIE HEPTINSTALL**

*BA (Hons) Performance - Acting 2020 graduate*



Photo by RULER

Skipping between an 18th century Molly house and a group of men planning a raunchy party in 21st century Shoreditch, *Mother Clap's Molly House* is a riotous celebration of the diversity of human sexuality, and a comment on the commodification of sex and love.

The play was first performed at the National's Lyttleton Theatre on the 4th September 2001 and at the Aldwych Theatre on the 8th February 2002. The play was commissioned and presented in a workshop production by the London Academy of Music and Dramatic Arts in February 2000.

DURATION 120 MINUTES

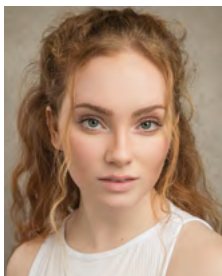
## CAST

KATIE  
COCHRANE



Amy

LAUREN  
CONROY



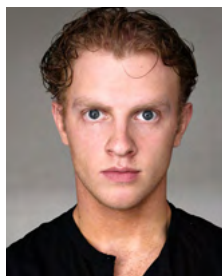
Mrs Tull

TYLER  
DAVIS



Kedger • Charlie

JACK  
GARDNER



Thomas Orme • Josh

DANIEL  
HARRIOTT



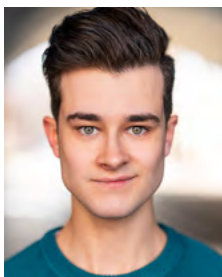
Stephen Tull •  
Edward

KAINE  
LAWRENCE



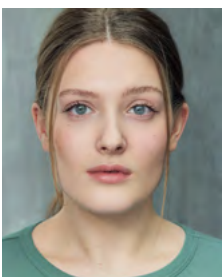
Princess Seraphina

DEAN  
MAKOWSKI-CLAYTON



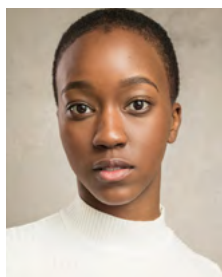
Eros • Ensemble

ELLAN  
MANGHAM



Mary Bolton

SADI  
MASEGO



Amelia

NATHANIA  
ONG



Tina • God

AYESHA  
PATEL



Mary Cranton

JACK  
POWELL



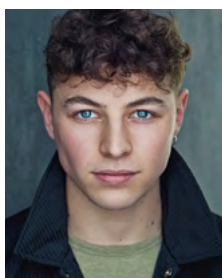
Philips • Will

IVERSON  
YABUT



Martin • Tom

JACOB  
YOUNG



Gabriel Lawrence •  
Phil

# PRODUCTION

**DIRECTOR**  
PHILIP ENGLEHEART

**MUSICAL DIRECTOR**  
DAVID KEEFE

**MOVEMENT DIRECTOR**  
EMILY HOLT

**CAMERA DIRECTOR**  
GAVIN HALES

**SET & COSTUME DESIGNER**  
DORA SCHWEITZER

**LIGHTING DESIGNER**  
MARK DYMOCK

**SOUND DESIGNER**  
MICHAEL LIVERMORE

**VOICE COACH**  
LAURA NEEL

**ASSISTANT DIRECTOR**  
ANDREW O'REILLY \*

**PRODUCTION MANAGER**  
DAVIN PATRICK

**COMPANY MANAGER**  
ANGELA RIDDELL

**ASSISTANT PRODUCTION MANAGER**  
FRANCESCA MCEWEN †

**STAGE MANAGER**  
HOLLY-SUE BUTLER †

**DEPUTY STAGE MANAGER**  
FRANCESCA MAI †

**REHEARSAL ASSISTANT STAGE MANAGERS** MELODY WRIGHT †  
CECILIE FRAY

**ASSISTANT STAGE MANAGERS**  
FRANCESCA MCEWEN †  
TOM NIGHTINGALE †  
MELODY WRIGHT †

**WARDROBE SUPERVISOR**  
MEGAN AYRTON

**PRODUCTION LX**  
CONOR THORNTON †

**PRODUCTION SOUND ENGINEER**  
WAYNE HARRIS

**LIGHTING PROGRAMMER**  
JOSH ROONEY-WALKER †

**SOUND NO. 1**  
BEN SMITH

**SOUND NO. 2**  
ALEX DUCKWORTH

**SOUND NO. 3**  
DOMINIC DIENST

**LEAD SCENIC ARTIST**  
ELLIE PITT

**LEAD CARPENTER**  
TOM BARNETT

**DEPUTY LEAD CARPENTER**  
EMMA HAYWARD

**VISION MIXER**  
CHLOE LANGRIDGE †

\* MA Theatre Directing student

† Theatre Production Arts student

# BAND

**REEDS**  
HANNAH LAWRENCE

**GUITARS**  
ALEX MENAKER

## THANKS TO

AUTOGRAPH SOUND RECORDING  
WHITE LIGHT LTD  
BRUCE CHAMBERS  
SIMON HARRISON  
MURRAY HIPKIN  
OSKAR MARCHOK  
JOOLS OSBORNE  
THE PINK SINGERS

### PHILIP ENGLEHEART *Director*

Philip is an artistic associate at Mountview where he directed the musical *Ruthless* and designed *Romeo and Juliet* directed by Stephen Jameson and was involved in the development of the interiors for the new Peckham site. He is a multi-disciplinary theatre practitioner having worked as an actor, director and predominantly as a designer. His work covers a broad range of genres including Devised theatre, Forum theatre, New writing, Puppetry, Mask and Musicals. He is a visiting practitioner at LAMDA, Central School of Speech and Drama and the Royal College of Music.

### DAVID KEEFE *Musical Director*

David is currently Children's MD on *Matilda the Musical*. Credits as MD include *Love is Only Love* (The Other Palace), *The Magic Flute* (Soho Theatre), *Tin* (Miracle Theatre) and UK premieres of *Thrill Me* and *A Catered Affair*. Other credits include: *Street Scene* and *The Human Comedy* (Young Vic), *The Woman in White* (Charing Cross Theatre), *Chitty Chitty Bang Bang* (UK tour) and *Salad Days* (Riverside Studios) as well as many education projects for the ROH, Holland Park and ETO.

### EMILY HOLT *Movement Director*

Emily's credits include: *The Suicide* (Storyhouse), *The Entertainer* (Leicester Curve/UK tour), *The Little Beasts* (The Other Palace). For The Watermill: *A Midsummer Night's Dream*, *The Wipers Times* (+UK tour/Arts Theatre), *Trial by Laughter* (+UK tour) and *House and Garden*. *The Mr Swallow Show: The Vanishing Elephant*, *Houdini*, *Dracula!* (Soho Theatre/Pleasance, Edinburgh). Screen credits: Feature Film *Tolkien* (Fox Searchlight Pictures), *Mr Swallow* TV pilot. LAMDA credits include: *Cabaret*, *Fiddler on the Roof*, *Spring Awakening*, *Bare* and *Earthquakes in London*. For Mountview: *Ruthless*.

### DORA SCHWEITZER *Set and Costume Designer*

Dora trained on the Motley Theatre Design Course and has designed over 90 productions. These include the premieres of two plays written by Ian Hislop: *The Wipers Times* (Watermill/The Arts Leicester Square/tour) and *Trial by Laughter* (Watermill/national tour). Most recently she designed *Stiletto Beach* in rep with *So Here We Are* (Queens, Hornchurch). Dora designed the sets and costumes for the first five tours and West End transfer of Jenny Eclair's *Grumpy Old Women Live* (Avalon).

### MARK DYMOCK *Lighting Designer*

Mark graduated from Croydon Art College and has designed numerous shows throughout the country and abroad. Credits include: *Once* (Regional premier tour), *Ken* (Terry Johnson/Hampstead), *House and Garden* (Watermill Theatre), *Clybourne Park* (Regional premiere tour), *Return to the Forbidden Planet* (25th Anniversary Tour), *Don't Look Now* (nominated for Offie Best Lighting Design - Queen's Theatre), *Betty Blue Eyes* (Regional premiere tour), Michael Morpurgo's *Butterfly Lion* (Kenwright), working with Willy Russell on *Educating Rita*, *Breezeblock Park* (Liverpool Playhouse) and *Shirley Valentine* (Royal Court Liverpool), *Farm Boy*, *The Hired Man*, *Kissing Sid James* (New York E59).

### MICHAEL LIVERMORE *Sound Designer*

Mick was born in Australia and has worked as a sound designer/composer all over the world. This has included work at the BBC, National Youth Theatre, and numerous No.1 touring productions. Mick was Director of Production Arts at Mountview Academy in Wood Green for four years, having worked previously as Sound Tutor and then Head of Sound. He is very much looking forward to working at the new premises and being a part of the bright future of the Academy.

## WARNING

We don't want to give away any spoilers for a show, but understand that some content may cause distress for audiences. If there are certain themes or content that you would find particularly upsetting, we encourage you to contact us before viewing to find out more about the show - please email [boxoffice@mountview.org.uk](mailto:boxoffice@mountview.org.uk).

*Mother Clap's Molly House* contains strong language, sexual content (including non-consensual activity), drugs, abortion and discrimination. Flashing light effects will be used.

COMING UP NEXT

Mountview by arrangement with Cameron Mackintosh presents

# KIPPS

## THE NEW HALF A SIXPENCE MUSICAL

Based on the H.G. Wells novel "KIPPS: The Story of a Simple Soul"  
and the original musical by BEVERLEY CROSS and DAVID HENEKER  
Original Songs by DAVID HENEKER Book by JULIAN FELLOWES  
New Songs and Additional Music and Lyrics by GEORGE STILES and ANTHONY DREWE  
Orchestrations by WILLIAM DAVID BROHN Co-created by CAMERON MACKINTOSH

MONDAY 5th - SATURDAY 10th JULY 2021

SIGN UP FOR OUR LATEST NEWS, [mountview.org.uk/keep-in-touch](https://mountview.org.uk/keep-in-touch)



[mountview.org.uk](https://mountview.org.uk)    @mountviewldn

UEA University of East Anglia

TRINITY COLLEGE LONDON

Southwark Council

FDS FEDERATION OF DRAMA SCHOOLS

CDMT Accredited School

AMTC ALLIANCE OF MUSICAL THEATRE CONSERVATORIES

President Dame Judi Dench CH DBE Principal & Artistic Director Stephen Jameson Executive Director Sarah Preece Chairman Dame Vikki Heywood DBE

Board of Directors Sir Brendan Barber · Lady Susan Chinn · Laura Gander-Howe · Trevor Jackson · Benjamin Lafayette · Andrew Parker · John Reiss · Cllr Johnson Situ  
Dame Rosemary Squire OBE · Giles Terera MBE · Artistic Associates Maria Aberg · Annabel Arden · Paul Arditti · Neil Austin · Alecky Blythe · Paul Clay · Aletta Collins · Lindsey Coulson  
Brian Cox CBE · Martin Duncan · David Edelstein · Philip Engleheart · Alasdair Flint · Howard Goodall CBE · Douglas Henshall · Amanda Holden · Terry Johnson · Akram Khan MBE  
Kwame Kwei-Armah OBE · Leigh Lawson · Dame Twigg Lawson · Eddie Marsan · Elaine Paige OBE · Michael Pennington · Tom Piper MBE · Indhu Rubasingham MBE · Liam Steel  
Ken Stott · Sarah Travis · Roy Williams OBE · Anton Woodward OBE

Registered Office, 120 Peckham Hill Street, London SE15 5JT · Registered Charity No, 274166 · Incorporated In England No, 01019858