



MOUNTVIEW

START

Written by **Toby Clarke** in Association with **Theatre Peckham Rep Company**

Directed by **Toby Clarke & Sean Hollands**

Original Music by **Tom Clarke** - Sound Design and Additional Music by **Roly Botha**
Movement Direction by **Sean Hollands** - Set and Costume Design by **Alfie Heywood**

Lighting Design by **Douglas Green** - Season Sound Design by **Beth Duke**

Performed by **Mountview's Third Year BA (Hons) Performance - Acting Students**

Technical roles by **Mountview's Theatre Production Arts students**

10 and 11 June 2021 Backstage Theatre, Peckham



Photo by RULER

ABOUT MOUNTVIEW

Excellence, Access and Innovation in dramatic training are at the heart of our work. Since 1945, we have trained the very best performers, directors, theatre production artists and producers. We are committed to ensuring our community of over 500 students is representative and that drama training is accessible to all.

Opened in 2018, our home in Peckham was conceived in partnership with Southwark Council as a truly 21st-century drama school and a creative arts hub for all. Our state-of-the-art facilities include the 200-seat Mountview Theatre (made possible by a £1m donation from Sir Cameron Mackintosh), the 80-seat Backstage Theatre, 21 acting/dance studios, TV and radio suites and production workshops. In recognition of their extraordinary work in establishing Mountview's new home and for their commitment to promoting inclusivity, Joint Chief Executives Stephen Jameson and Sarah Preece were presented with Olivier Awards in 2020.

Shortlisted for the RIBA London Regional Awards and Stage Awards Theatre Building of the Year, our new home is not only a vital resource for our students, but also an emerging centre of excellence for accessibility in the arts. Our fully accessible building is home to leading disability arts practitioners Candoco Dance Company amongst a number of other resident professional companies.

Today's students will join a constellation of graduates making their mark on the profession. Actor Noah Thomas (*Everybody's Talking About Jamie*), Actor/Writer Amy Trigg (winner, inaugural Women's Prize for Playwriting 2020), Olivier Award-winning Actor/Writer Giles Terera MBE (*Hamilton*) and Michael Longhurst, Artistic Director of the Donmar Warehouse are just a few of our notable alumni.



THE STAGE

The Backstage Theatre was made possible by the generosity of Lady Susie Sainsbury and the Backstage Trust. It is named in honour of their extraordinary founding gift in support of Mountview's new home. Susie understood and committed to the vision of a new Mountview in Peckham from the outset, and we will always be deeply grateful to her for championing the project and supporting the next generation of performers and theatre makers at Mountview.

**BACKSTAGE
THEATRE**



THE JUDI DENCH FUND

We believe that all young people with the talent and drive to succeed should be supported to pursue lifelong careers in the arts.

The Judi Dench Fund for Access to Drama Training invests in initiatives that break down barriers to drama training, including a nationwide talent scouting network, scholarships, hardship grants and wellbeing and welfare support.

Like charities everywhere, Mountview is facing unprecedented challenges and the Judi Dench Fund has never been more vital. Financial need amongst students is at an all-time high and help at this critical moment could make the difference between a young artist flourishing and being unable to sustain themselves through their training.

If you enjoy this performance, please consider donating what you would have paid for a ticket. Together we can directly alter the prospects of young people at a pivotal moment in their lives.

THANK YOU

Mountview extends a sincere thank you to the individuals and organisations who generously support our work, including the following major donors:

The Mackintosh Foundation
The Backstage Trust
Southwark Council
The Leverhulme Trust
Sir Trevor and Lady Susan Chinn
André and Judith Ptaszynski
Mr Peter Williams and Ms Heather Acton
Andrew Lloyd Webber Foundation
Elaine Paige OBE
Mr Jamie Lonsdale
Sir Clive Jones and Dame Vikki Heywood
Scops Arts Trust
Noël Coward Foundation
Harold Hyam Wingate Foundation

And those who wish to remain anonymous.

To make a gift or find out more, we warmly invite you to visit our [website](#) or [get in touch](#) with the Development team. Thank you.



'Mountview was the only school willing to give someone like me a chance. I was going through the homeless system when I applied and I thought going to drama school was going to be an impossible mission, but then Mountview offered me a place and a full scholarship - it changed my life. Knowing the Judi Dench Fund will help future students in my position is amazing.'

CHARLIE HEPTINSTALL

BA (Hons) Performance - Acting 2020 graduate



Photo by RULER

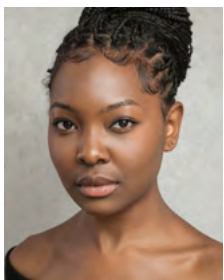
“Guys like me don’t get the benefit of the doubt, ya know. So when guys like me get accused, it sticks like fresh tar on road. Cos guys like me don’t get nothin’ else. And you wonder why guys like me don’t change? Maybe it’s cos guys like you don’t want us to. And it’s a shame.”

Ten young offenders from different boroughs are thrown together into a Community Theatre project, as part of their Youth Rehabilitation Orders. They don’t get on. A raw new play about perception, privilege and potential.

DURATION 150 MINUTES

CAST

DÉJA J.
BOWENS



Hope

TYRELL
BROWNE



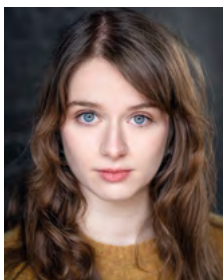
Eric

RICHARD
DOBSON



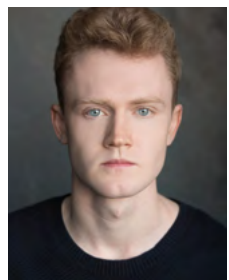
Alan

NIAMH
DRUMGOOLE



Kimberly

ELLIOT
GOODHILL



James

SHAHBAAZ
KHAN



Zaid

MONET
MARQUIS



Stella

TAYA
MING



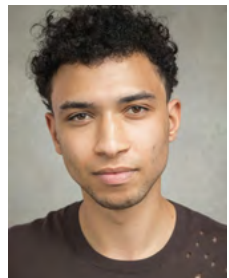
Kayla

KOJO
QUAINOO



Vin

JASPER
RYAN-CATER



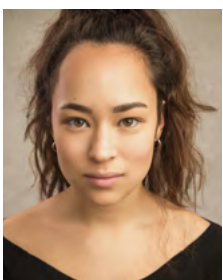
Terrence (Tempa)

MYLES
SEMBI



Charlie

MAIA
TAMRAKAR



Dylan

NAT
THOMAS



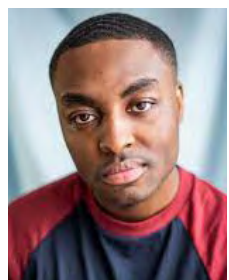
Jay

HARRY
VERDEN



Lewis

CHRISTIAN
ALIFOE ^Δ



Understudy Vin

^Δ guest artist

PRODUCTION

CO-DIRECTOR & WRITER

TOBY CLARKE

CO-DIRECTOR & MOVEMENT

DIRECTOR SEAN HOLLANDS

CAMERA DIRECTOR

GAVIN HALES

VISION DIRECTOR

EMILY DARLINGTON

SET & COSTUME DESIGNER

ALFIE HEYWOOD

LIGHTING DESIGNER

DOUGLAS GREEN

ORIGINAL MUSIC BY

TOM CLARKE

SOUND DESIGNER & ADDITIONAL

MUSIC BY ROLY BOTHA

SEASON SOUND DESIGNER

BETH DUKE

FIGHT CHOREOGRAPHER

MARCELLO MARASCALCHI

VOICE COACH

ESI ACQUAAH-HARRISON

ASSISTANT DIRECTOR

BECCA CHADDER **

ASSOCIATE LIGHTING DESIGNER

JAMIE PLATT

PRODUCTION MANAGER

ALYSHA LAVINIÈRE

COMPANY MANAGER

ANGELA RIDDELL

ASSISTANT PRODUCTION MANAGER

FRANCESCA MCEWEN †

STAGE MANAGER

OLIVIA RAE STONE †

DEPUTY STAGE MANAGER

SIÂN BUCKLEY-HUMPHRIES †

DSM MENTOR

NATHAN BABB

REHEARSAL ASSISTANT STAGE

MANAGER LILI FULLER †

ASSISTANT STAGE MANAGERS

SHANEICE BROWN †

ANNA MATTHIESEN †

WARDROBE SUPERVISOR

KATE PAGE

PRODUCTION LX

RUTH HARVEY †

ASSISTANT PRODUCTION SOUND

ENGINEER MATT GREED †

LX PROGRAMMER

COLIN EVERS DIJK †

LX NO. 3

JOSHUA ROONEY-WALKER †

ASSISTANT PROD. LX/LX NO. 4

EFA GREGORY †

SOUND NO. 1

ALEX DUCKWORTH

SOUND NO. 2

DOMINIC DIENST

SOUND NO. 3

ETHAN TRAYNOR †

SAM HARCOURT †

LEAD CARPENTER

TOM BARNETT

DEPUTY LEAD CARPENTER

EMMA HAYWARD

** Theatre Directing student

† Theatre Production Arts student

THANKS TO

AUTOGRAPH SOUND RECORDING

STATIC LIGHT COMPANY

TOBY CLARKE *Co-Director & Writer*

Toby has had an extensive 20-year career in theatre, TV and film as a director, playwright and acting coach. He recently directed the Olivier Award-nominated *Warheads* (Park Theatre). He is currently Resident Director at Theatre Peckham, Young Company Director at Stratford East and Head Acting Coach of the Young Vic's new Over 25 Acting Company. Toby will be directing Simon Stephens' *Punk Rock* (Theatre Royal Stratford East) in the summer. As a playwright, Toby has been long and shortlisted for the Bruntwood Prize. tobyclarke.com

SEAN HOLLANDS *Co-Director & Movement Director*

Sean Hollands is a director and movement director. He is the Co-Artistic Director of Fable Workshop, Co-Director of Children's Theatre Digital, a theatre practitioner for Frantic Assembly, and Associate of the National Youth Theatre. In 2019 he was movement director for the Olivier-nominated production of *Warheads*. He was the recipient of the Bryan Forbes Director Award in 2016 with the NYT. More information can be found at seanhollands.com

ALFIE HEYWOOD *Set and Costume Designer*

Alfie trained in Theatre and Performance Design at LIPA, graduating in 2016. Recent credits as Designer include: *Ellen and Rigby* and *Lost in Colomendy* (Liverpool's Royal Court), *Guys and Dolls* (Mountview), *Lord of the Flies* (Greenwich Theatre). *Unspoken Spoken* (Candoco Dance Company), *Omnibus* (Unity Theatre), *Crimes of the Heart* and *The Witches of Eastwick* (LIPA). Recent credits as Associate to designer Christopher Oram include: *Turn of the Screw* (Garsington Opera), *Bitter Wheat* (Garrick Theatre) and *Geisha* (Northern Ballet).

DOUGLAS GREEN *Lighting Designer*

Douglas is a lighting and production designer contributing to a wide variety of projects. Most recently with Apple, Jarvis Cocker, Solid Homme, Mysie, Gieves and Hawkes, Rolls Royce and Lady Gaga. Douglas is very excited to collaborate with Jamie Platt jamieplatt.com on this production of *START*. douglasgreen.design

ROLY BOTHA *Sound Designer & Composer*

Roly is a composer, sound designer, and actor. Music and sound credits for stage include the Olivier Award-nominated *Warheads* (Park Theatre), The PappyShow's award-winning *BOYS, GIRLS* and *CARE* (touring), *Helen* (Battersea Arts Centre), *Brother* (Southwark Playhouse), and *Start* (Theatre Peckham). Roly is an associate artist of The PappyShow.

BETH DUKE *Sound Designer*

Beth Duke is a theatre sound designer and composer. She is currently a resident Sound Designer at the Almeida Theatre. She was recently nominated for the Evening Standard & TikTok Future Theatre Creators Award as one of the top six audio designers in the UK. Credits include *J'ouvert* (Harold Pinter Theatre/BBC), *One Jewish Boy* (Trafalgar Studios/West End/UK tour), *Scenes with Girls*, *Living Newspaper* (Royal Court Theatre), *Deathdrop* (Garrick Theatre), *Reimagining* (Almeida Theatre), *New Views* (Dorfman Theatre/National Theatre). As associate - *A Midsummer Night's Dream* (Tobacco Factory), *Dust* (New York Theatre Workshop). Screen includes: *Gaïxia* [as sound recordist], *Hydrangea* [as composer], *Wistia* - *Show Business* [as SFX editor], BBC *J'ouvert* [as Sound Designer], VYNE advert [as SFX editor].

WARNING

We don't want to give away any spoilers for a show, but understand that some content may cause distress for audiences. If there are certain themes or content that you would find particularly upsetting, we encourage you to contact us before viewing to find out more about the show - please email boxoffice@mountview.org.uk.

START contains strong language and scenes depicting violence, threat, discrimination (including racism, homophobia, transphobia and sexism) and sexual assault.

COMING UP NEXT



SIGN UP FOR OUR LATEST NEWS: mountview.org.uk/keep-in-touch



mountview.org.uk    @mountviewldn

UEA University of East Anglia

TRINITY COLLEGE LONDON

Southwark Council

FDS FEDERATION OF DRAMA SCHOOLS

ICDMT Accredited School

AMTC ALLIANCE OF MUSICAL THEATRE CONSERVATORIES

President Dame Judi Dench CH DBE

Principal & Artistic Director Stephen Jameson

Executive Director Sarah Preece

Chairman Dame Vikki Heywood CBE

Board of Directors Sir Brendan Barber · Lady Susan Chinn · Laura Gander-Howe · Trevor Jackson · Benjamin Lafayette · Andrew Parker · John Reiss · Cllr Johnson Situ
Dame Rosemary Squire OBE · Giles Terera MBE · Artistic Associates Maria Aberg · Annabel Arden · Paul Arditti · Neil Austin · Alecky Blythe · Paul Clay · Aletta Collins · Lindsey Coulson
Brian Cox CBE · Martin Duncan · David Edelstein · Philip Engleheart · Alasdair Flint · Howard Goodall CBE · Douglas Henshall · Amanda Holden · Terry Johnson · Akram Khan MBE
Kwame Kwei-Armah OBE · Leigh Lawson · Dame Twigg Lawson · Eddie Marsan · Elaine Paige OBE · Michael Pennington · Tom Piper MBE · Indhu Rubasingham MBE · Liam Steel
Ken Stott · Sarah Travis · Roy Williams OBE · Anton Woodward OBE

Registered Office: 120 Peckham Hill Street, London SE15 5JT · Registered Charity No: 274166 · Incorporated In England No: 01019858