

MOUNTVIEW

RESTORED  
ROAR



A double bill

*The Roaring Girl* by **Thomas Dekker & Thomas Middleton**  
*The Beau Defeated* by **Mary Pix**

Directed by **Stephen Hudson** - Set and Costume Design by **Rhyannon Richardson**  
Lighting Design by **Mark Dymock** - Sound Design by **Matthew Giles**  
Performed by **Mountview's MA Performance** - Acting students

**25 - 28 August 2021** Mountview Theatre



Photo by RULER

## ABOUT MOUNTVIEW

Excellence, Access and Innovation in dramatic training are at the heart of our work. Since 1945, we have trained the very best performers, directors, theatre production artists and producers. We are committed to ensuring our community of over 500 students is representative and that drama training is accessible to all.

Opened in 2018, our home in Peckham was conceived in partnership with Southwark Council as a truly 21st-century drama school and a creative arts hub for all. Our state-of-the-art facilities include the 200-seat Mountview Theatre (made possible by a £1m donation from Sir Cameron Mackintosh), the 80-seat Backstage Theatre, 21 acting/dance studios, TV and radio suites and production workshops. In recognition of their extraordinary work in establishing Mountview's new home and for their commitment to promoting inclusivity, Joint Chief Executives Stephen Jameson and Sarah Preece were presented with Olivier Awards in 2020.

Shortlisted for the RIBA London Regional Awards and Stage Awards Theatre Building of the Year, our new home is not only a vital resource for our students, but also an emerging centre of excellence for accessibility in the arts. Our fully accessible building is home to leading disability arts practitioners Candoco Dance Company amongst a number of other resident professional companies.

Today's students will join a constellation of graduates making their mark on the profession. Actor Noah Thomas (*Everybody's Talking About Jamie*), Actor/Writer Amy Trigg (winner, inaugural Women's Prize for Playwriting 2020), Olivier Award-winning Actor/Writer Giles Terera MBE (*Hamilton*) and Michael Longhurst, Artistic Director of the Donmar Warehouse are just a few of our notable alumni.



**THE STAGE**

This theatre was made possible by an extraordinary gift from Sir Cameron Mackintosh and the Mackintosh Foundation. Cameron's generosity enabled the completion of this theatre, where generations of Mountview students will develop their craft. We are profoundly grateful for his championship and support and are proud to honour his commitment to the future of theatre.

**MOUNTVIEW  
THEATRE**





## Judi Dench Fund

— FOR ACCESS TO DRAMA TRAINING —

## THE JUDI DENCH FUND

We believe that all young people with the talent and drive to succeed should be supported to pursue lifelong careers in the arts.

The Judi Dench Fund for Access to Drama Training invests in initiatives that break down barriers to drama training, including a nationwide talent scouting network, scholarships, hardship grants and wellbeing and welfare support.

Like charities everywhere, Mountview is facing unprecedented challenges and the Judi Dench Fund has never been more vital. Financial need amongst students is at an all-time high and help at this critical moment could make the difference between a young artist flourishing and being unable to sustain themselves through their training.

If you enjoy this performance, please consider donating what you would have paid for a ticket. Together we can directly alter the prospects of young people at a pivotal moment in their lives.

## THANK YOU

Mountview extends a sincere thank you to the individuals and organisations who generously support our work, including the following major donors,

**The Mackintosh Foundation**

**The Backstage Trust**

**Southwark Council**

**The Leverhulme Trust**

**Sir Trevor and Lady Susan Chinn**

**André and Judith Ptaszynski**

**Mr Peter Williams and Ms Heather Acton**

**Andrew Lloyd Webber Foundation**

**Elaine Paige OBE**

**Mr Jamie Lonsdale**

**Sir Clive Jones and Dame Vikki Heywood**

**Scops Arts Trust**

**Noël Coward Foundation**

**Harold Hyam Wingate Foundation**

**The Arts Society Greater London Area**

*And those who wish to remain anonymous.*

**To make a gift or find out more, we warmly invite you to visit our [website](#) or [get in touch](#) with the Development team. Thank you.**



'Mountview was the only school willing to give someone like me a chance. I was going through the homeless system when I applied and I thought going to drama school was going to be an impossible mission, but then Mountview offered me a place and a full scholarship - it changed my life. Knowing the Judi Dench Fund will help future students in my position is amazing.'

**CHARLIE HEPTINSTALL**

*BA (Hons) Performance - Acting 2020 graduate*



Photo by RULER

The Roaring Girl

CAST

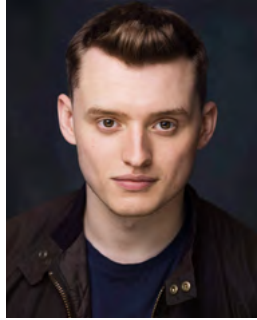
BD - The Beau Defeated

FREYA CARROLL



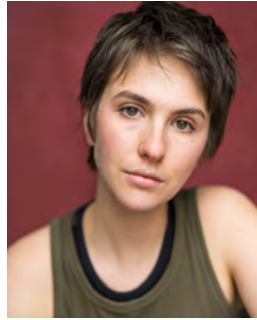
Neatfoot • Mistress Gallipot • Ensemble • Governess (BD)

TOM DEAN



Laxton • Sir Guy • Young Clerimont (BD)

SOPHIA HIRSCH



Moll

EDDIE HOUSE



Trapdoor

JONATHAN ICETON



Sebastian • Jack Dapper

LUCY LOUGHNANE



Crew 2 • Sir Davy Dapper • Mistress Openwork • Porter

RICHARD LUND



Sir Alexander • Fellow

GEORGINA SCOTT



Crew 3 • Mary Fitz-Allard • Mistress Tiltyard • Officer • Chris (BD)

The Beau Defeated

OPHELIA CHARLESWORTH



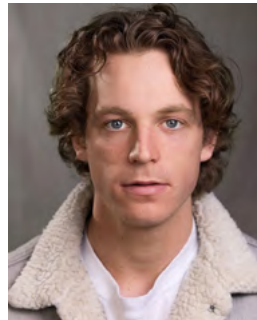
Mrs Clerimont

BELLE FAGE



Mrs Rich

ROBERT HADLOCK



Mr Rich • Elder Clermimont

RUFUS LOVE



Sir John

MOYA MATTHEWS



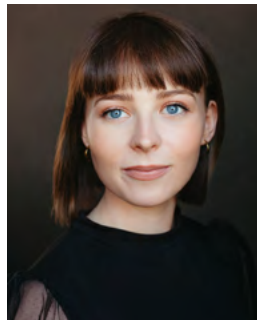
Lady Landsworth

AIMEE MCGOLDRICK



Betty

HEATHER O'SULLIVAN



Lucinda • Belvoir

INDIA WILSON



Lady Trickwell

A double bill of sensational stories of audacious women, ambition and London society, in contemporary re-workings created by the company.

**THE ROARING GIRL** - A rebellious London underworld, led by fearless and feisty 'roaring girl', Moll Cutpurse, collides with its upper classes in Dekker and Middleton's bawdy city comedy. As gender, class and convention are subverted, can the underdog become the hero?

**THE BEAU DEFEATED** - A biting satire on social aspiration, this riotous play follows two ambitious women in search of respectable husbands. Written by Mary Pix, as popular in her day as her male contemporaries, *The Beau Defeated* shows us a wild world full of colourful characters who will stop at nothing in the pursuit of fame and glory.

## PRODUCTION

**DIRECTOR**  
STEPHEN HUDSON

**CAMERA DIRECTOR**  
GAVIN HALES

**SET & COSTUME DESIGNER**  
RHYANNON RICHARDSON

**LIGHTING DESIGNER**  
MARK DYMOCK

**SOUND DESIGNER**  
MATTHEW GILES

**FIGHT CHOREOGRAPHER**  
MARCELLO MARASCALCHI

**VOICE COACH**  
AMANDA STEPHENS-LEE

**ASSOCIATE DIRECTOR**  
CHARLOTTE EVEREST

**ASSOCIATE LIGHTING DESIGNER/  
PROGRAMMER**  
ANTHONY ARBLASTER

**PRODUCTION MANAGERS**  
CORY DUFFILL  
ALYSHA LAVINIÈRE  
DAVIN PATRICK

**STAGE MANAGER**  
CECILIE FRAY

**DEPUTY STAGE MANAGER**  
MATTHEW PROSSER

**ASSISTANT STAGE MANAGERS**  
ALEC JORDAN  
VICTORIA SHANNON

**WARDROBE SUPERVISOR**  
MEGAN AYRTON

**PRODUCTION LX**  
HAKAN HAFIZOGLU

**PRODUCTION SOUND ENGINEER**  
WAYNE HARRIS

**LX 2**  
TRIX BANIONYTE

**LX 3**  
BERIL YAUZ

**SOUND OPERATOR**  
DOMINIC DIENST

**SOUND NO. 2**  
JACK YEOMAN

**LEAD SCENIC ARTIST**  
ELLIE PITT

**DEPUTY SCENIC ARTIST/PROP  
MAKER** MARCUS LIM

**LEAD CARPENTER**  
EMMA HAYWARD

**DEPUTY LEAD CARPENTER**  
TOM BARNETT

**CAMERA OPERATOR**  
KEERA MITCHELL  
ECEM SARI  
WU WAI LOK

### THANKS TO

AUTOGRAPH SOUND LTD  
WHITE LIGHT LTD

#### STEPHEN HUDSON *Director*

Director, actor and acting trainer who has also worked in music composition, movement direction and sound design. Co-founder of The Brighton Laboratory theatre and training company. Trained at Drama Centre London under Christopher Fettes, Yat Malmgren and Reuven Adiv, RCSSD and the Institute of Biomechanics under Gennadi Bogdanov.

#### CHARLOTTE EVEREST *Associate Director*

Since training on Mountview's MA in Theatre Directing, Charlotte has directed internationally and for numerous London productions (Theatre503, The King's Head, Tristan Bates Theatre, The Old Red Lion and the Space). Charlotte is the Artistic Director of Mrs C's Collective, Associate Company at the Space theatre, and is Associate Artist to director Kristine Landon-Smith in theatre and film (National Youth Theatre, Park Theatre, RADA, East 15). Charlotte practices complicité and clowning within her process, creating material through the body.

#### RHYANNON RICHARDSON *Set and Costume Designer*

Rhyannon has been working in professional theatre for over 20 years, both as a set and costume designer and as a maker. Much of her work has been with community groups, theatre in education and drama schools, but she has also designed for a wide range of both small and large scale productions and tours, including the *Chester Mystery Plays*. She also designs for events, festivals and theme parks, and works as a mural artist and illustrator.

#### MARK DYMOCK *Lighting Designer*

Graduated from Croydon Art College and has designed numerous shows throughout the country and abroad. Credits include: *Once* (Regional premier tour), *Ken* (Terry Johnson and Hampstead), *House and Garden* (Watermill Theatre), *Clybourne Park* (Regional premiere tour), *Return to the Forbidden Planet* (25th Anniversary Tour), *Don't Look Now* (nominated for Offie Best Lighting Design - Queen's Theatre), *Betty Blue Eyes* (Regional premiere tour), Michael Morpurgo's *Butterfly Lion* (Kenwright), working with Willy Russell on *Educating Rita*, *Breezeblock Park* (Liverpool Playhouse) and *Shirley Valentine* (Royal Court Liverpool), *Farm Boy*, *The Hired Man*, *Kissing Sid James* (New York E59).

#### MATTHEW GILES *Sound Designer*

Matthew has been a sound designer and engineer for the past 12 years, his work has taken him all over the world with shows ranging from Fringe Festivals, UK and international touring and the West End. Credits include: *Hymn* (The Almeida), *Alice in Wonderland* (UK tour), *9 to 5* (The Savoy), *Young Frankenstein* (The Garrick), *Thriller Live* (The Lyric), *The Producers* (International Tour), *Flashdance* (UK tour), *In the Heights* (King's Cross Theatre), *The Railway Children* (King's Cross Theatre), *The Last Five Years* (UK tour), *Rent* (Edinburgh Fringe).



## COMING UP NEXT



A double bill  
*A New Way to Pay Old Debts*  
by Philip Massinger  
*The Alchemist* by Ben Jonson  
**8 - 11 September  
2021**  
Mountview Theatre

**RICHKILLER**

SIGN UP FOR OUR LATEST NEWS, [mountview.org.uk/keep-in-touch](https://www.mountview.org.uk/keep-in-touch)



[mountview.org.uk](https://www.mountview.org.uk)    @mountviewldn

**UEA** University of East Anglia

**TRINITY**  
COLLEGE LONDON

*Southwark*  
Council

**FDS** FEDERATION OF  
DRAMA SCHOOLS

**CDMT**  
Accredited School

**AMTC**  
ALLIANCE OF MUSICAL THEATRE CONSERVATORIES

President Dame Judi Dench CH DBE    Principal & Artistic Director Stephen Jameson    Executive Director Sarah Preece    Chairman Dame Vikki Heywood DBE

Board of Directors Sir Brendan Barber · Lady Susan Chinn · Laura Gander-Howe · Trevor Jackson · Benjamin Lafayette · Andrew Parker · John Reiss · Cllr Johnson Situ  
Dame Rosemary Squire OBE · Giles Terera MBE · Artistic Associates Maria Aberg · Annabel Arden · Paul Arditti · Neil Austin · Alecky Blythe · Paul Clay · Aletta Collins · Lindsey Coulson  
Brian Cox CBE · Martin Duncan · David Edelstein · Philip Engleheart · Alasdair Flint · Howard Goodall CBE · Douglas Henshall · Amanda Holden · Terry Johnson · Akram Khan MBE  
Kwame Kwei-Armah OBE · Leigh Lawson · Dame Twigg Lawson · Eddie Marsan · Elaine Paige OBE · Michael Pennington · Tom Piper MBE · Indhu Rubasingham MBE · Liam Steel  
Ken Stott · Sarah Travis · Roy Williams OBE · Anton Woodward OBE

Registered Office, 120 Peckham Hill Street, London SE15 5JT · Registered Charity No, 274166 · Incorporated In England No, 01019858