

MOUNTVIEW

THE
OFFICE
K
RIC

A double bill

A New Way to Pay Old Debts by Philip Massinger

The Alchemist by Ben Jonson

Directed by **Jeff James** - Set and Costume Design by **PJ McEvoy**
Lighting Design by **Marc Rosette** - Sound Design by **Thomas Evans**
Performed by **Mountview's MA Performance** - Acting students

8 - 11 September 2021 Mountview Theatre



Photo by RULER

ABOUT MOUNTVIEW

Excellence, Access and Innovation in dramatic training are at the heart of our work. Since 1945, we have trained the very best performers, directors, theatre production artists and producers. We are committed to ensuring our community of over 500 students is representative and that drama training is accessible to all.

Opened in 2018, our home in Peckham was conceived in partnership with Southwark Council as a truly 21st-century drama school and a creative arts hub for all. Our state-of-the-art facilities include the 200-seat Mountview Theatre (made possible by a £1m donation from Sir Cameron Mackintosh), the 80-seat Backstage Theatre, 21 acting/dance studios, TV and radio suites and production workshops. In recognition of their extraordinary work in establishing Mountview's new home and for their commitment to promoting inclusivity, Joint Chief Executives Stephen Jameson and Sarah Preece were presented with Olivier Awards in 2020.

Shortlisted for the RIBA London Regional Awards and Stage Awards Theatre Building of the Year, our new home is not only a vital resource for our students, but also an emerging centre of excellence for accessibility in the arts. Our fully accessible building is home to leading disability arts practitioners Candoco Dance Company amongst a number of other resident professional companies.

Today's students will join a constellation of graduates making their mark on the profession. Actor Noah Thomas (*Everybody's Talking About Jamie*), Actor/Writer Amy Trigg (winner, inaugural Women's Prize for Playwriting 2020), Olivier Award-winning Actor/Writer Giles Terera MBE (*Hamilton*) and Michael Longhurst, Artistic Director of the Donmar Warehouse are just a few of our notable alumni.



THE STAGE

This theatre was made possible by an extraordinary gift from Sir Cameron Mackintosh and the Mackintosh Foundation. Cameron's generosity enabled the completion of this theatre, where generations of Mountview students will develop their craft. We are profoundly grateful for his championship and support and are proud to honour his commitment to the future of theatre.

**MOUNTVIEW
THEATRE**



Judi Dench Fund

— FOR ACCESS TO DRAMA TRAINING —

THE JUDI DENCH FUND

We believe that all young people with the talent and drive to succeed should be supported to pursue lifelong careers in the arts.

The Judi Dench Fund for Access to Drama Training invests in initiatives that break down barriers to drama training, including a nationwide talent scouting network, scholarships, hardship grants and wellbeing and welfare support.

Like charities everywhere, Mountview is facing unprecedented challenges and the Judi Dench Fund has never been more vital. Financial need amongst students is at an all-time high and help at this critical moment could make the difference between a young artist flourishing and being unable to sustain themselves through their training.

If you enjoy this performance, please consider donating what you would have paid for a ticket. Together we can directly alter the prospects of young people at a pivotal moment in their lives.

THANK YOU

Mountview extends a sincere thank you to the individuals and organisations who generously support our work, including the following major donors,

The Mackintosh Foundation

The Backstage Trust

Southwark Council

The Leverhulme Trust

Sir Trevor and Lady Susan Chinn

André and Judith Ptaszynski

Mr Peter Williams and Ms Heather Acton

Andrew Lloyd Webber Foundation

Elaine Paige OBE

Mr Jamie Lonsdale

Sir Clive Jones and Dame Vikki Heywood

Scops Arts Trust

Noël Coward Foundation

Harold Hyam Wingate Foundation

The Arts Society Greater London Area

And those who wish to remain anonymous.

To make a gift or find out more, we warmly invite you to visit our [website](#) or [get in touch](#) with the Development team. Thank you.



'Mountview was the only school willing to give someone like me a chance. I was going through the homeless system when I applied and I thought going to drama school was going to be an impossible mission, but then Mountview offered me a place and a full scholarship - it changed my life. Knowing the Judi Dench Fund will help future students in my position is amazing.'

CHARLIE HEPTINSTALL

BA (Hons) Performance - Acting 2020 graduate



Photo by RULER

A New Way to Pay Old Debts

CAST

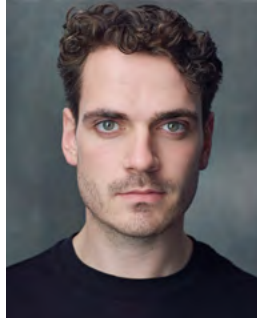
DURATION 120 MINUTES (Plus a 20-minute interval)

TEODOR
ABREU



Lord Lovell

ADAM
DEARY



Sir Giles Overreach

SHAQUILLE
JACK



Wellborn

BEATRICE
JOHN



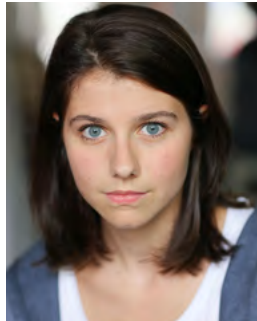
Lady Allworth

ELEANOR
MACK



Margaret

LÉA
MÉNAGER



Furnace

BAMIKALE
OLADAPO



Tom Allworth

KATHRYN
THICKETT



Justice Greedy

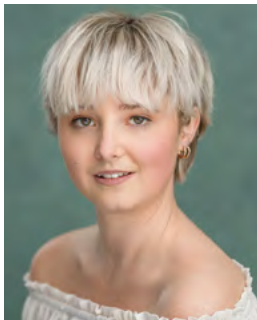
The Alchemist

ADAM PHILLIP
BLOOM



Sir Epicure Mammon

MARTIA
DIMMER



Doll Common

IBBI
EL HANI



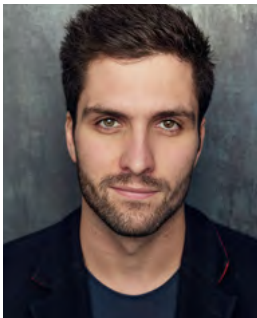
Drugger

ANGELA
LAW



Dapper

MARTIN
HAROCHE



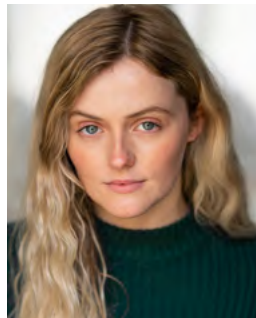
Lovewit

RACHEL
MORRIS



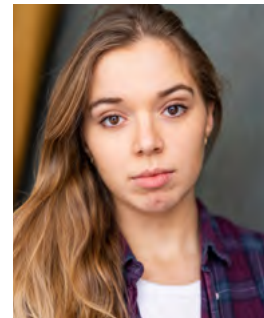
Face

AIMEE
PARK-RICHARDSON



Surly

REBECCA
THOMAS



Subtle

A double bill of twisted tales of deception, sex & money in contemporary re-workings created by the company.

A NEW WAY TO PAY OLD DEBTS - The arch manipulator Sir Giles Overreach finds himself the victim of a trick when he is persuaded to believe in two fake relationships. Things get out of hand when the fake relationships become rather more real than had been planned.

THE ALCHEMIST - when London is hit by an outbreak of the plague, Lovewit escapes to the countryside. Face, Subtle and Doll squat in in his house and pretend they know how to turn metal into gold for a parade of eager customers. Things couldn't be going better for the gleeful trio until they receive a very unwelcome visitor...

PRODUCTION

DIRECTOR
JEFF JAMES

MOVEMENT DIRECTOR
INGRID MACKINNON

CAMERA DIRECTOR
GAVIN HALES

SET & COSTUME DESIGNER
PJ MCEVOY

LIGHTING DESIGNER
MARC ROSETTE

SOUND DESIGNER
THOMAS EVANS

VOICE COACH
AMANDA STEPHENS-LEE

ASSOCIATE DIRECTOR
JÚLIA LEVAI

PRODUCTION MANAGER
CORY DUFFILL

STAGE MANAGER
NAOMI WILDRIDGE

DEPUTY STAGE MANAGER
PIP SNOW

ASSISTANT STAGE MANAGER/BOOK COVER
MEGAN BLY

ASSISTANT STAGE MANAGER
LAUREN HITCHEN

WARDROBE SUPERVISOR
LISA HICKEY

PRODUCTION LX
HAKAN HAFIZOGLU

PRODUCTION SOUND ENGINEER
WAYNE HARRIS

LIGHTING PROGRAMMER
ANTHONY ARBLASTER

LX PROGRAMMER
COLIN EVERSDIJK

LX 3
BRIAN GAY

SOUND OPERATOR
JACK YEOMAN

SOUND NO. 2
DOMINIC DIENST

LEAD SCENIC ARTIST
CHARLOTTE BOWNASS

SCENIC ARTIST/PROP MAKER
AURELIE CLARK

LEAD CARPENTER
TOM BARNETT

DEPUTY LEAD CARPENTER
EMMA HAYWARD

CAMERA OPERATOR
KEERA MITCHELL
ECEM SARI
BERIL YAUZ

THANKS TO

AUTOGRAPH SOUND LTD
WHITE LIGHT LTD

JEFF JAMES *Director*

Jeff's credits as director include: *Persuasion* (Manchester Royal Exchange), *Noah and the Peacock* (Nottingham Playhouse), *La Musica* (Young Vic), *One for the Road/Victoria Station* (Young Vic/Print Room), and *Stink Foot* (The Yard Theatre). His writing includes *Noah and the Peacock*, *Persuasion* and *Stink Foot*. Jeff was Associate Director on Ivo van Hove's English language productions from 2014-2017, including *A View from the Bridge*, *Hedda Gabler*, *Lazarus*, and *The Crucible*.

JÚLIA LEVAI *Associate Director*

Júlia is a theatre director. She trained at LAMDA, and on the Young Vic's Jerwood Assistant Director Program. She recently received an MGCFutures bursary. Her directing credits include: *Did I Wake You?* (Young Vic), *The Prince of Homburg* (The Space/LAMDA), *Sweeties* (Theatre503), *There Has Possibly Been An Incident* (Blue Elephant Theatre), *Amphibious* (York Theatre Royal). Her assistant directing credits include: *L'illusion Comique* (National Theatre Belgrade), *Nora: A Doll's House* (Young Vic), *Love Steals Us From Loneliness* (LAMDA), *Robin Hood* (York Theatre Royal)

INGRID MACKINNON *Movement Director*

Movement direction credits include *Romeo and Juliet* (Regents Park Open Air Theatre), *Josephine* (Theatre Royal Bath/The Egg), *Hamlet* (RCSSD), *Bonnie & Clyde* (London College of Music), *First Encounters: The Merchant of Venice* (RSC), *Typical* (Nouveau Riche, Soho Theatre), *Liar Heretic Thief* (Lyric), *#WeAreArrested* (RSC/Arcola), *The Border* (Theatre Centre), *#DR@CULA!* (RCSSD), *Kingdom Come* (RSC). Intimacy Support for *Carousel* (Regents Park Open Air Theatre). Visiting lecturer at Guildhall, Mountview, and RCSSD. Co-founder of MoveSpace and has an MA in Movement: Directing and Teaching from Royal Central School of Speech and Drama.

PJ MCEVOY *Set and Costume Designer*

PJ designs sets, costumes and video content for theatre having trained in Professional Production Skills at Guildford School of Acting. Design credits include: *Falsettos* (The Other Palace), *Intra Muros* (Park Theatre), *All In A Row* and *Doubt, A Parable* (Southwark Playhouse), *Fanatical* (Playground Theatre), *A Little Princess* (Royal Festival Hall), *The Secret Garden* (Barn Theatre), *Outlaws To In-Laws* (King's Head), *The Dover Road* (Jermyn Street Theatre), *The Pillowman* (Aberdeen Arts Centre), *Alice in Wonderland* (Guildford Shakespeare Company).

MARC ROSETTE *Lighting Designer*

Marc has enjoyed an extensive career working in theatre, opera and the corporate world. He currently works for English National Opera. Recent design credits: *Paul Bunyan* (Wiltons, Alexandra Palace), *Finish This, Breathe* (ENO), *Nabucco*, *Lucia di Lammermoor*, *Le Cid*, *La Bohème*, *Don Giovanni*, *Così fan tutte*, *Acis and Galatea* (Dorset Opera), *Postcards* (Sadler's Wells), *Trouble in Tahiti* (Buxton Festival, QEH), *The Lighthouse* (St Magnus Festival, Lancaster), *The Sins* (Ulverston, Hatfield), *L'Orfeo*, *La Bohème* (Blackheath).

THOMAS EVANS *Sound Designer*

Thomas is a freelance Sound Designer who has since lockdown worked on *Going Ape* (Union Theatre), *Hope Fest* (Hope Mill Theatre, Manchester) and *Why The Whales Came* (BYMT, Theatre Royal Plymouth). He enjoys traveling both nationwide and internationally for work and often tours with Protein Dance (*The Little Prince*, *Border Tales*). Other credits include *Scouse: A Comedy of Terrors* (Grand Central Hall, Liverpool), Stephen Triffitt's *Frankly Sinatra* (tour) and Les Enfants Terribles' *Marvellous Imaginary Menagerie* (tour).

WARNING *Filthy/Rich* will feature flashing lights, pyrotechnic devices, a firearm, scenes of a sexual nature and drug use.

COMING SOON

A UT UMN SEAS ON 2021

MOUNTVIEW

SIGN UP FOR OUR LATEST NEWS, mountview.org.uk/keep-in-touch



mountview.org.uk    @mountviewldn

 University of East Anglia

 TRINITY
COLLEGE LONDON

 Southwark
Council

 FDS
FEDERATION OF
DRAMA SCHOOLS

 CDMT
Accredited School

 AMTC
ALLIANCE OF MUSICAL THEATRE CONSERVATORIES

President Dame Judi Dench CH DBE

Principal & Artistic Director Stephen Jameson

Executive Director Sarah Preece

Chairman Dame Vikki Heywood DBE

Board of Directors Sir Brendan Barber · Lady Susan Chinn · Laura Gander-Howe · Trevor Jackson · Benjamin Lafayette · Andrew Parker · John Reiss · Cllr Johnson Situ
Dame Rosemary Squire OBE · Giles Terera MBE · Artistic Associates Maria Aberg · Annabel Arden · Paul Arditti · Neil Austin · Alecky Blythe · Paul Clay · Aletta Collins · Lindsey Coulson
Brian Cox CBE · Martin Duncan · David Edelstein · Philip Engleheart · Alasdair Flint · Howard Goodall CBE · Douglas Henshall · Amanda Holden · Terry Johnson · Akram Khan MBE
Kwame Kwei-Armah OBE · Leigh Lawson · Dame Twigg Lawson · Eddie Marsan · Elaine Paige OBE · Michael Pennington · Tom Piper MBE · Indhu Rubasingham MBE · Liam Steel
Ken Stott · Sarah Travis · Roy Williams OBE · Anton Woodward OBE

Registered Office, 120 Peckham Hill Street, London SE15 5JT · Registered Charity No, 274166 · Incorporated In England No, 01019858