

MOUNTVIEW

LIFE



WE WELCOME:

ALL RACES

ALL RELIGIONS

ALL NATIONALITIES

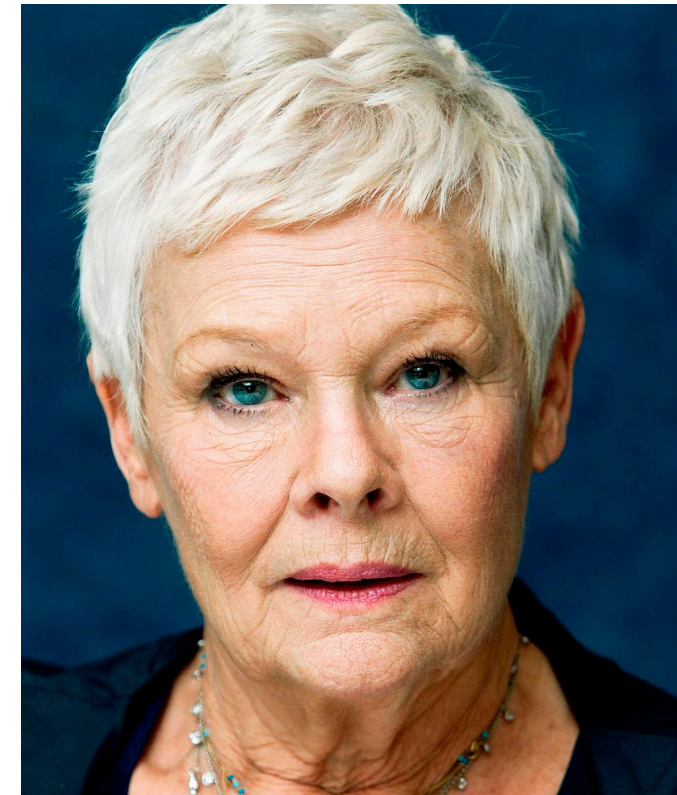
ALL SEXUAL ORIENTATIONS

ALL GENDERS

ALL ABILITIES

ALL AGE GROUPS

**WE STAND WITH YOU,
YOU ARE WELCOME HERE
IN OUR COMMUNITY**



WELCOME

As President of Mountview it gives me real pleasure to introduce you to this fine drama school which enjoys a worldwide reputation for excellence.

This is the first step on your stimulating journey to entering a complex and exciting industry. If you come to Mountview you will attend a world-class drama school where the staff is dedicated to helping you get the very best out of your training no matter your background. Of course there is no easy route to success and there can be no guarantees, but professional training will prepare you for the start of what I hope will be a long, fulfilling and fruitful career.

With very best wishes,

DAME JUDI DENCH CH, DBE

President

PERFORMING ON THE WORLD'S STAGE

MOUNTVIEW IS ONE OF THE UK'S LEADING DRAMA SCHOOLS

We provide the highest quality training for actors, creative producers, musical directors, directors, site-specific practitioners, theatre makers, scenic artists, prop makers and theatre production artists and have a strong commitment to the specialised requirements of TV, film and radio. We are committed to ensuring students leave Mountview prepared for the 21st century industry.

We offer intensive, practical training with all full-time students receiving over 30 hours of practical teaching each week, 36 weeks per year. You will be taught in small groups and receive regular one-to-one sessions with personal tutors and specialist practitioners from across the industry.

This guide will tell you more about life at Mountview, whilst full details of all our courses can be found by exploring [our website](#).



One of the most beloved of our national drama schools, Mountview's commitment to diversity has made it vital to the future not just of British theatre, but film and TV industries too.

STEPHEN DALDRY CBE

Director (The Crown, The Inheritance, Billy Elliot)



MOUNTVIEW IN PECKHAM

In September 2018 we opened the doors to our brand new purpose-built home in the heart of Peckham, one of South London's most creative, dynamic and diverse neighbourhoods. Our award-winning drama school was architecturally designed to be a 'warehouse for the arts', with students placed at its heart.

Facilities include The Mack, our 200-seat main house theatre designed to stage large-scale musicals and plays; The Backstage Theatre, a fully flexible 80-seat black box studio theatre; 21 rehearsal, acting and dance studios; TV studios and a radio suite; and a range of production arts workshops.

Our Peckham home is a space not only for students but for the wider industry too. Professional companies including Candoco Dance Company, English Touring Opera and Touretteshero are resident in our building, whilst our Pro Rehearsal Room is used year-round by companies including Chichester Festival Theatre, Trafalgar Entertainment, Akram Khan Dance Company and BAFTA.

Three independent restaurants, bars and cafes can be found onsite: Westland Coffee & Wine; the Tokyo-inspired gaming café, Loading Bar; and rooftop bar/restaurant Skylight, with panoramic views of the London skyline.

As a student at Mountview, you will not only benefit from being part of the thriving creativity and community of Peckham, but will also be just 12 mins by train to the buzz of central London.



I love Peckham for its creativity and its diversity... I can't think of a better place for a theatre school.

OLIVIA COLMAN

Campaign Ambassador



YOUR WELFARE

Your welfare and happiness are of prime importance, so great emphasis is placed on pastoral care at Mountview. We recognise that drama training can be intensive and we have a range of support in place to ensure that Mountview is a supportive and nurturing environment, and you are able to make the most of your training.

This includes our personal tutor and “buddy” systems, a Student Welfare Manager, dedicated wellbeing rooms, counsellors from a range of lived experiences and with a variety of therapeutic approaches, and specialist sessions on topics such as stress management and nutrition.

For those students with disabilities, mental health conditions, learning difficulties and neurodiversity, specialist support and guidance is available throughout your training.

Our Students Union promote and support the interests of specific groups, and plan social, cultural and recreational events throughout the year, helping to build a community that celebrates the diversity of our student body.

The physical, mental and emotional well-being of the students is regarded as a high priority by Mountview and this sense of care is reinforced by sound practice and advice in such areas as nutrition and exercise.

COUNCIL FOR DANCE, DRAMA AND MUSICAL THEATRE (CDMT) REPORT 2019



Today more than ever when young, scrappy and hungry artists from all backgrounds need their authentic voice heard this school's work means more to me than anything.

GILES TERERA MBE
Mountview Deputy Chair, Actor

ACCOMMODATION

Peckham is incredibly well connected on public transport and there are a range of accommodation options to consider:

- Capitol Students provide and manage halls of residence which Mountview students can access. The nearest is Bernard Myers Hall, a 15-minute walk from Mountview. You will live in flats of six/eight, each with their own ensuite and a shared kitchen/dining space. Rates are around £200 per week and include wifi, insurance and all utilities. To find out more about **Bernard Myers Hall**, see the accommodation page of our website.
- There is a range of shared student housing in Peckham and South East London, with travel from neighbouring areas such as Camberwell, New Cross, Elephant & Castle, Catford and South Bermondsey easy and popular with Mountview students. Shared housing costs can vary, but is likely to start from around £580 per month excluding utilities / bills.
- There are a range of private student halls throughout South London and resources like mystudenthalls.com will help you explore your options.



My time at Mountview was inspiring, challenging and empowering: I started the year with a very raw and uninformed passion for directing – and finished it well prepared to enter the profession.

MICHAEL LONGHURST
Director





HOW TO APPLY

Mountview is committed to breaking down barriers to drama training, and welcoming students from all backgrounds. To reflect this, we focus on performance at audition or interview rather than your academic qualifications. Our audition/interview process is designed to explore your current and potential abilities, and the scope for you to benefit from our training.

Each course has its own audition/interview process, requirements and deadlines, which are clearly set out on the relevant course pages on our website, and in this document here. We encourage you to take the time to read through these carefully to make sure you are fully prepared.

In order to make auditions accessible to as many people as possible, first round auditions/ interviews for Foundation and Undergraduate courses take place online, saving candidates the time and cost of travelling to London. Digital submissions can be made on a device as simple as a mobile phone, and the process has been designed so that everyone will be considered equally regardless of the space or technology they have.

For some courses there is a small audition fee, but for those for whom this cost is a barrier, there are a number of free auditions available for individuals from low-income households. Additionally, all Southwark residents are eligible for one free audition. Please contact admissions@mountview.org.uk to find out if you are eligible for a free audition.

Our courses are open to students who will be 18 or over (Foundation / Undergraduate) or 21 and over (Postgraduate) at the time of course entry.

International students are advised to apply as early as possible in the audition process, to allow time for visa applications. You can check whether you require a student visa at www.gov.uk/student-visa

To apply visit mountview.org.uk/apply.

FEES AND FUNDING

Mountview is an independent education provider therefore students may need to consider a range of options to fund their studies. We understand that navigating your funding options can be difficult, so our Registry team are available to offer advice at any time, by emailing admissions@mountview.org.uk

STUDENT LOANS

UK/Republic of Ireland undergraduate students studying at Mountview are eligible to apply to the Student Loans Company for support. Full-time students can apply for tuition fee loans of up to £6,000 and maintenance loans of up to £12,667. For students to be eligible for SLC funding, they must be studying a qualifying course at an officially recognised Higher Education provider. All undergraduate courses at Mountview meet these criteria under our registration with the Office for Students, and subject to specific course designation being granted from the Higher Education Funding Council for Wales (HEFCW). To find out more visit gov.uk/student-finance

Postgraduate Loans are only available to UK students from Student Finance England and Welsh students through Student Finance Wales. In 2022 SFE offered funding up to £11,836 and SFW offered funding up to £18,025. Please note that SAAS and Student Finance NI do not currently fund Postgraduate Loans.

SCHOLARSHIPS & BURSARIES

We believe that talent and potential should be the only requirements for entry, and that personal circumstances should never prevent you from embarking on a successful career in theatre. That's why we are committed to offering a range of scholarships and bursaries to support you with the costs of study. In 2023, we'll be significantly increasing our scholarships fund as we recognise that the current cost of living crisis is particularly impacting our students.

Scholarships are awarded on the basis of financial need, talent and potential, and some awards may be course-specific. Applications are considered twice a year - in May and July - and information on how to apply will be made available to students who are in receipt of an offer to study. All scholarship offers are for one year, and continuing students will need to reapply for each year of study.

We anticipate the demand for Mountview scholarships will exceed what we can offer, so we strongly encourage students to also spend time researching and applying for external funding and awards. Each funding opportunity will have their own focus and criteria, so allow plenty of time and be clear about what you hope to gain from your time at Mountview.

If you have questions about scholarship support or would like some advice on external opportunities, please get in touch with Admissions on admissions@mountview.org.uk or visit mountview.org.uk/funding

PART-TIME WORK

Many of our students also undertake part-time work alongside their studies to support their living costs. There are often part-time roles available onsite at Mountview (as Front of House Ushers or hospitality roles at Skylight, Westland and Loading Bar) as well as work in the surrounding areas of South London.



OUR FAMILY OF ALUMNI

Your relationship with Mountview doesn't end at graduation. The Alumni Network brings together 75 years of graduates to share, support and celebrate with one another. By studying with us, you will join a constellation of graduates making their mark on the industry across disciplines and genres.

Notable alumni include:



LOIS CHIMIMBA
Actor



BRENDAN COYLE
Actor



JOSH DALLAS
Actor



LOUISA HARLAND
Actor



BETH HINTON-LEVER
Actor



AMANDA HOLDEN
Actor and TV
Presenter



JIM HOWICK
Actor



TYRONE HUNTLEY
Actor



BEN JOYCE
Actor



AYUB KHAN DIN
Writer and Actor



MICHAEL LONGHURST
Director



CHARLOTTE LOUGHNANE
Visual Effects
Artist



EDDIE MARSAN
Actor



NATHANIA ONG
Actor



ED PAGET
Stage Manager



KITTY SCOTT-CLAUS
Drag Queen



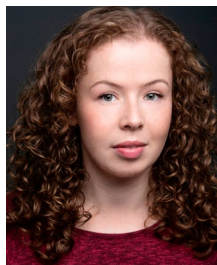
CLEVE SEPTEMBER
Actor



GILES TERERA
MBE
Deputy Chair and
Actor



NOAH THOMAS
Actor



AMY TRIGG
Actor

GUEST ARTISTS

NEIL AUSTIN *Lighting Designer*

PAULE CONSTABLE *Lighting Designer*

BRIAN COX CBE *Actor*

ROSALIE CRAIG *Actor*

STEPHEN DALDRY CBE *Director*

DAME JUDI DENCH *Actor*

NOMA DUMEZWENI *Actor*

SIR RICHARD EYRE *Director and Producer*

HADLEY FRASER *Actor*

REBECCA FRECKNALL *Actor*

HOWARD GOODALL CBE *Composer*

JOANNE HARRIS MBE *Author*

AMANDA HOLDEN *Actor and TV Presenter*

GLENDIA JACKSON CBE *Actor and Politician*

KWAME KWEI-ARMAH MBE

Actor, Playwright, Director and Broadcaster

MORGAN LLOYD-MALCOLM

Playwright and Screenwriter

LIN-MANUEL MIRANDA

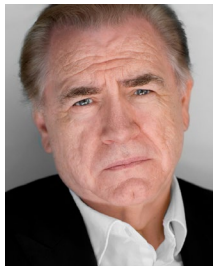
Composer, Lyricist, Actor and Filmmaker

TIM MINCHIN *Comedian, Actor, Composer,
Songwriter, Pianist & Director*

ELAINE PAIGE OBE *Actor, Singer and Producer*

TOM PIPER MBE *Award-winning Set Designer*

ROY WILLIAMS OBE *Playwright*



75 YEARS OF DRAMATIC TRAINING

PHOTO CREDITS

Excluding headshots

© Marc Brenner cover
© Cesare De Giglio p4
© Jim Johnston p14
© John Hunter at RULER p7
© Ellie Ramsden p11
© Robin Savage pp5/10

All information is correct at time of going to publication.

For fuller details of courses visit mountview.org.uk or consult course handbooks. Mountview will inform students of changes to courses, their structure and content, teaching staff and facilities.

In the event that a force majeure results in Mountview having to close no compensation or return of fees is payable.

© 2022 Mountview

Mountview Academy of Theatre Arts

Registered Charity No: 274166 · Incorporated in England No: 01019858

Registered Office: 120 Peckham Hill Street, London SE15 5JT

020 8881 2201 · admissions@mountview.org.uk

UEA University of
East Anglia

Southwark
Council

AdvanceHE

Member 22-23

FDS FEDERATION OF
DRAMA SCHOOLS

CDMT
Accredited School

mountview.org.uk