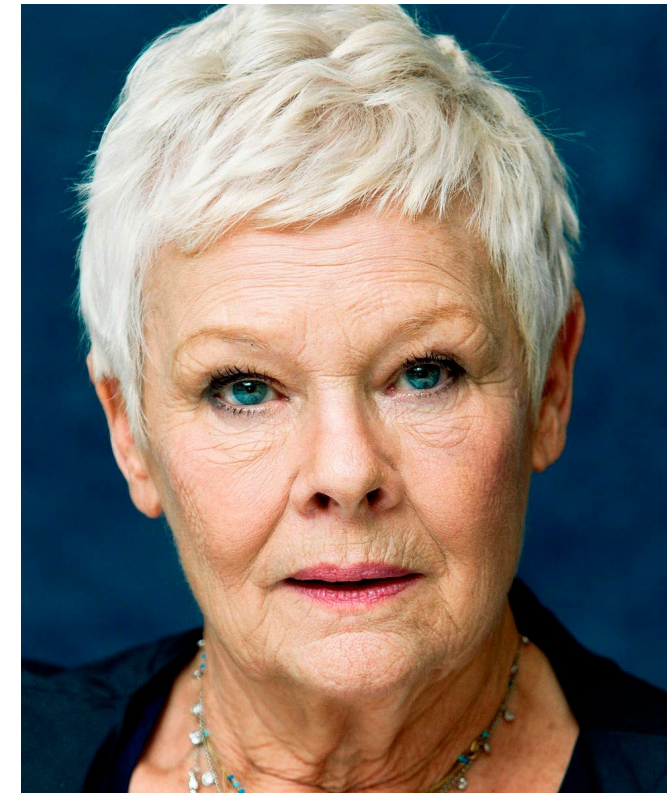


# LIFE AT MOUNTVIEW







# WELCOME

As President of Mountview it gives me real pleasure to introduce you to this fine drama school which enjoys a worldwide reputation for excellence.

This is the first step on your stimulating journey to entering a complex and exciting industry. If you come to Mountview you will attend a world-class drama school where the staff is dedicated to helping you get the very best out of your training no matter your background. Of course there is no easy route to success and there can be no guarantees, but professional training will prepare you for the start of what I hope will be a long, fulfilling and fruitful career.

With very best wishes,

**DAME JUDI DENCH CH, DBE**  
*President*



# PERFORMING ON THE WORLD'S STAGE

Mountview trains students differently. We develop actors and practitioners who will become the future of the creative industries, and are committed to opening up access to the dramatic arts for everyone. Through innovative practice, new approaches to working and close relationships with industry, we cultivate graduates who are independent, generous and actively connected to the issues of the day.

We offer intensive, practical training with all full-time students receiving over 30 hours of practical teaching each week, 36 weeks per year. You will be taught in small groups and receive regular one-to-one sessions with personal tutors and specialist practitioners from across the industry.

This guide will tell you more about life at Mountview, whilst full details of all our courses can be found by exploring [our website](#).



One of the most beloved of our national drama schools, Mountview's commitment to diversity has made it vital to the future not just of British theatre, but film and TV industries too.

**STEPHEN DALDRY CBE**

*Director (The Crown, The Inheritance, Billy Elliot)*





# MOUNTVIEW IN PECKHAM

Mountview's purpose-built home is based in the heart of Peckham, one of South London's most creative, dynamic and diverse neighbourhoods. Our award-winning drama school was architecturally designed to be a 'warehouse for the arts', with students placed at its heart.

Facilities include The Mack, our 200-seat main house theatre designed to stage large-scale musicals and plays; The Backstage Theatre, a fully flexible 80-seat black box studio theatre; 21 rehearsal, acting and dance studios; TV studios and a radio suite; and a range of production arts workshops.

Our Peckham home is a space not only for students but for the wider industry too. Professional companies including Candoco Dance Company, English Touring Opera and Touretteshero are resident in our building, whilst our Professional Rehearsal Studio is used year-round by companies including BBC, National Theatre, Trafalgar Entertainment, Shakespeare's Globe and BAFTA.

Two independent restaurants, bars and cafes can be found onsite: Westland Coffee & Wine; the Tokyo-inspired gaming café, Loading Bar; and rooftop bar/restaurant Skylight, with panoramic views of the London skyline.

As a student at Mountview, you will not only benefit from being part of the thriving creativity and community of Peckham, but will also be just 12 mins by train to the buzz of central London.



I love Peckham for its creativity and its diversity... I can't think of a better place for a theatre school.

**OLIVIA COLMAN**

*Campaign Ambassador*





# YOUR WELFARE

Your welfare and happiness are of prime importance, so great emphasis is placed on pastoral care at Mountview. We recognise that drama training can be intensive and we have a range of support in place to ensure that Mountview is a nurturing environment, and you are able to make the most of your training.

This includes our personal tutor system, a Student Welfare Manager, dedicated wellbeing rooms, counsellors from a range of lived experiences and with a variety of therapeutic approaches, and specialist sessions on topics such as stress management and developing resilience.

For those students with disabilities, mental health conditions, learning difficulties and neurodiversity, specialist support and guidance is available from the Student Welfare Manager, who will work to implement reasonable adjustments and can also assist with an application for Disabled Students Allowance.

Our Students Union promote and support the interests of specific groups, and plan social, cultural and recreational events throughout the year, helping to build a community that celebrates the diversity of our student body.

*The physical, mental and emotional well-being of the students is regarded as a high priority by Mountview and this sense of care is reinforced by sound practice and advice in such areas as nutrition and exercise.*

## COUNCIL FOR DANCE, DRAMA AND MUSICAL THEATRE (CDMT) REPORT 2019



Mountview’s ethos of not moulding students, but encouraging, enabling and producing actors was ideal for me and for many of my peers. While other schools may have said ‘this is the kind of actor we produce’, Mountview said ‘we produce actors, in all forms, from all backgrounds, and of all colours.’

**GILES TERERA MBE**  
*Olivier Award-winning actor and Mountview alum*



# ACCOMMODATION

Peckham is incredibly well connected on public transport and there are a range of accommodation options to consider:

- Capitol Students provide and manage halls of residence which Mountview students can access. The nearest is Bernard Myers Hall, a 15-minute walk from Mountview. You will live in flats of six/eight, each with their own ensuite and a shared kitchen/dining space. Rates are around £230 per week and include wifi, insurance and all utilities. To find out more about **Bernard Myers Hall**, see the accommodation page of our website.
- There is a range of shared student housing in Peckham and South East London, with travel from neighbouring areas such as Camberwell, New Cross, Elephant & Castle, Catford and South Bermondsey easy and popular with Mountview students. Shared housing costs can vary, but is likely to start from around £600 per month excluding utilities / bills.
- There are a range of private student halls throughout South London and resources like [mystudenthalls.com](https://mystudenthalls.com) will help you explore your options.



My time at Mountview was inspiring, challenging and empowering: I started the year with a very raw and uninformed passion for directing – and finished it well prepared to enter the profession.

**MICHAEL LONGHURST**  
*Olivier Award-winning director and Mountview alum*





# HOW TO APPLY

In order to make auditions accessible to as many people as possible we run in-person auditions at a variety of regional locations as well as in London. For international candidates and those with exceptional circumstances, we offer the option of submitting an online audition. Online submissions can be made on a device as simple as a mobile phone, and the process has been designed so that everyone will be considered equally regardless of the space or technology they have.

There is a £50 audition fee for all BA and MA Performance courses, and a £35 audition fee for all CertHE courses.

Candidates for MA Creative Producing, MA Musical Direction, MA Theatre for Community and Education, MA Site-Specific Theatre Practice, MA Theatre Directing and all Production Arts courses will be invited to attend an interview as part of their application and may be asked to submit a portfolio of work.

There is a £20 interview fee for MA Creative Producing, MA Musical Direction and MA Theatre Directing. There is no interview fee for MA Site-Specific Theatre Practice, MA Theatre for Community and Education and all Production Arts courses.

Mountview offers a limited number of fee waivers and reductions which are available for individuals from low-income households and Southwark residents.

Our courses are open to students who will be 18 or over (CertHE / Undergraduate) or 21 and over (Postgraduate) at the time of course entry.

International students are advised to apply as early as possible in the audition process, to allow time for visa applications. You can check whether you require a student visa at [www.gov.uk/student-visa](http://www.gov.uk/student-visa)

To apply visit [mountview.org.uk/apply](http://mountview.org.uk/apply).

# FEES AND FUNDING

Mountview is an independent education provider therefore students may need to consider a range of options to fund their studies. We understand that navigating your funding options can be difficult, so our Registry team are available to offer advice at any time, by emailing [admissions@mountview.org.uk](mailto:admissions@mountview.org.uk)

## STUDENT LOANS

UK/Republic of Ireland Undergraduate and CertHE\* students studying at Mountview are eligible to apply to the Student Loans Company for support. Full-time students can apply for tuition fee loans of up to £6,000 and maintenance loans of up to £12,667\*\*. For students to be eligible for SLC funding, they must be studying a qualifying course at an officially recognised Higher Education provider. All Undergraduate courses at Mountview meet these criteria under our registration with the Office for Students, and subject to specific course designation being granted from the Higher Education Funding Council for Wales (HEFCW). To find out more visit [gov.uk/student-finance](http://gov.uk/student-finance)

Postgraduate Loans are only available to UK students from Student Finance England and Welsh students through Student Finance Wales. In 2023 SFE offered funding up to £12,167 and SFW offered funding up to £18,770\*\*. Please note that SAAS and Student Finance NI do not currently fund Postgraduate Loans.

\*The CertHE courses will run subject validation by the University of East Anglia (UEA). This means the course is currently going through UEA's process to confirm the course will lead to a UEA award. Course validation will take place in May 2024 and is expected to be confirmed by August 2024. Once confirmed, applicants will be eligible to apply for student finance.

\*\*Please note that these figures refer to the 2023/24 loan rate. SLC/SFE/SFW will release their 2024/25 maintenance loan rate in early 2024.

## SCHOLARSHIPS & BURSARIES

We believe that talent and potential should be the only requirements for entry, and that personal circumstances should never prevent you from embarking on a successful career in theatre. That's why we are committed to offering a range of scholarships and bursaries to support you with the costs of study. Since 2023 we have significantly increased our scholarships fund as we recognise that the current cost of living crisis is particularly impacting our students.

Scholarships are awarded on the basis of financial need, talent and potential, and some awards may be course-specific. Applications are considered twice a year - in May and July - and information on how to apply will be made available to students who are in receipt of an offer to study. All scholarship offers are for one year, and continuing students will need to reapply for each year of study.

We anticipate the demand for Mountview scholarships will exceed what we can offer, so we strongly encourage students to also spend time researching and applying for external funding and awards. Each funding opportunity will have their own focus and criteria, so allow plenty of time and be clear about what you hope to gain from your time at Mountview.

If you have questions about scholarship support or would like some advice on external opportunities, please get in touch with Admissions on [admissions@mountview.org.uk](mailto:admissions@mountview.org.uk) or visit [mountview.org.uk/funding](http://mountview.org.uk/funding)

## PART-TIME WORK

Many of our students also undertake part-time work alongside their studies to support their living costs. There are often part-time roles available onsite at Mountview (as Front of House Ushers or hospitality roles at Skylight, Westland and Loading Bar) as well as work in the surrounding areas of South London.





# OUR ALUMNI

Your relationship with Mountview doesn't end at graduation. The Alumni Network brings together 75 years of graduates to share, support and celebrate with one another. By studying with us, you will join a constellation of graduates making their mark on the industry across disciplines and genres.

Notable alumni include:



**LOUISA HARLAND**  
BA Acting  
Louisa is best-known for her role of Orla in the wildly popular *Derry Girls* (Channel 4). She has appeared extensively onstage, including in *Dancing at Lughnasa* for the National Theatre and *Ulster American* with Woody Harrelson and Andy Serkis (Riverside Studios). Louisa will be playing the title role in the new Disney+ series *The Ballad of Renegade Nell*, and is also joining Brian Cox and Patricia Clarkson on stage in *A Long Day's Journey into Night* (West End).



**MICHAEL LONGHURST**  
MA Theatre Directing  
Michael worked as Artistic Director of the Donmar Warehouse from 2019-2024. He directed the multi-award-winning production of *Constellations* for The Royal Court, which went on to transfer to the West End and Broadway. Michael also directed the smash-hit production of Peter Shaffer's *Amadeus* (National Theatre), featuring orchestral accompaniment from Southbank Sinfonia.



**TONNY SHIM**  
BA Actor Musicianship  
Tonny's work has included new musical *The Curious Case of Benjamin Button* (Southwark Playhouse) and *The Borrowers* (UK tour). He is currently appearing in *Harry Potter and the Cursed Child* at the Palace Theatre, London.



**ERIC SHANGO**  
BA Acting  
Eric is best known for playing the role of Danny in *Trigger Point* (ITV) alongside Vicky McClure and Adrian Lester. His other work includes the role of Tanaka/Fiifi in *Barbershop Chronicles* (UK tour and Broadway) and *Suspicion* (Apple TV).



**AMY TRIGG**  
MA Musical Theatre  
Amy is an actor and writer, whose play *Reasons You Should(n't) Love Me* won the inaugural Women's Prize for Playwriting 2020. Her acting credits include *The Little Big Things* (@sohoplac), *Luther* (Netflix), *Such Brave Girls* (BBC) and *Unforgotten* (ITVX).



**CLEVE SEPTEMBER**  
BA Musical Theatre  
Cleve was Olivier nominated for his portrayal of John Laurens/Philip Hamilton in the original West Cast of *Hamilton*. His other credits include *The Little Big Things* (@sohoplac), *Bonnie and Clyde* (West End), *Dick Whittington* (National Theatre) and *West Side Story* (Royal Exchange Manchester).



**NICÔLE LECKY**  
BA Acting  
Nicôle is a writer, actor, and singer-songwriter. She wrote, starred in and executive-produced *Mood* (BBC) which won the BAFTA Awards for Best Mini-Series and Original Soundtrack. Nicôle also won the BAFTA Breakthrough Award in 2022, as well as the Netflix New Talent Award at the Women in Film & TV Awards.



**LYDIA HOLFORD**  
BA Stage Management  
Since graduating, Lydia has been working extensively across all areas of theatre. Most recently she has been DSM for the UK and International tour of *Titanic the Musical*, including a month of dates across China. Her previous show roles have included ASM/Book Cover, Technical Stage Manager and Stage Manager on Book.



## PHOTO CREDITS

Excluding headshots

© Bernard Myers Hall p9

© Tim Crocker inside cover

© Cesare De Giglio cover & p6

© Steve Gregson p3

© Stephen Glass @sglassphoto p10

© Skylight Peckham p4

All information is correct at time of going to publication.

For full details of courses visit [mountview.org.uk](https://mountview.org.uk)

Mountview will inform students of changes to courses, their structure and content, teaching staff and facilities.

© 2024 Mountview

Mountview Academy of Theatre Arts

Registered Charity No: 274166 · Incorporated in England No: 01019858

Registered Office: 120 Peckham Hill Street, London SE15 5JT

020 8881 2201 · [admissions@mountview.org.uk](mailto:admissions@mountview.org.uk)

**UEA** University of  
East Anglia

*Southwark*  
Council

**AdvanceHE**  
Affiliate Member 23-24

**FDS** FEDERATION OF  
DRAMA SCHOOLS

**CDMT**  
Accredited School

[mountview.org.uk](https://mountview.org.uk)