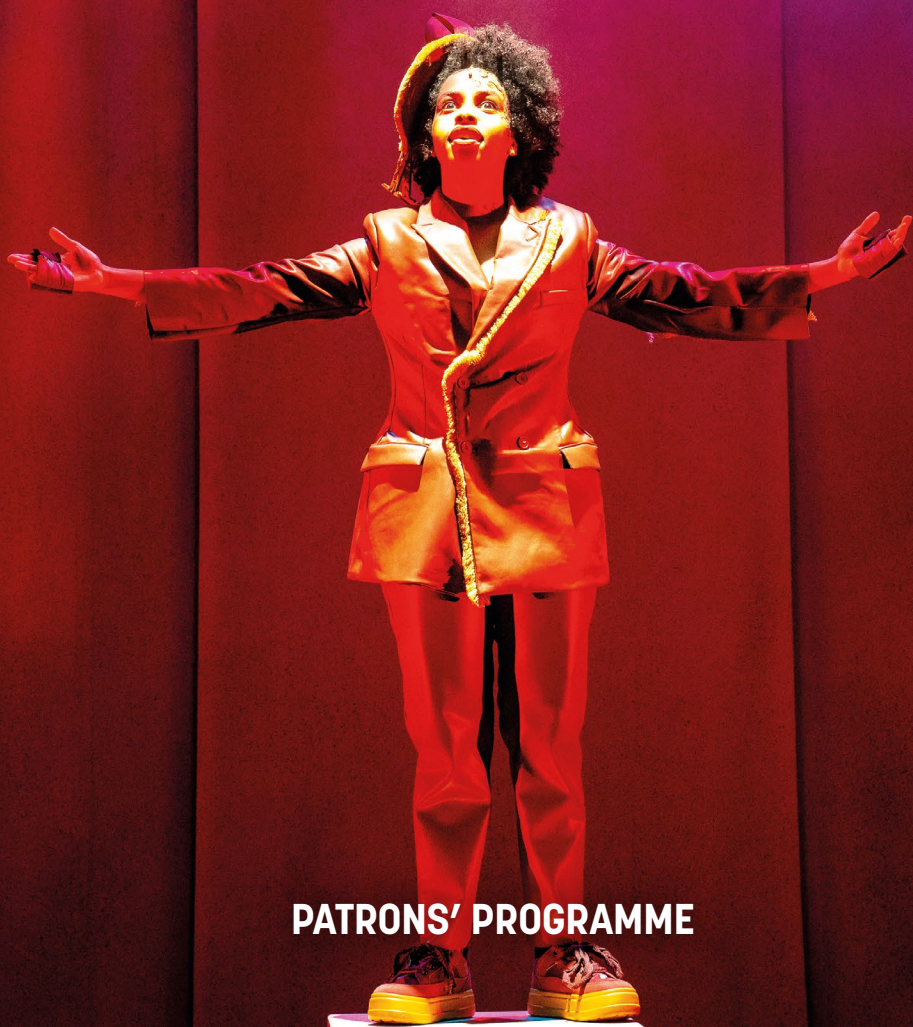


BE *IMMERSED*
BE ENLIGHTENED
BE ENTERTAINED
BE **MOUNTVIEW**



PATRONS' PROGRAMME



Cover: Odellia Dizel-Cubuca, Class of 2023, As seen in Harry Potter and the Cursed Child. This page: Chloe Palmer and cover photo: Steve Gregson, opposite: Stephen Glass



At Mountview, we believe everything is possible and our imagination is without limits. We train our students differently to ensure the next generation are bold – fuelled by curiosity, courage, optimism, and purpose.

We are so excited to be launching this Patrons' Programme, so that you too can experience what it means to train as an artist today. You will be granted unique insights into the world of dramatic training and in turn, become an integral part of our future.

There has never been a more important time to invest in the future of the arts, and by becoming a Patron you can do just that. Together we can create a future that is so bright it cannot be extinguished.

SALLY ANN GRITTON
Principal

Mountview is one of the UK's leading drama schools, developing actors and practitioners who will become the future of the creative industries. Through innovative practice, new approaches to working and close relationships with industry, we cultivate graduates who are independent, generous and actively connected to the issues of the day. From the West End and Broadway, to TV, film and beyond, our graduates join a constellation of alumni making their mark on the profession.

The arts can enrich and change lives. We are passionate about accessibility and engaging with communities in Peckham and beyond. Alongside our vocational training, we create opportunities for young people to engage in arts activities, sharing our space, expertise and resources with grassroots artists, schools, colleges and arts organisations.

We have ambitious plans centred on Mountview's mission to dismantle barriers to the arts and develop the artists and practitioners who will become the future of the creative industries worldwide. Read on to find out how you can join us in this next phase in our development, making a vital contribution to our work through our Patrons' programme.

"Mountview was the only school willing to give someone like me a chance. I was going through the homeless system when I applied and I thought going to drama school was going to be an impossible mission, but then Mountview offered me a place and it changed my life."

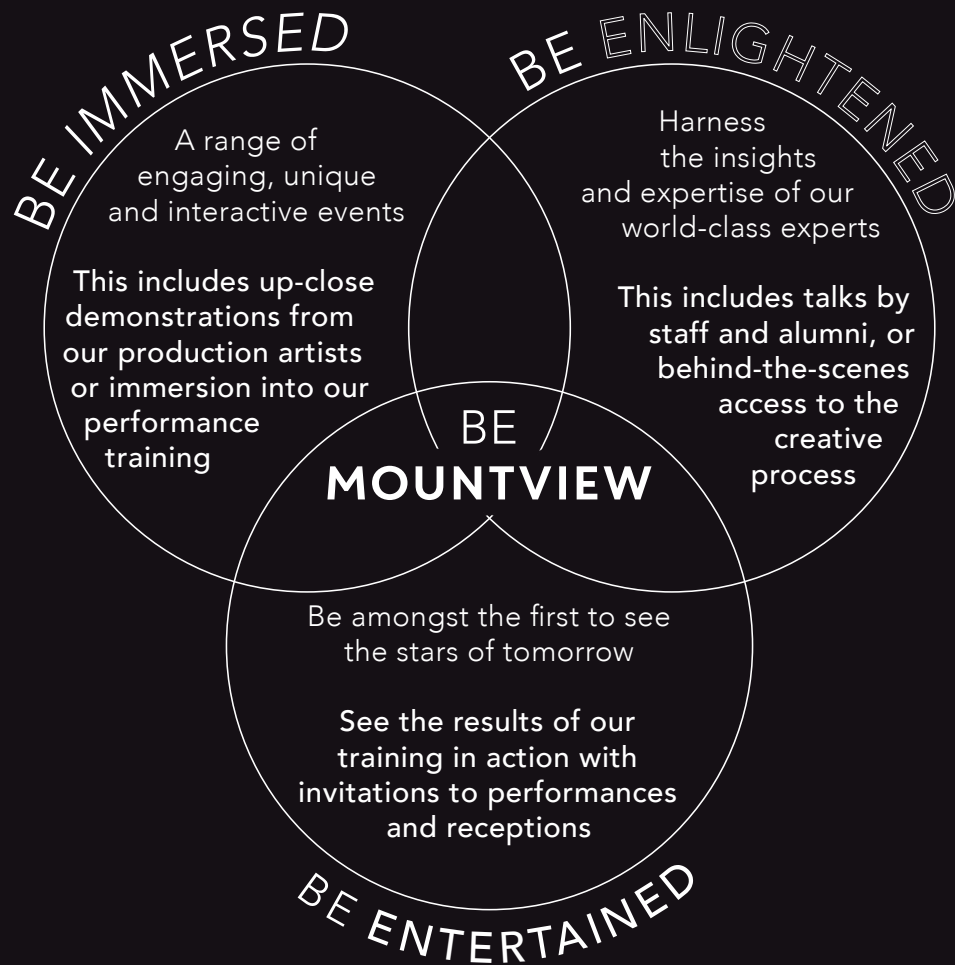
CHARLIE HEPTINSTALL

BA (Hons) Performance - Acting 2020
As seen in *Doctors* (BBC One)



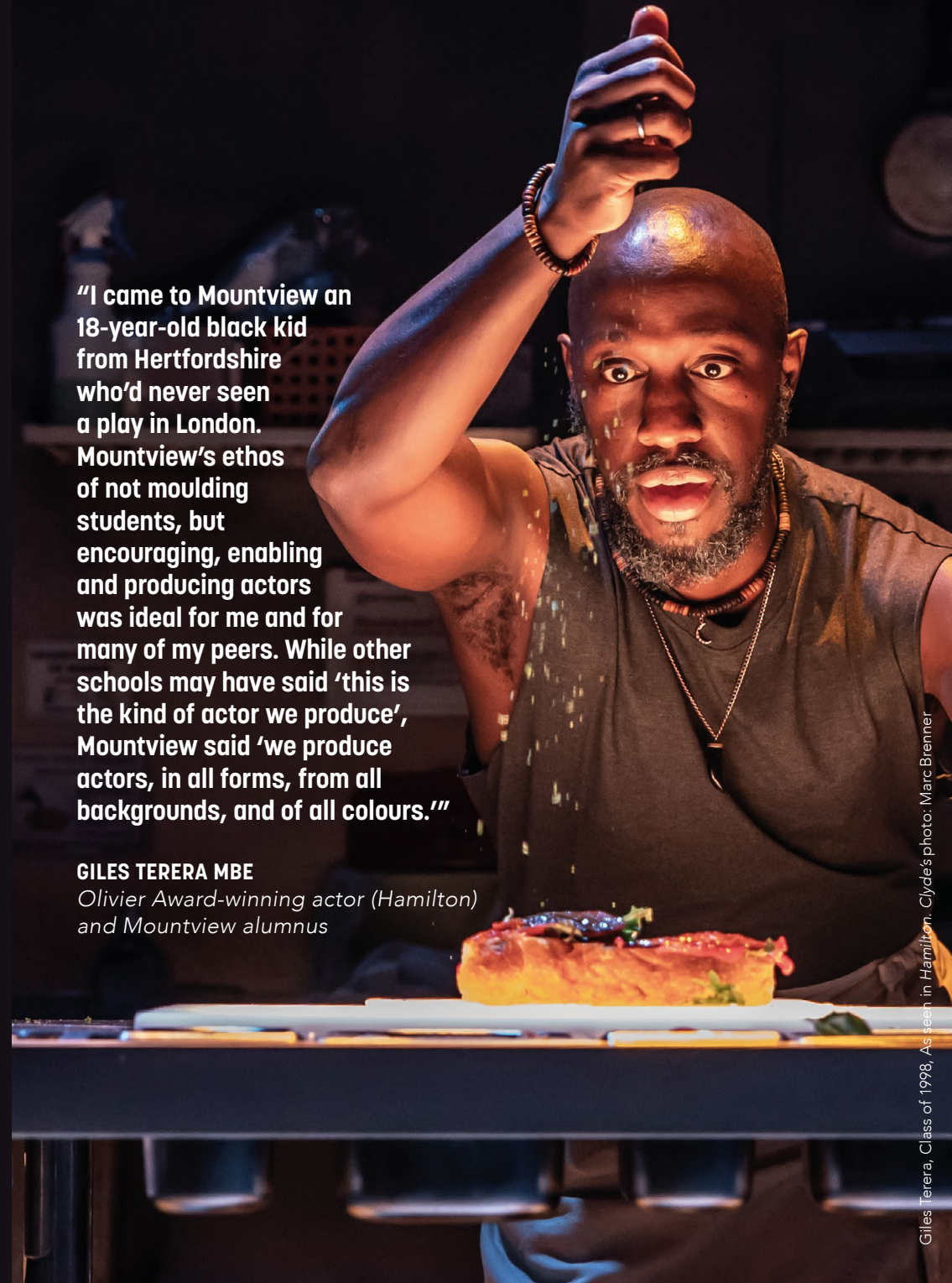
BE MOUNTVIEW

Become a Patron and experience Mountview in a whole new light. Events and activities will change year-on-year, each offering an authentic Mountview experience, and will be programmed around the following themes:

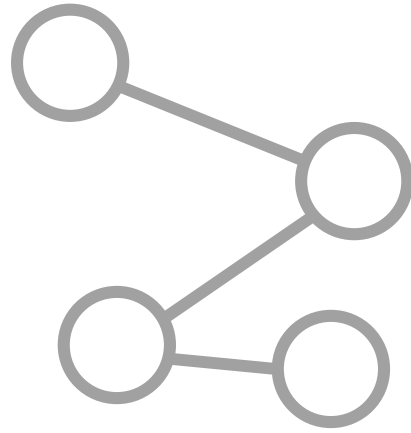


"I came to Mountview an 18-year-old black kid from Hertfordshire who'd never seen a play in London. Mountview's ethos of not moulding students, but encouraging, enabling and producing actors was ideal for me and for many of my peers. While other schools may have said 'this is the kind of actor we produce', Mountview said 'we produce actors, in all forms, from all backgrounds, and of all colours.'"

GILES TERERA MBE
Olivier Award-winning actor (Hamilton) and Mountview alumnus



Giles Terera, Class of 1998. As seen in *Hamilton*. Clyde's photo: Marc Brenner



CONCEPT CIRCLE

£1,000 per year*

Be the spark of creativity

As a thank you for your support you will receive:

- An invitation to Be Entertained
- An Invitation to Be Immersed or Be Enlightened
- Termly Supporter Newsletter
- Annual Impact Report, showing how your support has made a difference
- Crediting on our website

*Benefit value £125, suggested donation £875



SCRIPT CIRCLE

£2,500 per year*

Be part of the narrative

As a thank you for your support you will receive:

- An invitation to Be Entertained
- An Invitation to Be Immersed
- An Invitation to Be Enlightened
- Termly Supporter Newsletter
- Annual Impact Report, showing how your support has made a difference
- Crediting on our website and on our Donor Board at Mountview

*Benefit value £165, suggested donation £2,335



REHEARSAL CIRCLE

£5,000 per year*

Be in the room where it happens

As a thank you for your support you will receive **all the benefits at Script Circle** plus:

- An invitation to sit in on a rehearsal for a Mountview show with the opportunity to meet the cast
- An invitation to an annual dinner hosted by Mountview's Principal and special guests[†]

*Benefit value £225, suggested donation £4,775 †Additional costs may apply



PRODUCTION CIRCLE

£10,000 per year*

Be centre stage

As a thank you for your support you will receive **all the benefits at Rehearsal Circle** plus:

- A bespoke visit curated around your personal area of interest
- Crediting in Mountview programmes

*Benefit value £310, suggested donation £9,690

HOW TO JOIN

A - Sign up online via:

One off donation: [Patron Donate - Mountview Academy of Theatre Arts](#)
Direct Debit: edirectdebit.co.uk

OR

B - Complete the attached form and pay by one of the following methods:

i) by bank transfer

Mountview Academy of Theatre Arts
Sort Code: 20-14-58
Account number: 93425347

Please use reference **PATRON** followed by your surname (e.g PATRON SMITH)

ii) by cheque

Made payable to: Mountview Academy of Theatre Arts
Please note that CAF cheques are not accepted for Patrons subscriptions

Completed forms should be posted to:

FAO Laura Gabe
Mountview
120 Peckham Hill Street
London SE15 5JT

THANK YOU

Thank you for joining our Patrons' Programme.

Your support will ensure that we can continue to make Mountview an inclusive, accessible and dynamic place for everyone.

SIGN-UP FORM

Title Name

Address

.....

.....

Postcode E-mail

Your Selected Circle

- Concept Circle £1,000** (Benefit value £125, suggested donation £875)
- Script Circle £2,500** (Benefit value £165, suggested donation £2,335)
- Rehearsal Circle £5,000** (Benefit value £225, suggested donation £4,775)
- Production Circle £10,000** (Benefit value £310, suggested donation £9,690)

CREDITING

Please specify the name(s) by which you wish to be credited:

.....

- I/We would like to remain anonymous
- I would like to opt out of the suggested donation

YOUR DATA

Mountview will use the data provided to administer and deliver your subscription to the Patrons' Programme. This includes updates via email to provide you with the benefits detailed, as well as other information that Mountview believes is relevant to your Patrons' subscription. These may include, from time to time, invitations to fundraising and other events, details of our general activities and information on other opportunities to support Mountview. By providing your details you agree to these terms and conditions. For further details on how we use your data, please see our privacy policy: mountview.org.uk/privacy-policy

If you would like to update your details, change the information you receive or have any questions, please contact development@mountview.org.uk

*The donation component of the Concept, Script, Rehearsal and Production Circles is voluntary and it is possible to purchase any of these subscriptions without making this donation, at a cost of £125 for the Concept Circle, £165 for the Script Circle, £225 for the Rehearsal Circle and £310 for the Production Circle. If you wish to do this, please contact Laura Gabe at development@mountview.org.uk. As a charity, the voluntary donation makes a vital contribution to our work. Only the donation portion of your subscription is eligible for Gift Aid.

GIFT AID

giftaid it

As a charity (no 274166) Mountview can claim 25p for every £1 donated by UK tax payers who sign up to Gift Aid their donations. Gift Aid is reclaimed by the charity from the tax you pay for the current tax year. Your address is needed to identify you as a current UK taxpayer.

In order to Gift Aid your donation you must tick the box below:

I want to Gift Aid this donation, any donations I make in the future or have made in the past four years to Mountview.

I am a UK taxpayer and understand that if I pay less Income Tax and/or Capital Gains Tax than the amount of Gift Aid claimed on all my donations in that tax year it is my responsibility to pay any difference. I will notify Mountview of any change in my address or circumstances, if I want to cancel this declaration or if I no longer pay sufficient tax on my income and/or capital gains.

Signature Date/...../.....

If you have any further questions, please contact:
Laura Gabe, Senior Development Manager at
development@mountview.org.uk

THANK YOU

"None of my experiences at Mountview would have been possible without my scholarship and I find myself at a loss for words when attempting to explain the extent of my gratitude. I have already made my West End debut and I am even more grateful to Mountview and to my training, now that I can truly see how well they prepare students for professional life. I am living the dream."

CHUMISA DORNFORD-MAY

BA (Hons) Performance - Musical Theatre 2023, Elaine Paige Scholar for Musical Theatre Excellence



Chumisa Dornford-May, Class of 2023, As seen in *Evita* at Leicester Curve. Photo: Cesare De Giallo



mountview.org.uk