



CARRIE: THE MUSICAL

MUSIC BY MICHAEL GORE | LYRICS BY DEAN PITCHFORD

BOOK BY LAWRENCE D. COHEN

BASED ON THE NOVEL BY STEPHEN KING

PRODUCTION

DIRECTOR

DAN HERD (he/him)

MUSICAL DIRECTOR

LINDSEY MILLER (she/her)

CHOREOGRAPHER

SAM WILSON-FREEMAN (he/him)

SET DESIGNER

NICKY BUNCH (she/her)

COSTUME DESIGNER

KAT STONE (she/her)

LIGHTING DESIGNER

ALEX MUSGRAVE

SOUND DESIGNER

RUSSELL DITCHFIELD

VOICE COACH

ELLEN HARTLEY

ASSISTANT DIRECTOR

NANCY MA (she/her) *

ASSISTANT MUSICAL DIRECTOR

LILY BLUNDELL (she/her) **

PRODUCTION MANAGERS

NAOMI WILDRIDGE (she/her)

CONNIE YIP (she/her)

PRODUCTION ASSISTANT

ARIA WANG (she/her) **

COSTUME SUPERVISOR

KATE PAGE (she/her)

STAGE MANAGER

FRANCESCA WOLFF (she/her) ΔΔ

DEPUTY STAGE MANAGER

TASH WERBLOW (she/her) ΔΔ

ASSISTANT STAGE MANAGERS

MAISIE GLOVER (she/her) Δ

MADISON RANDALL (she/her) Δ

AMELIA ROBINSON (she/her) Δ

DRESSER

LUCY BROWN (she/her)

ASSISTANT PRODUCTION ELECTRICIAN

VALERIE GORIAEVA (she/her) Δ

LIGHTING PROGRAMMER

BILLY HIGHFIELD

LIGHTING OPERATOR

KIERAN LYNN (he/him) Δ

FOLLOW SPOTS

MARCO ONG (he/him) Δ

TRACY YU (she/her) Δ

SOUND 1

LAURA CORDEY

ASSISTANT SOUND 1

ALEX ADSHEAD Δ

SOUND 2

CARLOS QUITUMBO Δ

Continued overleaf

CAST - BA Musical Theatre cohort

This production is double cast. Cast names reflect the themes of the show in order to create an equal billing for our students.

Sat 14 Feb 2:15pm – Prom Cast, 7:15pm – Prayer Cast

Tue 17 Feb, 7:15pm – Prom Cast

Wed 18 Feb, 2:15pm – Prayer Cast, 7:15pm – Prom Cast

Thu 19 Feb, 2:15pm – Prom Cast, 7:15pm – Prayer Cast

Fri 20 Feb, 7:15pm – Prayer Cast

Sat 21 Feb, 2:15pm – Prayer Cast, 7:15pm – Prom Cast

OLIVIA MAE
BAKER (she/her)



Dr Irving · Ms Gardner

IZZY
BULLEN (she/her)



Chris Hargensen
(Prayer Cast) · Crystal
Prescott (Prom Cast)

MAISIE
CAMPBELL-MYATT (she/her)



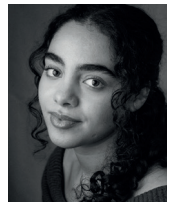
Frieda Gundersen
(Chorus Captain)

VINNIE
COPELAND (he/him)



Billy Nolan

ADRIANA
DA CUNHA (she/her)



Susan Snell (Prom
Cast) · Sue Snell ·
Sydney Boggs (Prayer
Cast)

JAMIE
DAVIS-FLETCHER (he/him)



Freddy Levenstein
(Dance Captain)

JÚLIA
GARRIDO (she/her)



Carrie White (Prayer
Cast) · Kathleen
Stratford (Prom Cast)

SAM
GERLACK (he/him)



George Finch

DAISY
HARRISON (she/her)



Carrie White (Prom Cast)
· Kathleen Stratford
(Prayer Cast)

OWEN
HATCH (he/they)



Tommy Ross
(Prayer Cast) · Teddy
Ostreicher (Prom Cast)

HREFNA
HLYNSDÓTTIR (she/her)



Warden Piper ·
Margaret White

ELLIE
HUMBERSTONE (she/her)



Susan Snell (Prayer Cast)
· Sue Snell · Sydney
Boggs (Prom Cast)

ELARA
KIRTLAND (she/her)



Norma Allen
(Dance Captain)

TJ
MATARA-HOLLOWAY (he/they) FIN
TOMLINSON (he/him)

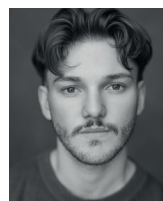


Kevin Stokes
(Chorus Captain)



Tommy Ross
(Prom Cast) ·
Teddy Ostreicher
(Prayer Cast)

JOHN JAMES
VERNON (he/him)



Dr Katt · Mr Stephens

LOU
VOGEL (she/her)



Chris Hargensen
(Prom Cast) · Crystal
Prescott (Prayer Cast)

For any information about our students, please contact Industry Liaison Manager Neil Rutherford on neilrutherford@mountview.org.uk

SOUND 3

HAZEL ERSKINE (they/them) ^Δ

MANA NAKAGAWA (she/her) ^Δ

TECHNICIAN (STAGE)

JOE JARDIM (he/him)

SCENIC CONSTRUCTION MANAGER

HANNAH SMITH (she/her)

SCENIC ART MANAGER

STEVEN PETERS (he/him)

PROP MAKER AND SCENIC ARTIST

JIMMY WILKES (he/him)

PROP MAKERS

JANELLE BENJAMIN (she/her) ^Δ

MAISIE GLOVER (she/her) ^Δ

SCENIC ARTISTS

DARA BROADBERRY (he/him) ^Δ

ALEX HOLL (she/her)

FIT-UP CREW

FINLEY GOULTER (he/him) ^Δ

BEKE LANGANKE (she/her) ^{ΔΔ}

WINNIE WANG (she/her) ^Δ

BAND

MD/CONDUCTOR/KEYS 1 LINDSEY MILLER

ASSISTANT MD/KEYS 2 LILY BLUNDELL **

CELLO JOE KEENAN

GUITAR 1 DANIEL KEMSELL

GUITAR 2 ROLAND PALMER

BASS GUITAR JESS MARTIN

DRUMS/PERCUSSION CALIE HOUGH

* MFA Creative Practice - Directing student

.. MA Music Direction student

** MFA Creative Practice - Producing student

ΔΔ PG Dip Stage and Production Management student

Δ FdA Technical Production/Stage Management student

THANKS TO

AUTOGRAPH SOUND LTD

ENYONAM ANSAH

HOPE DAWE

MARIA GARRETT

EVE HUMPHREY

YALI MARGALITH

TIMO TATZBER

THIS PRODUCTION FEATURES STROBE AND FLASHING LIGHTS, SEXUAL REFERENCES, SCENES OF A SEXUAL NATURE, THREAT, MASS SCHOOL VIOLENCE, BLOOD, SUICIDE, ANIMAL CRUELTY, REFERENCES TO SEXUAL VIOLENCE AND SEXUAL ASSAULT, PARENTAL ABUSE, REFERENCES TO INFANTICIDE, RELIGIOUS DISCRIMINATION, BULLYING, HOMOPHOBIA, PUBLIC HUMILIATION AND STRONG LANGUAGE.

This amateur production of CARRIE THE MUSICAL is presented by arrangement with Concord Theatricals Ltd.
www.concordtheatricals.co.uk

Photography and filming of this production is strictly prohibited.

BIOGRAPHIES

DAN HERD *Director*

Dan is Head of Public Performance at Mountview. As a director, he worked at The Old Vic, Lyric Hammersmith, Regent's Park Open Air Theatre, Theatre Royal Haymarket, Soho Theatre, Theatre503, the Edinburgh Fringe Festival, at Smock Alley Theatre, Samuel Beckett Theatre and Project Arts Centre (Dublin) and at both the Public Theater and 59E59 (Off-Broadway). For Mountview: *9 to 5*, *Disney's The Little Mermaid*, *Romeo and Juliet*, *Alice in Wonderland*, *The Wolves*, *King Lear*, *Hamlet*, *Boy*, *Six Characters in Search of an Author* and *Legally Blonde*.

LINDSEY MILLER *Musical Director*

Lindsey trained at Royal Conservatoire of Scotland. Her credits include: *Twelfth Night*, *Julius Caesar*, *Henry VI: Rebellion*, *Henry VI: Wars of The Roses*, *Much Ado About Nothing: The Merry War*, *The Taming of the Shrew*, *Measure for Measure*, *As You Like It* (all RSC), *Much Ado About Nothing* (National Theatre), *Dance* (King's Head), *SIX the Musical* (UK tour/Arts), *Fame: 20th Anniversary* (UK tour), *Tommy* (Prince Edward), *The Blues Brothers: Live!* (Arts) and National Ballet: *Choreographics* (Barbican).

SAM WILSON-FREEMAN *Choreographer*

Sam's credits include: Associate Choreographer for *Disney's Freaky Friday* (Manchester HOME), Resident Director for *& Juliet* (UK tour), Resident Director for *Bring It On* (London), Associate Choreographer for *To Wong Foo: The Musical* (Hope Mill Theatre), Assistant Choreographer for *Pop Icons* (Marella Cruises) and Choreographer for *West End Does* (Carnegie Hall). Performance credits include: *Mrs Doubtfire* (West End/Manchester), *Annie* and *Flashdance* (UK tours), *At Last It's Summer* (London Palladium), *The MTV EMAS*, *The BRIT Awards*, *The X Factor* and *Britain's Got Talent*.

NICKY BUNCH *Set Designer*

Nicky trained at CSSD. She has designed extensively for leading UK Drama Schools. Previous Design credits include: *A Christmas Carol* (Reading Rep), *Potted Panto* (costumes) (West End), *Outside Voice* (Soho Poly), *Tuck Everlasting* (Birmingham Hippodrome Studio, NYMT), *Frankenstein* (UK tour), *The New Musketeers* (costumes) (Trinity Theatre), *Egusi Soup* (Bury St Edmunds/UK tour), *Fragile* (Coventry Belgrade), *Shiverman* (Theatre 503), *When Did You Last See My Mother* (Trafalgar Studios 2) and *Guys and Dolls* (Cambridge Arts Theatre). nickybunch.co.uk

KAT STONE *Costume Designer*

Kat studied costume design at Wimbledon College of Art. Before Mountview she worked at the Royal Opera House in the costume department and has over 10 years' experience in a variety of costume roles in wardrobe hire, ballet, opera, musicals, plays and film. She designed the costumes for *Against* (Mountview) and has been a costume supervisor at Mountview since May 2023. Credits include: *Next to Normal*, *Curtains*, *Charlie and the Chocolate Factory*, *Spring Awakening* and *She Loves Me*.

ALEX MUSGRAVE *Lighting Designer*

Alex designs lighting for theatre and opera across the UK and Internationally. Most notably *The Forsyte Saga – Part 1 & 2* (Swan Theatre – RSC), *Home* at Chichester Festival Theatre, *Figaro the Musical* (London Palladium) and *The White Factory* (Marylebone Theatre). Alex has been nominated for two Offie Awards for Best Lighting Design. Other venues include Soho Playhouse – New York, Wolly Mammoth Theatre – Washington DC, The Salisbury Playhouse, The Lowry – Salford and the Birmingham Hippodrome.

RUSSELL DITCHFIELD *Sound Designer*

Russell is a composer and sound designer from Lancashire. His credits include: *Last Quiz Night on Earth* (New Vic), *Sleeping Beauty* (Storyhouse), *The History Boys* (UK tour), *Brassed Off* (Theatre by the Lake), *Brief Encounter*, *No Pay? No Way!* and *Beginning* (Royal Exchange), *Nuclear Children* (Pleasance Edinburgh), *Faustus: That Damned Woman* (Storyhouse), *Under Milk Wood* (Sherman Theatre), *Sorter* (Swansea Grand), *Edith* (The Lowry), *Lysistrata* (Lyric Hammersmith), *Groan Ups* (Vaudeville West End/UK tour). Russell's compositions have also been played on BBC Radio 1, 2 and 6 Music.



Accredited School