



**MOUNTVIEW**

# COME FROM AWAY

## BOOK, MUSIC AND LYRICS

## BY IRENE SANKOFF AND DAVID HEIN

BACKSTAGE THEATRE

7-14 MAR 2026

DURATION

1 HOUR 40 MINUTES (no interval)

### PRODUCTION

DIRECTOR

SHERRILL GOW

MUSICAL DIRECTOR

NICHOLAS CHAVE

CHOREOGRAPHER

TINOVIMBANASHE SIBANDA

SET AND COSTUME DESIGNER

NICKY BUNCH

LIGHTING DESIGNER

ALEX MUSGRAVE

SOUND DESIGNER

MATTHEW GILES

INTIMACY DIRECTOR

RUTH NAYLOR-SMITH

VOICE COACH

JESS HAMMETT

ASSISTANT DIRECTOR

MILLIE KOPLICK \*

ASSISTANT MUSICAL DIRECTOR

JOE ASH \*\*

PRODUCTION MANAGER

CONNIE YIP (she/her)

PRODUCTION ASSISTANT

FLEUR SIMPSON \*\*

COSTUME SUPERVISOR

NAOMI SAMODAI-WRIGHT

STAGE MANAGER

ABBIE GRIMES ΔΔ

DEPUTY STAGE MANAGER

NEVE WATTS ΔΔ

ASSISTANT STAGE MANAGERS

DARA BROADBERRY Δ

HATTIE PILLING Δ

PRODUCTION ELECTRICIAN

JOE LOFTHOUSE Δ

LIGHTING PROGRAMMER

ED MORLEY Δ

PRODUCTION SOUND ENGINEER

MIMI STOREY Δ

ASSISTANT PRODUCTION SOUND ENGINEER

MANA NAKAGAWA Δ

LIGHTING OPERATOR

MARCO ONG Δ

FOLLOWSPOT OPERATOR

WINNIE WANG Δ

SOUND OPERATOR

LAURA CORDEY

SOUND 2 MENTOR

CARLOS QUITUMBO Δ

SOUND 2

KAYLA WARHAM Δ

SOUND 3

TRACY YU Δ

Continued overleaf

### CAST - BA Musical Theatre cohort

JOEL-CHARLES ANDERSON (he/him)



Terry · President Bush · Multiple Roles

TOM AUBREY (he/him)



Claude · Eddie · Multiple Roles

SÈYÍ AWE (he/him)



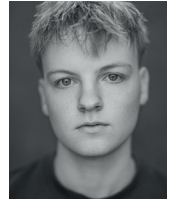
Bob · Muhumza · Multiple Roles

ADAM BLAKEMORE (he/him)



Derm · Multiple Roles

OWEN BRADLEY (he/him)



Joey · Multiple Roles

MARCUS CARR (he/him)



Doug · Captain Bristol · Multiple Roles

JOSHUA CONBOY (he/him)



Kevin J · Robin · Multiple Roles

JADE D'CRUZE (she/her)



Beulah · Multiple Roles (Intimacy Captain)

CAIT DU FEU (she/her)



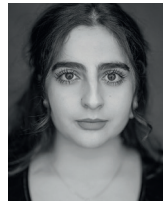
Bonnie · Multiple Roles (Chorus Captain)

BETH GARCIA (she/her)



Annette · Multiple Roles

SARA HAJIZADEH (she/her)



Aliyah · Crystal · Multiple Roles

JESSICA IBADIN (she/her)



Hannah · Margie · Multiple Roles (Dance Captain)

MAXIMUS MAWLE (he/him)



Micky · Brenda's Brother · Multiple Roles (Chorus Captain)

TOBY MENCHACA HURLEY (he/him)



Nick · Multiple Roles

GRACIE O'BRIEN (she/her)



Beverly Bass (Timmy's Cast) · Martha · Delores · Multiple Roles (Shoppers Cast)

ISAAC REAL (he/him)



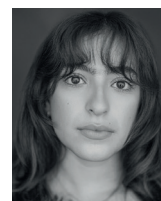
Dwight · Cardiologist · Multiple Roles

NOAH SCOTT (he/him)



Oz · Rabbi · Multiple Roles

MIA SHAH (she/her)



Diane · Brenda · Multiple Roles

SEBASTIAN SMALLWOOD (he/him)



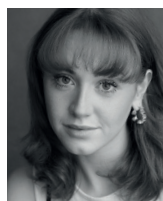
Kevin T · Multiple Roles (Dance Captain)

MILLIE TAVERNOR (she/her)



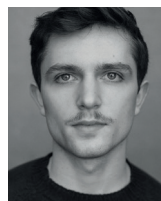
Janice · Flight Attendant · Multiple Roles

EMMA WILBY (she/her)



Beverly Bass (Shopper's Cast) Martha · Delores · Multiple Roles (Timmy's Cast)

JOE ZUURBIER (he/him)



Garth · Matty · Multiple Roles

This production is double cast. Cast names reflect the themes of the show in order to create an equal billing for our students.

Sat 7 Mar 2:15pm – Shoppers Cast, 7:15pm – Timmys Cast

Tue 10 Mar, 7:15pm – Shoppers Cast

Wed 11 Mar, 2:15pm – Shoppers Cast, 7:15pm – Shoppers Cast

Thu 12 Mar, 2:15pm – Shoppers Cast, 7:15pm – Timmys Cast

Fri 13 Mar, 7:15pm – Timmys Cast

Sat 14 Mar, 2:15pm – Timmys Cast, 7:15pm – Shoppers Cast

For any information about our students, please contact Industry Liaison Manager Neil Rutherford on [neilrutherford@mountview.org.uk](mailto:neilrutherford@mountview.org.uk)

## SCENIC CONSTRUCTION MANAGER

HANNAH SMITH (she/her)

## SCENIC ART MANAGER

STEVEN PETERS (he/him)

## SCENIC ARTISTS / PROP MAKERS

DARA BROADBERRY Δ

LUCY BROWN Δ

FINLEY GOULTER Δ

LIV POWELL Δ

GRAY VIBERT Δ

JIMMY WILKES (he/him)

## BAND

### MD/CONDUCTOR/KEYS 1/ACCORDION

NICHOLAS CHAVE

### ASSISTANT MD/KEYS 2/BODHRÁN JOE ASH

FIDDLE JADE CUTHBERT

### WHISTLES/FLUTES/PIPES PHILIPPE BARNES

### MANDOLINS/BOUZOUKI/GUITAR

JOHN GREGSON

### GUITARS CURTIS VOLP

### DRUMS/PERCUSSION PHIL JACK

\* MFA Creative Practice - Directing student

~ MA Music Direction student

\*\* MFA Creative Practice - Producing student

ΔΔ PG Dip Stage and Production Management student

Δ FdA Technical Production/Stage Management student

## THANKS TO

THE RED BULL

ROSE BRUFORD COLLEGE

ROYAL ACADEMY OF DRAMATIC ART

THE YOUNG VIC THEATRE

THIS PRODUCTION FEATURES THEMES OF 9/11, GRIEF AND BEREAVEMENT, RACISM/ ISLAMOPHOBIA AND MILD SWEARING.

This amateur production is presented by arrangement with Music Theatre International. All authorised performance materials are also supplied by MTI. [www.mtishows.co.uk](http://www.mtishows.co.uk)

Photography and filming of this production is strictly prohibited.

## BIOGRAPHIES

### SHERRILL GOW *Director*

Sherrill is Director of Learning & Teaching at Mountview, and a Canadian delighted to be directing *Come From Away*. Previous directing credits at Mountview include *Spring Awakening*, *The Penelopiad*, *Pippin* and *Anne of Green Gables*. Sherrill holds a PhD from Royal Central School of Speech and Drama, where her research focused on feminisms, musical theatre and performer training. Her publications include *Reconsidering the Link between Text, Technique and Teaching in Actor Training* (Routledge, 2024) and *Queering Brechtian Feminism: Breaking down gender binaries in musical theatre pedagogical performance practices* (Studies in Musical Theatre, 2018).

### NICHOLAS CHAVE *Musical Director*

Nicholas is Joint Head of Music and Course Leader for the world first BMus Piano for Theatre course at Mountview. Musical direction credits for Mountview include: *Spring Awakening*, *The Wonderful Wizard of Oz*, *Disney's The Little Mermaid*, *Carrie*, and *Dogfight*. He has been Musical Supervisor for the annual pantomime at BEAM (previously Hertford Theatre) for over seven years with shows including *The Snow Queen*, and *The Astonishing Adventures of Pinocchio*, and has been Musical Director for multiple productions with the National Youth Music Theatre, including *Into the Woods* (Southwark Playhouse/Elephant) and this year's 50th Anniversary production of *The Ragged Child* (Rose Theatre, Kingston). Nicholas trained at Trinity Laban and Mountview.

### TINOVIMBANASHE SIBANDA *Choreographer*

With a practice rooted in collaboration, curiosity and care, Tinobanashe views movement as a universal language and is dedicated to creating space for artists of all backgrounds to engage meaningfully on the creative process. Her work has been showcased across the UK, including at Leeds Playhouse, The Other Palace, Southwark Playhouse and an opera debut at Santa Fe Opera, last year. Current projects include *Ballad Lines* (Southark Playhouse).

### NICKY BUNCH *Set and Costume Designer*

Nicky trained at CSSD. She has designed extensively for leading UK Drama Schools. Previous Design credits include: *A Christmas Carol* (Reading Rep), *Potted Panto* (costumes) (West End), *Outside Voice* (Soho Poly), *Tuck Everlasting* (Birmingham Hippodrome Studio, NYMT), *Frankenstein* (UK tour), *The New Musketeers* (costumes) (Trinity Theatre), *Egusi Soup* (Bury St Edmunds/UK tour), *Fragile* (Coventry Belgrade), *Shiverman* (Theatre 503), *When Did You Last See My Mother* (Trafalgar Studios 2) and *Guys and Dolls* (Cambridge Arts Theatre). [nickybunch.co.uk](http://nickybunch.co.uk)

### ALEX MUSGRAVE *Lighting Designer*

Alex designs lighting for theatre and opera across the UK and Internationally. Most notably *The Forsythe Saga – Part 1 & 2* (Swan Theatre – RSC), *Home* at Chichester Festival Theatre, *Figaro the Musical* (London Palladium) and *The White Factory* (Marylebone Theatre). Alex has been nominated for two Offie Awards for Best Lighting Design. Other venues include Soho Playhouse – New York, Wolly Mammoth Theatre – Washington DC, The Salisbury Playhouse, The Lowry – Salford and the Birmingham Hippodrome.

### MATTHEW GILES *Sound Designer*

Previous sound design credits include: *The Last Five Years* (Reading Rep/Barn Theatre/Bath Theatre Royal/Buxton Opera House), *Cry Baby* (Arcola Theatre), Associate Designer: *Aladdin* (Assembly Hall Theatre/Hartlepool Town Hall Theatre), *Spring Awakening*, *The UN Inspector*, *Curtains*, *Head Over Heels*, *Into The Woods*, *Urinetown*, *9 to 5*, *Serious Money*, *Dance Nation*, *Made in Dagenham*, *Smile*, *Legally Blonde*, *The Beau Defeated*, *The Roaring Girl*, *Alice in Wonderland* (Mountview), *Girlhood* and *Rent* (Edinburgh Fringe Festival), *Alarms and Excursion* (Greenwich Theatre), *West End in Blackpool* (The Empress Ballroom), *Burlesque'd Live* (The Turbine Theatre), *And Then There Were None* (Dixon Studio).



Accredited School