



MOUNTVIEW

STEEL PIER

BOOK BY DAVID THOMPSON

MUSIC AND LYRICS BY JOHN KANDER AND FRED EBB

CONCEIVED BY SCOTT ELLIS, SUSAN STROMAN AND DAVID THOMPSON

THE MACK THEATRE

2-9 MAY 2026

DURATION

2 HOURS 30 MINUTES (incl. a 20-min interval)

CAST - BA Musical Theatre students

JOEL-CHARLES ANDERSON (he/him)



Contestant · Ensemble (Fight Captain)

TOM AUBREY (he/him)



Mick Hamilton (Foxtrot Cast) · Contestant · Ensemble (Waltz Cast)

OLIVIA MAE BAKER (she/her)



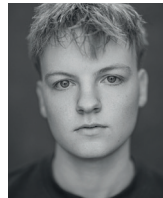
Contestant · Ensemble (Dance Captain)

ADAM BLAKEMORE (he/him)



Dom Misiano · Ensemble (Dance Captain)

OWEN BRADLEY (he/him)



Contestant · Ensemble

IZZY BULLEN (she/her)



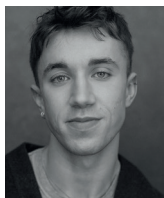
Shelby Stevens (Waltz Cast) · Contestant & Ensemble (Foxtrot Cast)

MAISIE CAMPBELL-MYATT (she/her)



Shelby Stevens (Foxtrot Cast) Contestant & Ensemble (Waltz Cast)

MARCUS CARR (he/him)



Happy McGuire (Foxtrot Cast) · Contestant · Ensemble (Waltz Cast)

JOSHUA CONBOY (he/him)



Buddy Becker (Waltz Cast) · Contestant · Ensemble (Foxtrot Cast) (Chorus Captain)

JADE D'CRUZE (she/her)



Mick's Pick · Ensemble

ADRIANA DA CUNHA (she/her)



Mick's Pick · Ensemble

JAMIE DAVIS-FLETCHER (he/him)



Jonny Adel · Ensemble

CAIT DU FEU (she/her)



Rita Racine (Foxtrot Cast) · Contestant · Ensemble (Waltz Cast)

BETH GARCIA (she/her)



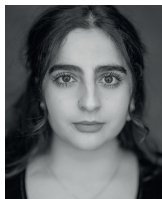
Dora Foster · Ensemble (Chorus Captain)

SAM GERLACK (he/him)



Mr. Walker · Ensemble

SARA HAJIZADEH (she/her)



Precious McGuire (Waltz Cast) · Contestant · Ensemble (Foxtrot Cast)

DAISY HARRISON (she/her)



Hannah Misiano · Ensemble

OWEN HATCH (he/they)



Contestant · Ensemble

ELLIE HUMBERSTONE (she/her)



Mick's Pick · Ensemble

JESSICA IBADIN (she/her)



Contestant · Ensemble (Intimacy Captain)

ELARA KIRTLAND (she/her)



Bette Becker (Foxtrot Cast) · Contestant · Ensemble (Waltz Cast)

TJ MATARA-HOLLOWAY (he/they)



Luke Adams · Ensemble

TOBY MENCHACA HURLEY (he/him)



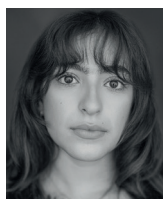
Buddy Becker (Foxtrot Cast) · Contestant · Ensemble (Waltz Cast) (Dance Captain)

ISAAC REAL (he/him)



Contestant · Ensemble

MIA SHAH (she/her)



Contestant · Ensemble

SEBASTIAN SMALLWOOD (he/him)



Sonny · Contestant · Ensemble

MILLIE TAVERNER (she/her)



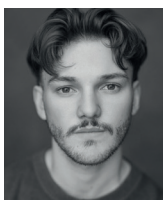
Rita Racine (Waltz Cast) · Contestant · Ensemble (Foxtrot Cast)

FIN TOMLINSON (he/him)



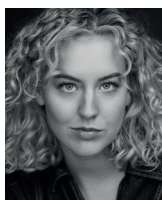
Mick Hamilton (Waltz Cast) · Contestant · Ensemble (Foxtrot Cast)

JOHN JAMES VERNON (he/him)



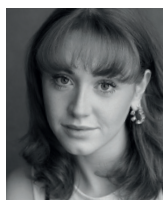
Happy McGuire (Waltz Cast) · Contestant · Ensemble (Foxtrot Cast)

LOU VOGEL (she/her)



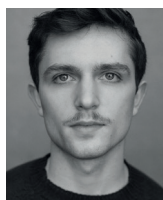
Precious McGuire (Foxtrot Cast) · Contestant · Ensemble (Waltz Cast)

EMMA WILBY (she/her)



Bette Becker (Waltz Cast) · Contestant · Ensemble (Foxtrot Cast)

JOE ZUURBIER (he/him)



Bill Kelly

THIS PRODUCTION IS DOUBLE CAST

Sat 2 May, 2:30pm – Foxtrot cast

Sat 2 May, 7:30pm – Waltz cast

Tue 5 May, 7:30pm – Foxtrot cast

Wed 6 May, 2:30pm – Waltz cast

Wed 6 May, 7:30pm – Foxtrot cast

Thu 7 May, 2:30pm – Foxtrot cast

Thu 7 May, 7:30pm – Waltz cast

Fri 8 May, 7:30pm – Waltz cast

Sat 9 May, 2:30pm – Waltz cast

Sat 9 May, 7:30pm – Foxtrot cast

For any information about our students, please contact Industry Liaison Manager Neil Rutherford on neiltrutherford@mountview.org.uk

BAND

MD / CONDUCTOR / KEYS 1 MARTIN LEBERMAN

ASSISTANT MD / KEYS 2 ISOBEL CONNOLLY **

KEYS 3 AJ HILL **

BASS WILL HENDERSON

DRUMS LIAM ROBERTS

VIOLIN MARIE ANNE BRUCCHERI

REED 1 BECKY HUGHES

REED 2 ALEX DANI

TRUMPET 1 SAM DAVIES

TRUMPET 2 MIA PLUMMER

TROMBONE NIC JONES

PRODUCTION

DIRECTOR AND CHOREOGRAPHER
CRESSIDA CARRÉ

MUSICAL DIRECTOR
MARTIN LEBERMAN

SET & COSTUME DESIGNER
STEWART J CHARLESWORTH

LIGHTING DESIGNER
ADAM KING

SOUND DESIGNER
MATTHEW GILES

FIGHT CHOREOGRAPHER
MARCELLO MARASCALCHI

VOICE COACH
JENRU WANG

ASSISTANT DIRECTOR
NANCY MA *
MILLIE KOPLICK *

ASSISTANT MUSICAL DIRECTOR
ISOBEL CONNOLLY **

PRODUCTION MANAGER
TIFFANY LEDESMA

ASSISTANT PRODUCTION MANAGER
NEVE WATTS ΔΔ

PRODUCTION ASSISTANT
ALICE FENTON °

COSTUME SUPERVISOR
KAT STONE

DRESSER
LIV POWELL Δ

STAGE MANAGER
MOLLY NICE (she/her) Δ

DEPUTY STAGE MANAGER
RUBY ORRIN (they/them) Δ

ASSISTANT STAGE MANAGERS
FINLEY GOULTER (he/him) Δ
HATTIE PILLING (she/her) Δ
WINNIE WANG (she/her) Δ

PRODUCTION ELECTRICIAN
EDWARD MORLEY (he/him) Δ

PRODUCTION SOUND ENGINEER
OLLIE BRENNAN

LIGHTING PROGRAMMER
JONATHAN WING

LIGHTING OPERATOR
HAZEL ERSKINE Δ

FOLLOW SPOTS
MANA NAKAGAWA Δ
TRACY YU Δ

SOUND 1
WAYNE HARRIS

SOUND 2
ALEX DUCKWORTH

SOUND 3
KIERAN LYNN Δ

SOUND 4
GENELLE SELLARS

SCENIC CONSTRUCTION MANAGER
HANNAH SMITH

SCENIC ART MANAGER
STEVEN PETERS (he/him) Δ

LEAD SCENIC ARTIST / PROP MAKER
JAMES WILKES

SCENIC ARTISTS / PROP MAKERS
MAISIE GLOVER Δ
NEVE WATTS ΔΔ
MADISON RANDALL Δ
JAMES COX Δ

PRODUCTION TEAM
JORGE CLARKSON
JOSEPH JARDIM
STUART GLOVER
PAUL LESLIE
GARETH MORGAN

* MA/MFA Creative Practice -
Directing student

** MA/MFA Music Direction student
Δ Dip/FdA/BA Theatre Production
Arts student

ΔΔ PG Dip Stage and Production
Management student

° MA/ MFA Creative Practice -
Producing student

THANKS TO
AUTOGRAPH SOUND LTD
THE KILN THEATRE
ROYAL ACADEMY OF DRAMATIC ARTS

THIS PRODUCTION FEATURES
STROBE LIGHTING, SCENES OF A
SEXUAL NATURE, SEXUAL ASSAULT,
PHYSICAL VIOLENCE, A GUN PROP
AND GUN SHOT.

This amateur production of STEEL
PIER is presented by arrangement
with Concord Theatricals Ltd. www.
concordtheatricals.co.uk

Photography and filming of this
production is strictly prohibited.

The videotaping or making of
electronic or other audio and/or
visual recordings or streams of this
production is strictly prohibited, and
is an offence under the Copyright,
Designs and Patents Act 1988.

BIOGRAPHIES

CRESSIDA CARRÉ *Director and Choreographer*

Cressida's credits include: *Miss Saigon* (Gothenburg Opera House, Sweden), *Jesus Christ Superstar* and *Miss Saigon* (Folketeateret, Oslo), *Sunday in the Park with George* and *Sweet Charity* (Mountview), *From Here to Eternity*, *Zorro* and *Violet* (Charing Cross), *Titanic* (UK/ International tour), *SIX* (Arts Theatre), *Avenue Q* and *Spring Awakening* (UK tours), *The Wild Party* (GSA), *The Wizard of Oz* (Blackpool Winter Gardens), *Promises*, *Promises* (Southwark Playhouse), *Posh* (Pleasance), *Sweeney Todd* (Colchester Mercury/Derby), *Jersey Boys* (International tour), *A Chorus Line* (Burke St Theatre, Brisbane), *The Jungle Book* (Citizen's Theatre, Glasgow), *The Star* (Liverpool Playhouse), *Pippi Longstocking* (Royal & Derngate), *Beyond the Fence* (Arts Theatre) and *Britain's Got Bhangra* (Watford Palace/UK tour)

MARTIN LEBERMAN *Musical Director*

Martin's studies began in 1970 with Eric Gilder, followed by full time undergraduate and postgraduate study at Trinity College of Music under the tutelage of Anthony Lindsay and Simon Young. In addition to extensive performance credits as recital accompanist and orchestral pianist on a multitude of West End productions. Martin has also served as Musical Director for Cameron Mackintosh, The Really Useful Group, Qdos, Noel Gay Management, Cole Kitchenn, Watermill Theatre, Leicester Haymarket Theatre and Mountview. As Composer for theatre (*Improbable Tales*, *Notebook of Trigoran*, *Art of War*), concert work (*Song of Songs*, *Galapagos*, *Preludes*, *The Hart*) and dance (*Street Song*), current compositional focus rests upon the re-telling of folk literature of Eastern Europe and the diaspora.

STEWART J CHARLESWORTH *Set & Costume Designer*

Stewart's credits include: *The Book of Mormon* (Scenekvelder, Norway), *Falstaff* (Malta National Opera), *Tick, Tick... BOOM!* (The Bridge Theatre, Brussels), *Pinocchio*, *Mama Goose* (Theatre Royal Stratford East), *Robin Hood* (Cheltenham Everyman), *Bugsy Malone* (Watford Palace

Theatre), *Something Rotten*, *Sister Act* (English Theatre Frankfurt), *Dead on Time* (Belmond Pullman), *The Paddington Bear Experience* (London), *Claus* (The Lowry), *Yes Prime Minister* (Theatre Clywd), *Audra McDonald* (London Palladium), *The Producers* (Asia tour), *For Tonight* (Adelphi), *From Here to Eternity* (Charing Cross Theatre), *The Ballad of Thamesmead* (GDIF/Dante or Die), *The Dark* (UK tour), *Carousel* (Arcola), *Dusty* (P&O Cruises), *Le Roi de Lahore* (international Opera Award finalist) (Dorset Opera). @stewart_j_charlesworth

ADAM KING *Lighting Designer*

Adam is a Mountview alumni. Since graduating he has gone on to light: *Scissorhandz* (Southwark Elephant), *Stewart Lee vs The Wulf-Man* (UK tour), *The Mountaintop* (Leicester Curve/UK tour), *G* (Royal Court), *Pop off Michelangelo* (Gilded Balloon Big Yin), *Diva Live From Hell* (Underbelly Belly Button), *Fun at the Beach*, *Then, Now and Next* (Southwark Playhouse), *Sappho* (Southwark Elephant), *Legends: The Divas* (UK tour), *Unfortunate: The Untold Story of Ursula the Sea Witch* (Southwark Elephant/UK tour), *Flowers for Mrs Harris* (Riverside Studios), *Annie Get Your Gun* (Lavender Theatre), *We Need New Names* (UK tour), *Gone Too Far* (Theatre Royal Stratford East), *From Here to Eternity* (Charing Cross Theatre) and *Flashdance* (European Tour).

MATTHEW GILES *Sound Designer*

Previous sound design credits include: *The Last Five Years* (Reading Rep/Barn Theatre/Bath Theatre Royal/Buxton Opera House), *Cry Baby* (Arcola Theatre). Associate Designer: *Aladdin* (Assembly Hall Theatre/Hartlepool Town Hall Theatre), *Come From Away*, *Spring Awakening*, *The UN Inspector*, *Curtains*, *Head Over Heels*, *Into The Woods*, *Urinetown, 9 to 5*, *Serious Money*, *Dance Nation*, *Made in Dagenham*, *Smile*, *Legally Blonde*, *The Beau Defeated*, *The Roaring Girl*, *Alice in Wonderland* (Mountview), *Girlhood* and *Rent* (Edinburgh Fringe Festival), *Alarms and Excursion* (Greenwich Theatre), *West End in Blackpool* (The Empress Ballroom), *Burlesque'd Live* (The Turbine Theatre), *And Then There Were None* (Dixon Studio).